



# **METHODS AND DATA COMPARABILITY BOARD**

**Dan Sullivan**  
**USGS co-chair**

# OUTLINE

- ❑ A brief history of the Board
- ❑ Major accomplishments
- ❑ Current projects
- ❑ New projects/Future plans
- ❑ Unfinished business





# HISTORY

- Created in 1997
- Preceded by Interagency Task Force on Monitoring





## WORKGROUPS – PRE-2007

- PBMS
- WQDE
- Biology
- Laboratory Accreditation
- New Technologies
- Nutrients
- DQO/MQO
- NEMI





# ACCOMPLISHMENTS

- General

- AWRA IMPACT (2003)

- PBMS

- Reservoir Dogs journal article
- Technical report No. 2 (2001)





## ACCOMPLISHMENTS (CONT.)

- Laboratory accreditation
  - White paper and fact sheet (2003)



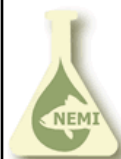
# ACCOMPLISHMENTS (CONT.)

## Water Quality Data Elements: A User Guide

- Water Quality Data Elements
  - Technical Report No. 3 (2006)
  - Habitat (ACWI 2008)



# ACCOMPLISHMENTS (CONT.)



# NEMI

National Environmental Methods Index



▶ Browse all Methods in NEMI

What's New

▶ Go to MyNEMI (Requires Login)

## General Information

- ▶ Green Chemistry
- ▶ Background
- ▶ Disclaimer
- ▶ Send us Feedback

## Quick Links

- ▶ ACWI
- ▶ NWQMC
- ▶ MDCB

▶ How to Submit a Method

Welcome [Chemical](#) [Microbiological](#) [Biological](#) [Toxicity](#) [Physical](#) [Regulatory](#)

## Search for a method in NEMI:

Use the links below to search all chemical, microbiological, biological, toxicity, and physical methods in NEMI, or follow the tabs to the right to narrow your search

- ▶ [Analyte Search](#)
- ▶ [General Search](#)
- ▶ [Multi-Analyte Search](#)
- ▶ [Find a Sample Collection, Preparation or Processing Method](#)
- ▶ [Browse all Methods in NEMI](#)

## Partner Highlight



The **Alliance for Coastal Technologies (ACT)** is a NOAA-funded partnership of research institutions, resource managers, and private sector companies dedicated to fostering the development and adoption of effective and reliable sensors and platforms. In addition to conducting independent technology evaluations, ACT provides an **online searchable database** of in situ sensors/analyzer, platforms, and associated equipment for studying and monitoring aquatic environments (from rivers and streams to estuaries and the open ocean).

NEMI is maintained under the direction of the [Methods and Data Comparability Board](#), a partnership of water-quality experts from Federal agencies, States, municipalities, industry, and private organizations. The Methods Board is chartered under the [National Water Quality Monitoring Council](#), whose mission since its charter in May 1997 is to coordinate and provide guidance on implementation of a voluntary, integrated, nationwide monitoring strategy.

Questions?





# WORKGROUPS – FAST FORWARD TO NOW

## ○ Sensors

- QA Initiative
  - ACRR Matrix
  - Field Deployment Guide
  - Data Elements
  - Glossary
- Technology
- ACT/NEMI collaboration



# FUTURE PLANS

- Assessments and Statistics
  - In cahoots w/ WIS workgroup
  - Phase I: trends methods in NEMI
- Bioassessments at small(er) scales
  - Session at conference
    - Define data needs
    - DQOs
    - Reference conditions – definition of
    - Fed. reporting requirements
    - Nest w/in national programs (EPA, Network, NAWQA)



# FUTURE PLANS

[Methods](#)  
[WQDE](#)  
[Objectives](#)  
[Accreditation](#)

## ○ Website redesign

### Accreditation

**What** is accreditation? [[Fact Sheet](#)] [[White Paper](#)]

Accreditation is the independent assessment of an organization's technical competence and quality system. [Tell me more...](#)

**Why** should my lab become accredited?

- To promote uniform competence across laboratories;
- Uniform standards enhance data sharing and improve decision making;
- Reduce costs by promoting *uniform* accreditations. [Tell me more...](#)

**Who** should be accredited?

All federal agencies (and commercial laboratories employed by federal agencies) that perform routine compliance or ambient monitoring. [Tell me more...](#)

**How** does an organization become accredited?

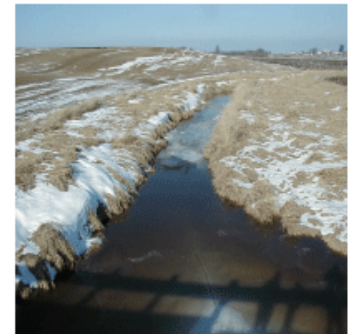
The National Environmental Laboratory Accreditation Program (NELAP) is recommended by Advisory Committee on Water Information (ACWI) as the preferred accreditation body. [Tell me more...](#)

**When** should my organization become accredited?

Each agency or organization should evaluate the cost of implementing this recommendation as it applies to their individual situation. [Tell me more...](#)

**Where:** North America

[Accreditation Fact Sheet](#) (pdf)





# WAY-FUTURE PLANS

- State monitoring programs
  - Carter-Resh survey of invert protocols – what is min. level required?
  - Yoder-Barbour – “Critical Elements” doc – based on 10 criteria to assess whether state mon. programs are sufficiently rigorous
  - Griffith survey of states – update?
  - Data quality/quantity objectives
  - Comparability between states

