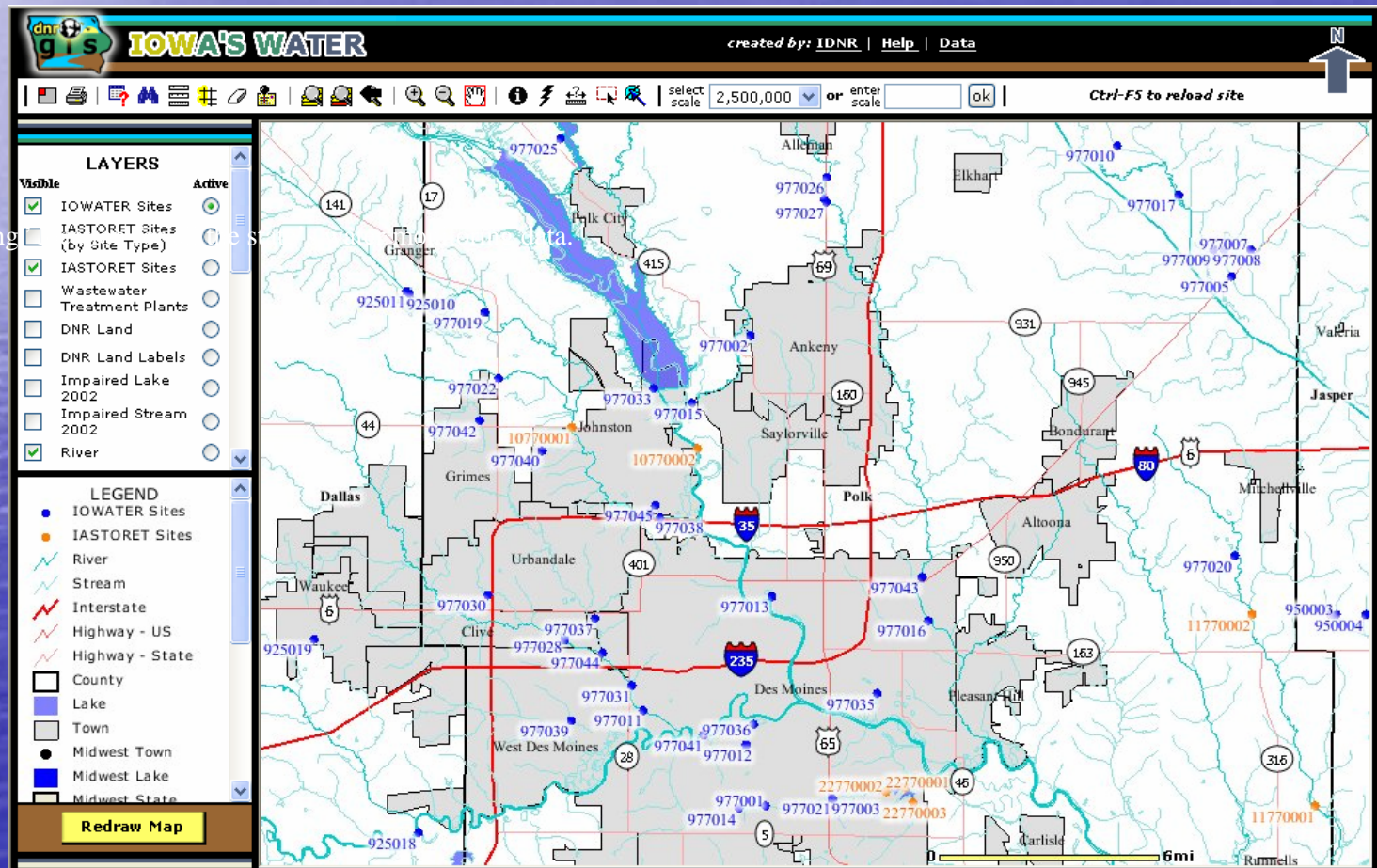


Joost Korpel
Iowa Department of Natural Resources



Iowa Water Monitoring Program:

wqm.igsb.uiowa.edu

Iowa STORET Data:

wqm.igsb.uiowa.edu/iastoret

Iowa Water Monitoring Atlas:

igsims.igsb.uiowa.edu/website/water_monitoring

Goals for Iowa STORET

- “One-stop shopping” location for all the state’s water monitoring data.
- Simplified Web Retrieval
- Customized for Iowa’s users
- Basic online analytic capability.
 - Query by analyte and value range
 - Basic online graphing
 - Basic GIS spatial analysis
- Export results for use with industry standard software
 - Pipe Delimited
 - Xml
- Must be compatible with National STORET



Welcome to Iowa's STORET Database

The ambient water quality program is a diverse program responsible for the collection, analysis and dissemination of information on Iowa's rivers, lakes, groundwater and wetlands. Physical, chemical, biological and habitat data are administered as part of this program. To handle this complex data set, the [Iowa Department of Natural Resources](#) (IDNR) is using the Environmental Protection Agency (EPA) database called STORET (STOrage and RETrieval). Iowa's STORET database runs on a Oracle™ database platform and is managed by the [water monitoring section](#) of the [Iowa Geological Survey Bureau](#). Ultimately, the water monitoring section envisions Iowa STORET as a "one-stop shopping" location for all the state's water monitoring data. For information on current and future monitoring data in STORET [click here](#).

**Water quality data is available from the following Organizations.
Please select one from the list below:**

21IOWA - Iowa Dept. of Natural Resources
IOWATER - Iowa Volunteer Water Monitoring Program

Program Summary

4/26/2004

21IOWA**Iowa Dept. of Natural Resources****Organizational
Program**

Agricultural Drainage Well Closure: Floyd County

This program will monitor and document groundwater quality improvements resulting from the closure of three agricultural drainage wells (ADWs) in central Floyd County. These ADWs discharge nonpoint source pollutants from agricultural tile drainage and some runoff into the three-part (upper, middle and lower) Devonian carbonate aquifer system. Two of the ADWs proposed for closure are 65 feet deep and are injecting water into the upper Devonian aquifer while the third ADW is over 300 feet deep and is injecting water into all three of the aquifers. As of August 1994, closure plans for two additional ADWs near the proposed area of study have been reviewed and approved. One of these wells is over 300 feet deep and is relatively near the other deep well. This affords an opportunity to monitor the effects of five ADW closures: two deep (>300 feet) ADWs as well as three shallower ADWs in the Devonian aquifer system. In this area the Devonian aquifers are covered with over 50 feet of low permeability materials and past investigations have shown that groundwaters in such areas are naturally protected from agricultural contaminants.

Project	ADW1995	Ag Drainage Well Closure Project (Floyd Co.) WY1995
Project	ADW1996	Ag Drainage Well Closure Project (Floyd Co.) WY1996
Project	ADW1997	Ag Drainage Well Closure Project (Floyd Co.) WY1997
Project	ADW1998	Ag Drainage Well Closure Project (Floyd Co.) WY1998

Project Summary

4/26/2004

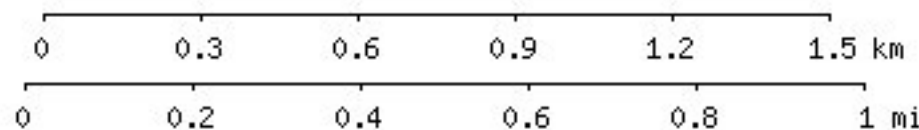
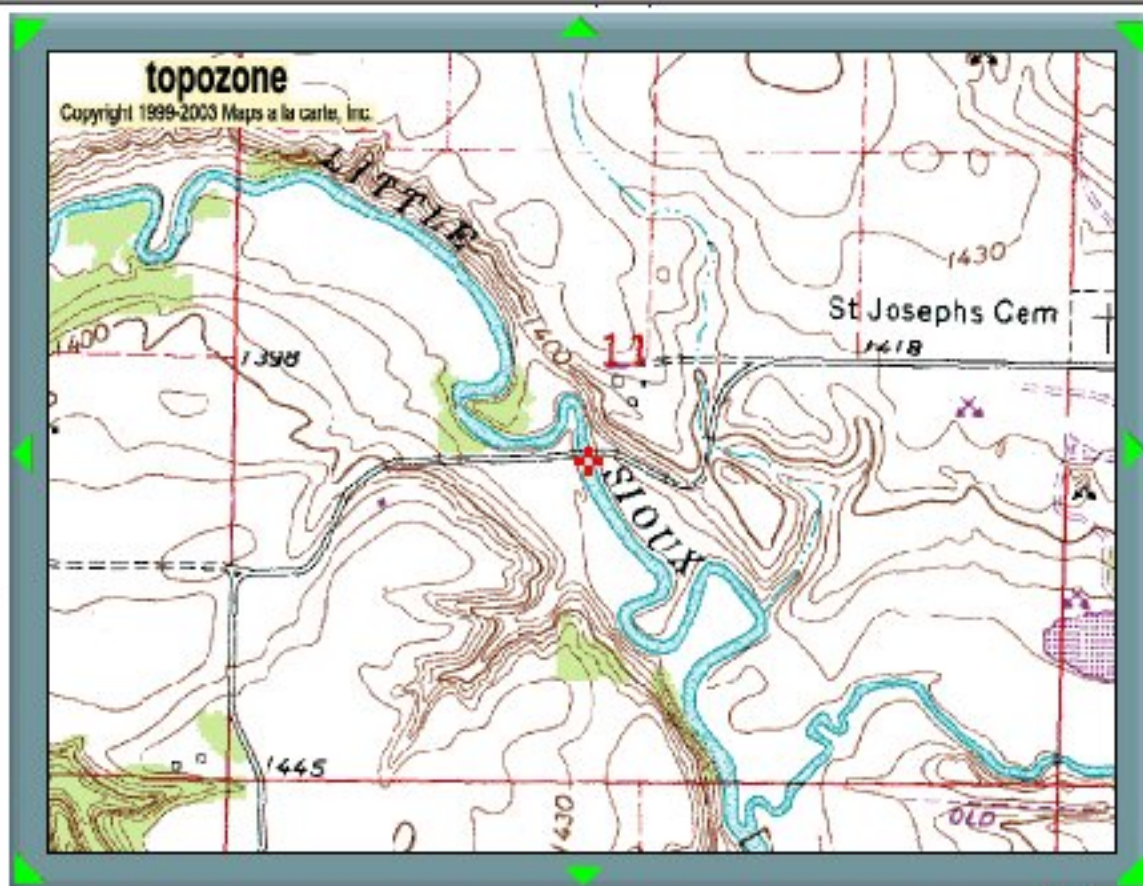
21IOWA**Iowa Dept. of Natural Resources****Project** AMB2003 Enhanced Ambient Surface Water Monitoring FY03**Start Date** 10/1/2002 **Planned Duration** one year**Purpose** Purpose of this project is to assess Iowa's surface water resources for ambient conditions.

Project Design University Hygienic Laboratory personnel collect samples from 59 fixed stations every month. The original 16 monthly stations remain as the core monitoring stations. The Monona-Harrison Ditch, South Skunk River at Ames, Des Moines River in Ottumwa, and the Winnebago River in Mason City stations were discontinued in FY01. Samples are to be taken on a fixed day within the month to ensure consistency, but some leeway is provided. Additionally, 7 sites (one in each ecoregion) will have flow-driven sampling. At these 7 sites, additional samples, not to exceed one daily, will be obtained promptly when the following stream thresholds are achieved after March 1: The first time discharge reaches the 50th percentile based on historical flow records (based on USGS flow records), each time discharge reaches the 75th percentile level following a lower discharge (weekly samples to be drawn if discharge remains above the 75th percentile, unless the monthly sample is scheduled that week), and each time discharge reaches the 90th percentile of historical flow levels. These additional samples will total no more than 18 events in addition to the 12 monthly samples.

Station Summary

4/26/2004

21IOWA Iowa Dept. of Natural Resources**Station** [10300001](#) / Little Sioux River near Milford**Station Type** River/Stream**Location Type** *POINT OF RECORD**Seq #****Latitude** 43.3189**Longitude** -95.1811**Method** Invalid**Datum** Invalid**Elevation** 1360ft**Measure****Method** Invalid**Datum** Invalid**Hydrologic Unit** 10230003 / Little Sioux..**Code/Name****RF1 River** --- / ---**Reach****Primary County Assignment****County:** DICKINSON**State/Province:** IOWA**Country:** UNITED STATES



$M = 3.38$
 $G = -1.497$



Iowa's STORET Water Quality Database

21IOWA → *Projects*

Please select project(s) to retrieve water monitoring data. To select more than one project hold down the ctrl key (command/apple key on the Macintosh) while clicking. To select all projects click on the first project in the list and hold down the shift key while clicking on the last project.

ADW1995 - Ag Drainage Well Closure Project (Floyd Co.) WY1995
ADW1996 - Ag Drainage Well Closure Project (Floyd Co.) WY1996
ADW1997 - Ag Drainage Well Closure Project (Floyd Co.) WY1997
ADW1998 - Ag Drainage Well Closure Project (Floyd Co.) WY1998
AMB1999 - Ambient Surface Water Monitoring FY99
AMB2000 - Enhanced Ambient Surface Water Monitoring FY00
AMB2001 - Enhanced Ambient Surface Water Monitoring FY01
AMB2002 - Enhanced Ambient Surface Water Monitoring FY02
AMB2003 - Enhanced Ambient Surface Water Monitoring FY03
AMB2004 - Enhanced Ambient Surface Water Monitoring FY04
BALINT00 - Intensive Balance Monitoring of 3 watershed during 2000
BEA1999 - Beach Monitoring at 12 State-Owned Beaches during 1999
BEA2000 - Beach Monitoring at 31 State-Owned Beaches during 2000
BEA2001 - Beach Monitoring at 35 State-Owned Beaches during 2001



Iowa's STORET Water Quality Database

21IOWA → **Projects** → **Stations**

Select Geographic Search Option:

**** To select more than one choice from a list, hold down the ctrl key (command/apple key on the Macintosh) while clicking. To select all choices click on the first choice in the list and hold down the shift key while clicking on the last choice.**

Option 1: Select Station Name(s):

Beaver Creek near Cedar Falls - 10070001
Beaver Creek near Grimes - 10770001
Big Spring (BSP) - 30220001
Black Hawk Creek at Waterloo - 10070004
Bloody Run Creek Site #1 (BR01) - 10220003

OR

Option 2: Select County Name(s):

OR

Option 2: Select County Name(s):

la - Allamakee
la - Appanoose
la - Black Hawk
la - Bremer
la - Buchanan

Submit

Reset

OR

Option 3: Select HUC8 Name (s):

Cedar River - Lower - 07080206
Cedar River - Middle - 07080205
Cedar River - Upper - 07080201
Chariton River - Shoal Creek - 10280201
Des Moines River - Cylinder Creek - 07100002

Submit

Reset



Iowa's STORET Water Quality Database

[21IOWA](#) → [Projects](#) → [Hydrologic Basin \(HUC8\)](#) → [Stations](#)

**** To select more than one choice from a list, hold down the ctrl key (command/apple key on the Macintosh) while clicking. To select all choices click on the first choice in the list and hold down the shift key while clicking on the last choice.**

Option 1: Select Station Name(s):

ADW-1 - 35340020
ADW-2 - 35340021
ADW-3 - 35340022
Beaver Creek near Cedar Falls - 10070001
Bennett Creek SW of Bennett (10) - 11160001
Black Hawk Creek at Popp Access (17) - 11070003
Black Hawk Creek at Waterloo - 10070004
Black Hawk Creek at Waterloo (15) - 11070005
Black Hawk Creek in Waterloo (14) - 11070002
Black Hawk Creek NE of Hudson (16) - 11070004

Submit

Reset



Iowa's STORET Water Quality Database

[21IOWA](#) → [Projects](#) → [Stations](#) → [Parameters](#)

Select Parameter Option: [\(Information about parameters.\)](#)

Option 1 - Return All Parameters:

Enter range of date values:

From  to 

OR....

Option 2 - Select at least one parameter and enter a range of values:

Parameter 1:

Values Between and inclusive

Parameter 2:

From to

OR....

Option 3 - Select multiple parameters:

- Amb. Field Measurements (air)
- Ambient Field Parameters
- Bacteria**
- Chlorophyll
- Inorganic Chemistry
- Metals
- Nutrients
- PCBs
- Pesticides

- Enterococcus Group Bacteria**
- Escherichia coli (E. coli)
- Fecal Coliform

Enter range of date values:

From  to 

OR....

Option 2 - Select at least one parameter and enter a range of values:

Parameter 1: Nitrogen, Nitrite (NO₂) + Nitrate (NO₃) as N

Values Between 15 and 100000 inclusive

Parameter 2:

Values Between 0 and 100000 inclusive

Parameter 3:

Values Between 0 and 100000 inclusive

Enter range of date values:

From 1/1/2003 to 12/31/2003

Submit Reset

OR....



Iowa's STORET Water Quality Database

21IOWA → [Projects](#) → [Stations](#) → [Results](#)

ADW-1 -35340020

Pivot table v

[Start over!](#) | [Export results](#) | [Graph results](#) | [Station Info](#)

11380003	M.F. South Beaver Creek NW of Wellsburg (45)	5/15/2003 11:00:00 AM	Nitrogen, Nitrite (NO2) + Nitrate (NO3) as N	17	mg/l
11380003	M.F. South Beaver Creek NW of Wellsburg (45)	6/12/2003 11:00:00 AM	Nitrogen, Nitrite (NO2) + Nitrate (NO3) as N	19	mg/l
11380003	M.F. South Beaver Creek NW of Wellsburg (45)	6/23/2003 10:30:00 AM	Nitrogen, Nitrite (NO2) + Nitrate (NO3) as N	17	mg/l
11380003	M.F. South Beaver Creek NW of Wellsburg (45)	6/30/2003 10:45:00 AM	Nitrogen, Nitrite (NO2) + Nitrate (NO3) as N	18	mg/l
11380003	M.F. South Beaver Creek NW of Wellsburg (45)	7/16/2003 10:45:00 AM	Nitrogen, Nitrite (NO2) + Nitrate (NO3) as N	17	mg/l
11420001	M.F. South Beaver Creek at Ackley (47)	5/15/2003 11:45:00 AM	Nitrogen, Nitrite (NO2) + Nitrate (NO3) as N	18	mg/l

**Iowa's STORET Water Quality Database****Please select graphing options:**

Group Series By

Parameter

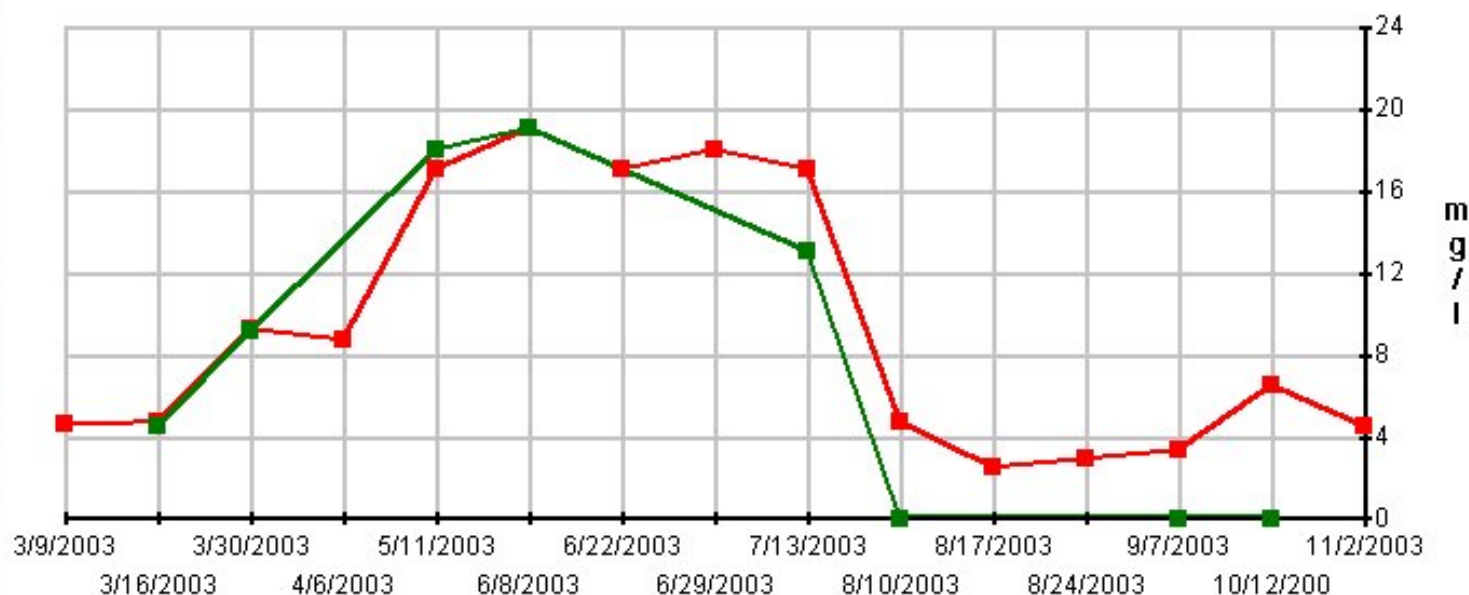
Group Time By

Week

Graph Type:

MultiLine

Make Graph

Nitrogen, Nitrite (NO₂) + Nitrate (NO₃) as N

Grouped by Week with Sunday start date

■ 11380003 - M.F. South Beaver Creek NW of Wellsburg (45) ■ 11420001 - M.F. South Beaver Creek at Ackley (47)



Iowa's STORET Water Quality Database

→ [Projects](#) → [Stations](#) → [Parameters](#)

Select an Export Option:

[Pipe delimited text file - brief results format](#)

[Pipe delimited text file - detailed results format](#)

[XML file - brief results format](#)

[XML file - detailed results format](#)

STORET ID	Station Name	Start Date	Parameter	Result	Detect Status	Units	Detection Limit	Analytical Method
11380003	M.F. South Beaver Creek NW of Wellsburg (45)	3/13/2003 11:30:00 AM	Nitrogen, Nitrite (NO2) + Nitrate (NO3) as N	4.6	4.6	mg/l	0.1	USEPA -353.2
11380003	M.F. South Beaver Creek NW of Wellsburg (45)	3/19/2003 10:30:00 AM	Nitrogen, Nitrite (NO2) + Nitrate (NO3) as N	4.7	4.7	mg/l	0.1	USEPA -353.2
11380003	M.F. South Beaver Creek NW of Wellsburg (45)	4/1/2003 11:30:00 AM	Nitrogen, Nitrite (NO2) + Nitrate (NO3) as N	9.2	9.2	mg/l	0.1	USEPA -353.2
11380003	M.F. South Beaver Creek NW of Wellsburg (45)	4/8/2003 1:00:00 PM	Nitrogen, Nitrite (NO2) + Nitrate (NO3) as N	8.7	8.7	mg/l	0.1	USEPA -353.2
11380003	M.F. South Beaver Creek NW of Wellsburg (45)	5/15/2003 11:00:00 AM	Nitrogen, Nitrite (NO2) + Nitrate (NO3) as N	17	17	mg/l	0.1	USEPA -353.2
11380003	M.F. South Beaver Creek NW of Wellsburg (45)	6/12/2003 11:00:00 AM	Nitrogen, Nitrite (NO2) + Nitrate (NO3) as N	19	19	mg/l	0.1	USEPA -353.2
11380003	M.F. South Beaver Creek NW of Wellsburg (45)	6/23/2003 10:30:00 AM	Nitrogen, Nitrite (NO2) + Nitrate (NO3) as N	17	17	mg/l	0.1	USEPA -353.2
11380003	M.F. South Beaver Creek NW of Wellsburg (45)	6/30/2003 10:45:00 AM	Nitrogen, Nitrite (NO2) + Nitrate (NO3) as N	18	18	mg/l	0.1	USEPA -353.2
11380003	M.F. South Beaver Creek NW of Wellsburg (45)	7/16/2003 10:45:00 AM	Nitrogen, Nitrite (NO2) + Nitrate (NO3) as N	17	17	mg/l	0.1	USEPA -353.2
11380003	M.F. South Beaver Creek NW of Wellsburg (45)	8/13/2003 11:00:00 AM	Nitrogen, Nitrite (NO2) + Nitrate (NO3) as N	4.7	4.7	mg/l	0.1	USEPA -353.2
11380003	M.F. South Beaver Creek NW of Wellsburg (45)	8/13/2003 11:00:00 AM	Nitrogen, Nitrite (NO2) + Nitrate (NO3) as N	4.7	4.7	mg/l	0.1	USEPA -353.2
11380003	M.F. South Beaver Creek NW of Wellsburg (45)	8/20/2003 10:00:00 AM	Nitrogen, Nitrite (NO2) + Nitrate (NO3) as N	4.7	4.7	mg/l	0.1	USEPA -353.2


```
<?xml version="1.0" ?>
- <IaData xmlns:dt="urn:schemas-microsoft-com:datatypes">
  - <IaStoret>
    <StoretID>11380003</StoretID>
    <STATION_NAME>M.F. South Beaver Creek NW of Wellsburg (45)
      </STATION_NAME>
    <ACTIVITY_START_DATE>3/13/2003 11:30:00 AM</ACTIVITY_START_DATE>
    <ACTIVITY_START_TIME>3/13/2003 11:30:00 AM</ACTIVITY_START_TIME>
    <Parameter>Nitrogen, Nitrite (NO2) + Nitrate (NO3) as N</Parameter>
    <ACTIVITY_IS_NUMBER>28755</ACTIVITY_IS_NUMBER>
    <ParameterValue>4.6</ParameterValue>
    <RESULT_VALUE_TEXT>4.6</RESULT_VALUE_TEXT>
    <RESULT_UNIT>mg/l</RESULT_UNIT>
    <DETECTION_LIMIT>0.1</DETECTION_LIMIT>

    <ANALYTICAL_PROCEDURE_SOURCE>USEPA</ANALYTICAL_PROCEDURE_SOURCE>
    <ANALYTICAL_PROCEDURE_ID>353.2</ANALYTICAL_PROCEDURE_ID>
    <RESULT_IS_NUMBER>326535</RESULT_IS_NUMBER>
  </IaStoret>
  - <IaStoret>
    <StoretID>11380003</StoretID>
    <STATION_NAME>M.F. South Beaver Creek NW of Wellsburg (45)
      </STATION_NAME>
    <ACTIVITY_START_DATE>3/19/2003 10:30:00 AM</ACTIVITY_START_DATE>
    <ACTIVITY_START_TIME>3/19/2003 10:30:00 AM</ACTIVITY_START_TIME>
    <Parameter>Nitrogen, Nitrite (NO2) + Nitrate (NO3) as N</Parameter>
    <ACTIVITY_IS_NUMBER>28756</ACTIVITY_IS_NUMBER>
    <ParameterValue>4.7</ParameterValue>
```


Iowa Water Monitoring Program:

wqm.igsb.uiowa.edu

Iowa STORET Data:

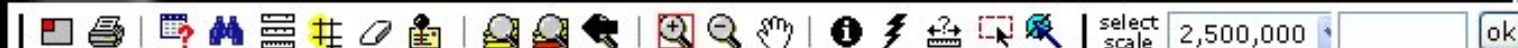
wqm.igsb.uiowa.edu/iastoret

Iowa Water Monitoring Atlas:

igsims.igsb.uiowa.edu/website/water_monitoring



IOWA'S WATER

created by: [IDNR](#) | [Help](#) | [Data](#)

LAYERS

Visible

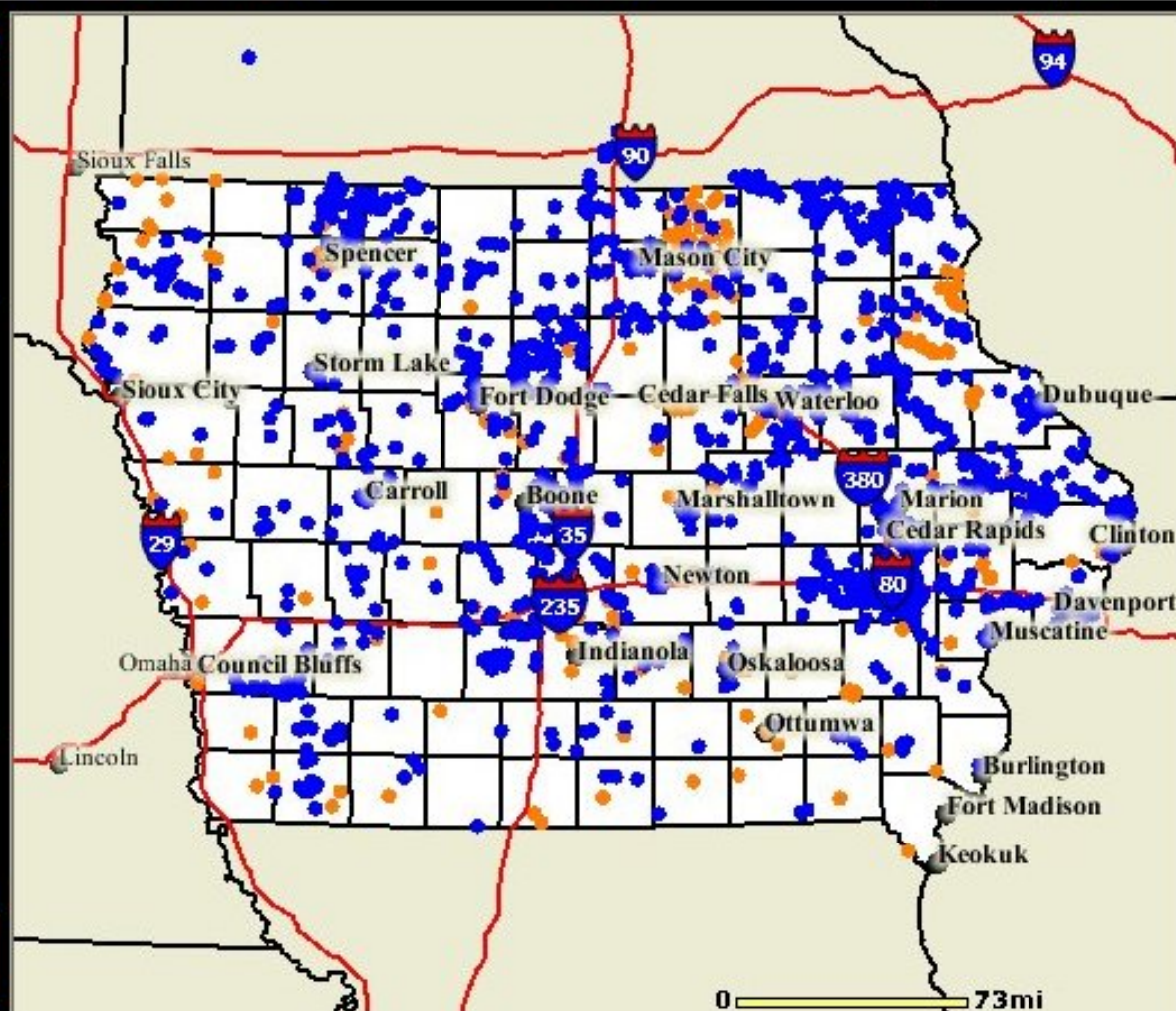
Active

- | | | |
|-------------------------------------|-----------------------------|----------------------------------|
| <input checked="" type="checkbox"/> | IOWATER Sites | <input checked="" type="radio"/> |
| <input checked="" type="checkbox"/> | IASTORET Sites | <input type="radio"/> |
| <input type="checkbox"/> | Wastewater Treatment Plants | <input type="radio"/> |
| <input type="checkbox"/> | DNR Land | <input type="radio"/> |
| <input type="checkbox"/> | Impaired Lake 2002 | <input type="radio"/> |
| <input type="checkbox"/> | Impaired Stream 2002 | <input type="radio"/> |
| <input checked="" type="checkbox"/> | Interstate | <input type="radio"/> |

LEGEND

- IOWATER Sites
- IASTORET Sites
- Interstate
- Town
- County
- Midwest Town
- Midwest Lake
- Midwest State

Redraw Map



http://igsims.igsb.uiowa.edu/website/Water_Monitoring/query.htm - Micros...

HUC8 Number = 07080206

Get Samples

Add to Query String HUC_8 = "07080201" OR HUC_8 = "07080205" OR

Execute Undo Clear

And Or
Not ()

Query/Selection Results - Microsoft Internet E...

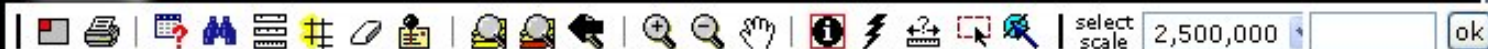
Watershed: 8-Digit HUC

Zoom To	HUC8 Number	Acres
<u>1</u>	<u>07080201</u>	1078299
<u>2</u>	<u>07080205</u>	1546942
<u>3</u>	<u>07080206</u>	703170

Zoom to these records



IOWA'S WATER

created by: [IDNR](#) | [Help](#) | [Data](#)

select scale 2,500,000

ok

LAYERS

Visible

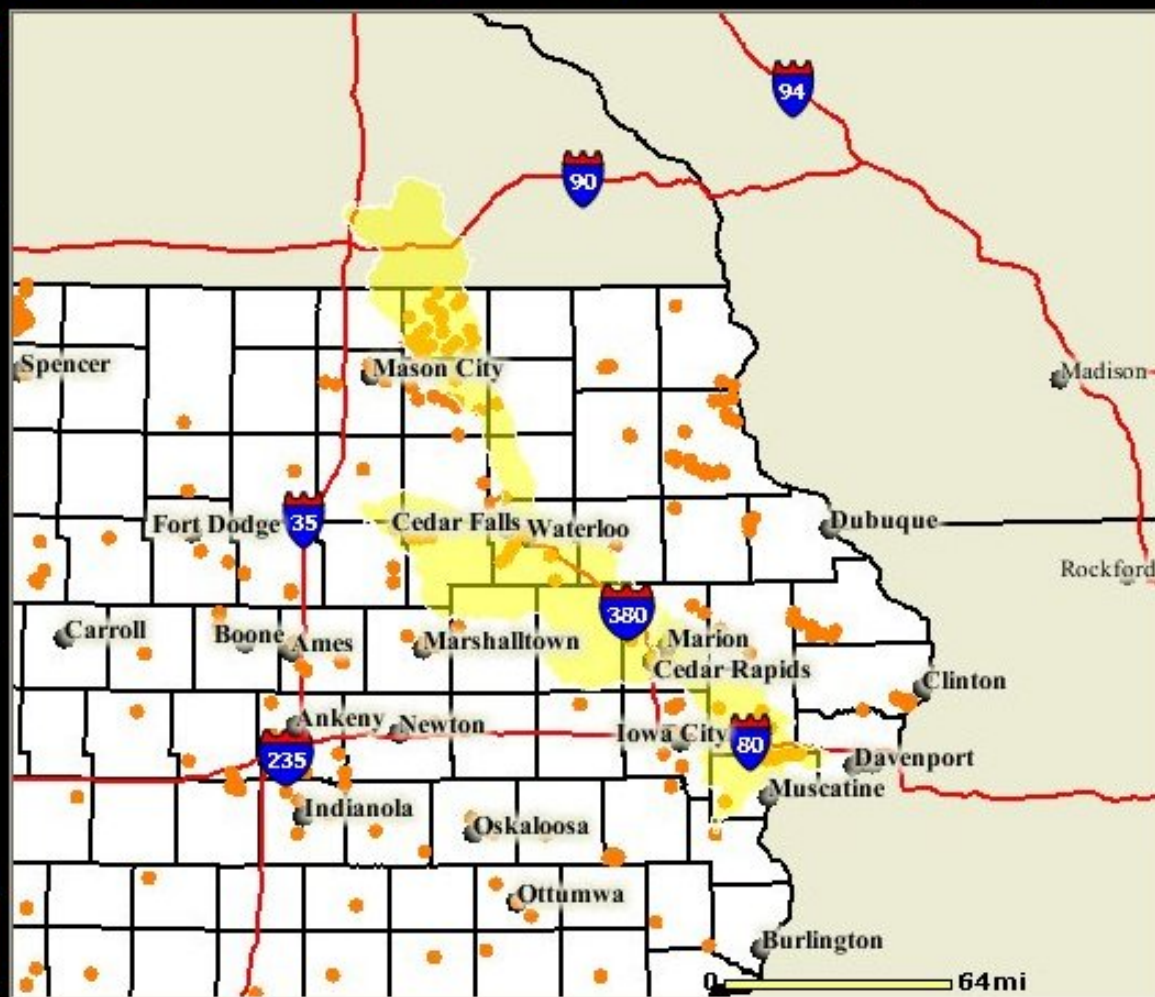
Active

- | | | |
|-------------------------------------|-----------------------------|-----------------------|
| <input type="checkbox"/> | IOWATER Sites | <input type="radio"/> |
| <input checked="" type="checkbox"/> | IASTORET Sites | <input type="radio"/> |
| <input type="checkbox"/> | Wastewater Treatment Plants | <input type="radio"/> |
| <input type="checkbox"/> | DNR Land | <input type="radio"/> |
| <input type="checkbox"/> | Impaired Lake 2002 | <input type="radio"/> |
| <input type="checkbox"/> | Impaired Stream 2002 | <input type="radio"/> |
| <input checked="" type="checkbox"/> | River | <input type="radio"/> |

LEGEND

- Selected Features
- IASTORET Sites
- River
- Interstate
- Highway - US
- Highway - State
- County
- Watershed: 8-Digit HUC
- Lake

Redraw Map



IASTORET Sites


Zoom To	STORET ID	Station Name	County Name	County Code	Site Type	Station Type	HUC8 Name
26	35660025	FM 483	MITCHELL	19131	Floyd Mitchell Groundwater Pro	Well	07080201
27	35660026	FM 663	MITCHELL	19131	Floyd Mitchell Groundwater Pro	Well	07080201
28	35660027	FM 320	MITCHELL	19131	Floyd Mitchell Groundwater Pro	Well	07080201
29	35660028	FM 699	MITCHELL	19131	Floyd Mitchell Groundwater Pro	Well	07080201
30	35340002	FM1-2	FLOYD	19067	Floyd Mitchell Groundwater Pro	Well	07080201
31	35340003	FM1-3	FLOYD	19067	Floyd Mitchell Groundwater Pro	Well	07080201
32	35340004	FM1-4	FLOYD	19067	Floyd Mitchell Groundwater Pro	Well	07080201
33	35660001	FM2-1	MITCHELL	19131	Floyd Mitchell Groundwater Pro	Well	07080201
34	35660002	FM2-2	MITCHELL	19131	Floyd Mitchell Groundwater Pro	Well	07080201
35	35660003	FM2-3	MITCHELL	19131	Floyd Mitchell Groundwater Pro	Well	07080201
36	35660004	FM2-4	MITCHELL	19131	Floyd Mitchell Groundwater Pro	Well	07080201
37	15570003	McCloud Run at Cedar Rapids	LINN	19113	Sny Magill 319 Project	River/Stream	07080205
38	15570002	Indian Creek near Marion	LINN	19113	Sny Magill 319 Project	River/Stream	07080206
39	15570001	Indian Creek near Cedar Rapids	LINN	19113	Sny Magill 319 Project	River/Stream	07080206
40	10340001	Cedar River near Charles City	FLOYD	19067	Ambient Site	River/Stream	07080201
41	10090001	Cedar River near Janesville	BREMER	19017	Ambient Site	River/Stream	07080201
42	10070001	Beaver Creek near Cedar Falls	BLACK HAWK	19013	Ambient Site	River/Stream	07080205
43	10070004	Black Hawk Creek at Waterloo	BLACK HAWK	19013	Ambient Site	River/Stream	07080205
44	10070002	Wolf Creek at La Porte City	BLACK HAWK	19013	Ambient Site	River/Stream	07080205
45	10160001	Cedar River at Cedar Bluff	CEDAR	19031	Ambient Site	River/Stream	07080206
46	10700001	Cedar River near Conesville	MUSCATINE	19139	Ambient Site	River/Stream	07080206
47	10070005	Cedar River Upstream of Waterloo/Cedar Falls	BLACK HAWK	19013	City Site	River/Stream	07080205
48	10070006	Cedar River Downstream of Waterloo	BLACK HAWK	19013	City Site	River/Stream	07080205

**Iowa's STORET Water Quality Database****Station: 15570003****21iowa → Projects → Stations → Parameters**Select Parameter Option: [\(Information about parameters.\)](#)**Option 1 - Return All Parameters:**

Enter range of date values:

From  to 

OR....

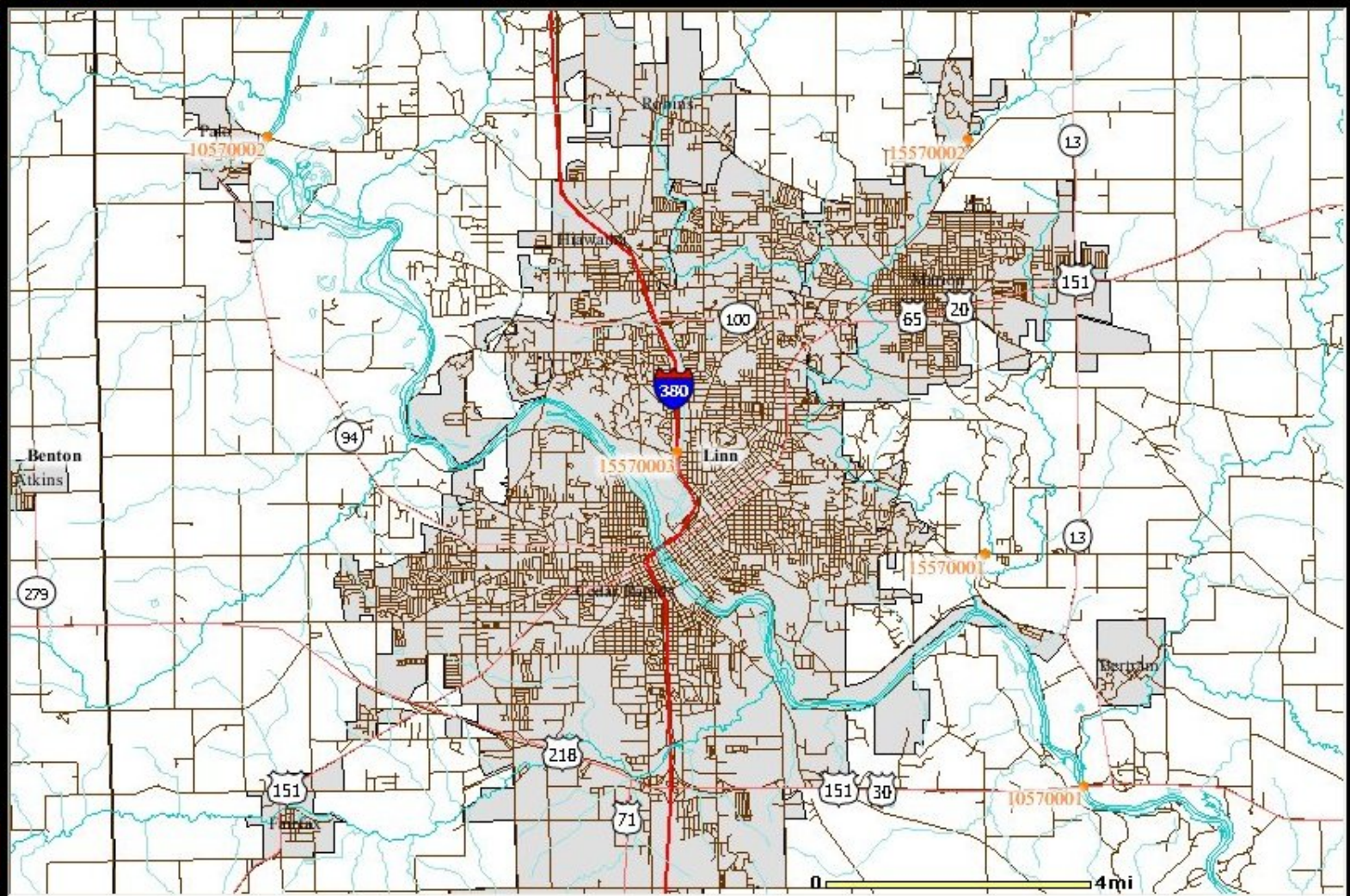
Option 2 - Select at least one parameter and enter a range of values:Parameter 1: Values Between 0 and 100000 inclusiveParameter 2: Values Between 0 and 100000 inclusiveParameter 3: Values Between 0 and 100000 inclusive

created by: [IDNR](#) | [Help](#) | [Data](#)select scale 2,500,000 or enter scale ok Ctrl-F5 to reload site

- LAYERS**
- | Visible | Active |
|--|----------------------------------|
| <input type="checkbox"/> IOWATER Sites | <input type="radio"/> |
| <input type="checkbox"/> IASTORET Sites (by Site Type) | <input type="radio"/> |
| <input checked="" type="checkbox"/> IASTORET Sites | <input checked="" type="radio"/> |
| <input type="checkbox"/> Wastewater Treatment Plants | <input type="radio"/> |
| <input type="checkbox"/> DNR Land | <input type="radio"/> |
| <input type="checkbox"/> DNR Land Labels | <input type="radio"/> |
| <input type="checkbox"/> Impaired Lake 2002 | <input type="radio"/> |
| <input type="checkbox"/> Impaired Stream 2002 | <input type="radio"/> |
| <input checked="" type="checkbox"/> River | <input type="radio"/> |

- LEGEND**
- Selected Features
 - IOWATER Sites
 - IASTORET Sites
 - River
 - Stream
 - Interstate
 - Highway - US
 - Highway - State
 - County
 - Lake
 - Town
 - Midwest Town

Redraw Map



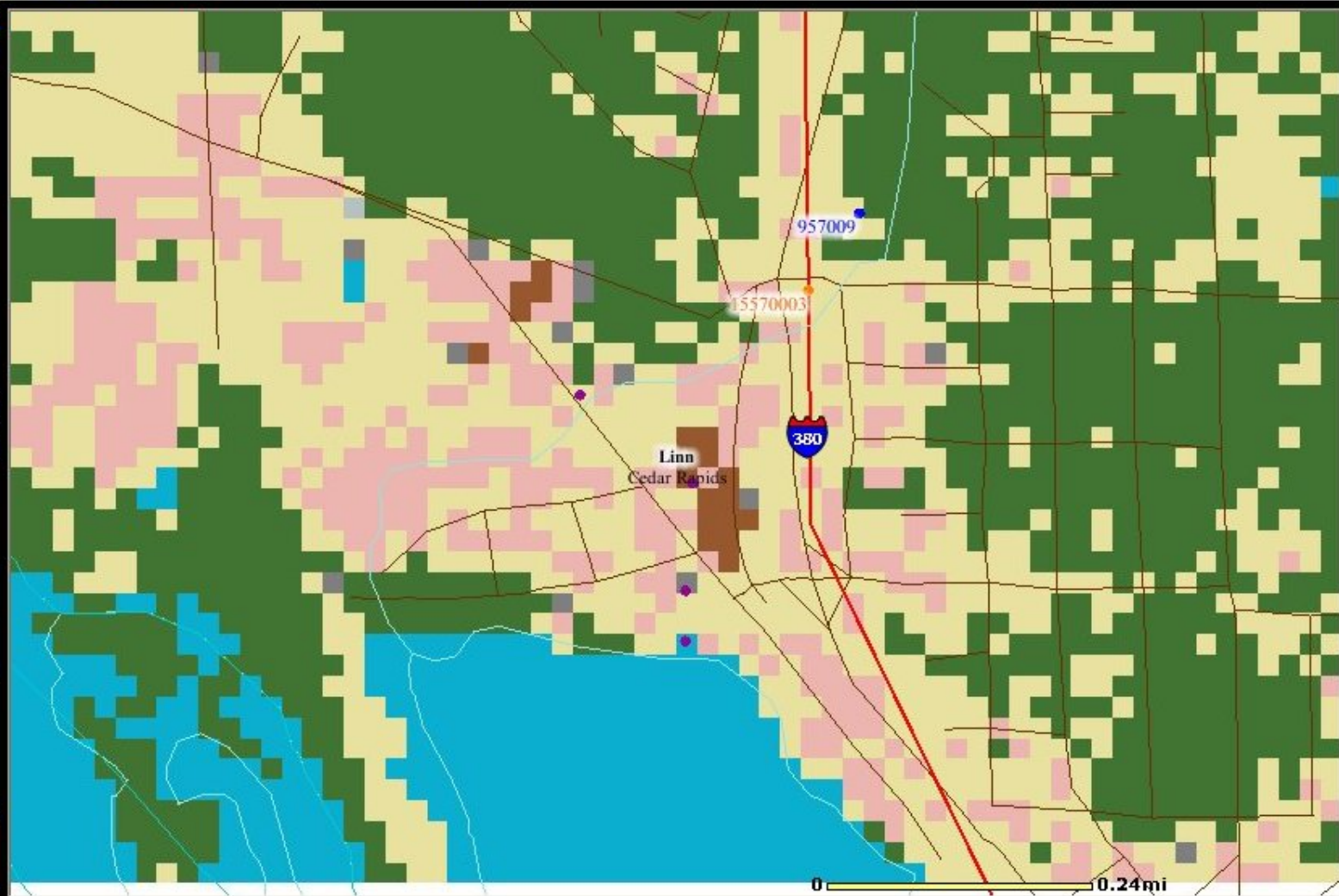
created by: [IDNR](#) | [Help](#) | [Data](#)select scale 2,500,000 or enter scale ok

Ctrl-F5 to reload site

- ☐ Organized Drainage District
- ☒ Lake
- ☐ Lake Watershed
- ☒ Town
- ☒ Midwest Town
- ☒ Midwest Lake
- ☒ Midwest State
- 1:24K
- ☐ Topographic Maps
- ☐ Air Photography (CIR) 2002
- ☒ Land Cover 2000

- ☒ Lake
- ☐ Town
- ☒ Midwest Town
- ☒ Midwest Lake
- ☒ Midwest State
- Land Cover 2000
- ☒ Water
- ☒ Forest
- ☒ Grass / Hay
- ☒ Corn
- ☒ Bean
- ☒ Urban / Artificial
- ☒ Barren / Sparse Veg
- ☐ No Data

Redraw Map





IOWA'S WATER

created by: [IDNR](#) | [Help](#) | [Data](#)select scale 2,500,000 or enter scale ok Ctrl-F5 to reload site

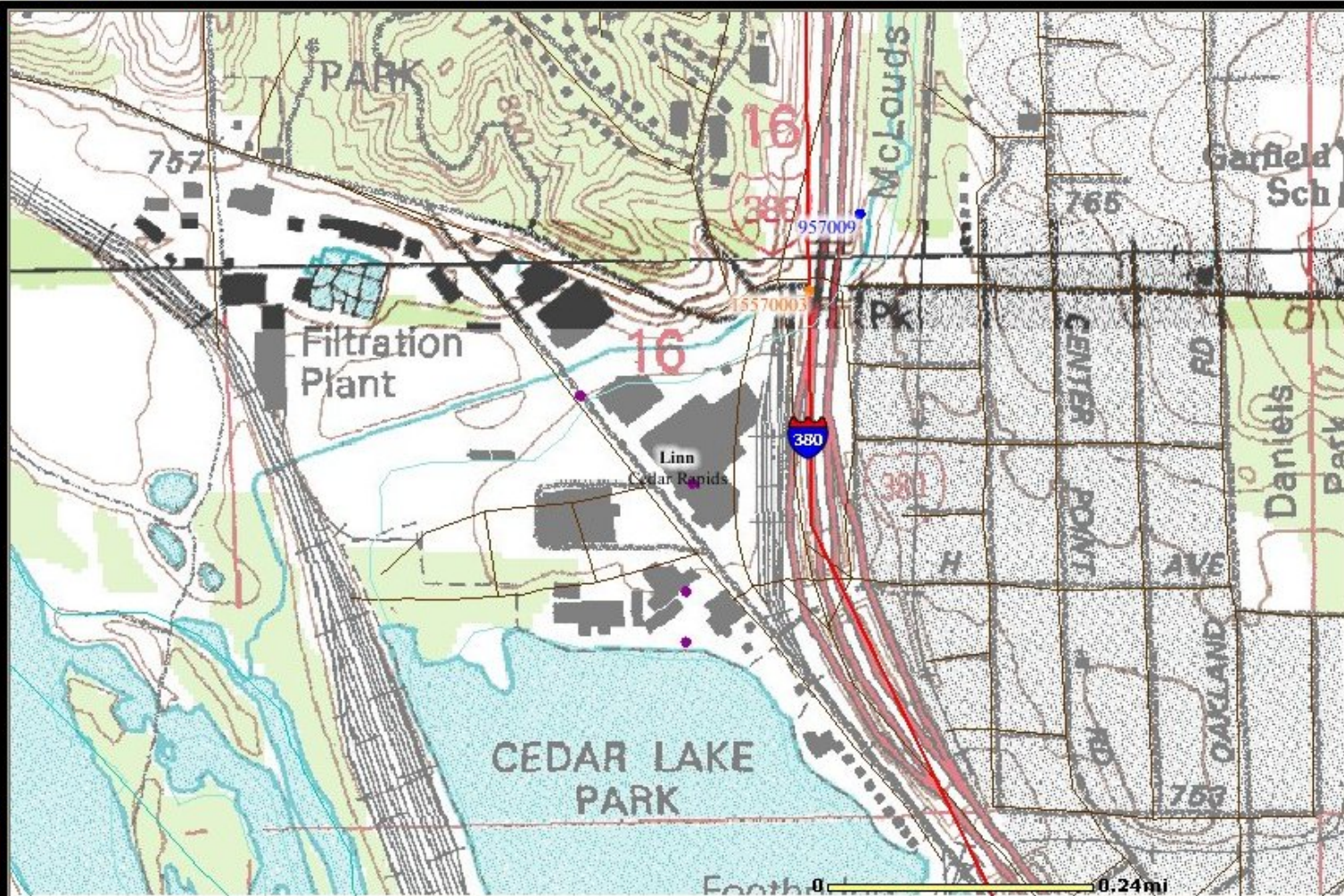
LAYERS

Visible	Active
<input checked="" type="checkbox"/>	<input type="radio"/>
IOWATER Sites	
<input type="checkbox"/>	<input type="radio"/>
IASTORET Sites (by Site Type)	
<input checked="" type="checkbox"/>	<input checked="" type="radio"/>
IASTORET Sites	
<input checked="" type="checkbox"/>	<input type="radio"/>
Wastewater Treatment Plants	
<input type="checkbox"/>	<input type="radio"/>
DNR Land	
<input type="checkbox"/>	<input type="radio"/>
DNR Land Labels	
<input type="checkbox"/>	<input type="radio"/>
Impaired Lake 2002	
<input type="checkbox"/>	<input type="radio"/>
Impaired Stream 2002	
<input type="checkbox"/>	<input type="radio"/>
<input checked="" type="checkbox"/>	<input checked="" type="radio"/>
River	

LEGEND

- IOWATER Sites
- IASTORET Sites
- Wastewater Treatment Plants
- River
- Stream
- Interstate
- Highway - US
- Highway - State
- Road (Geocoded)
- County
- Lake
- Town

Redraw Map



created by: [IDNR](#) | [Help](#) | [Data](#)select scale 2,500,000 or enter scale ok

Ctrl-F5 to reload site

- ☐ Organized Drainage District
- ☒ Lake
- ☐ Lake Watershed
- ☒ Town
- ☒ Midwest Town
- ☒ Midwest Lake
- ☒ Midwest State
- 1:24K
- ☐ Topographic Maps
- ☒ Air Photography (CIR) 2002
- ☐ Land Cover 2000

LEGEND

- IOWATER Sites
- IASTORET Sites
- Wastewater Treatment Plants
- River
- Stream
- Interstate
- Highway - US
- Highway - State
- Road (Geocoded)
- County
- Lake
- Town

Redraw Map



Questions?

Joost Korpel

Iowa Department of Natural Resources
Iowa Geological Survey

Phone: 319-335-4019

Email: Jkorpel@igsb.uiowa.edu