




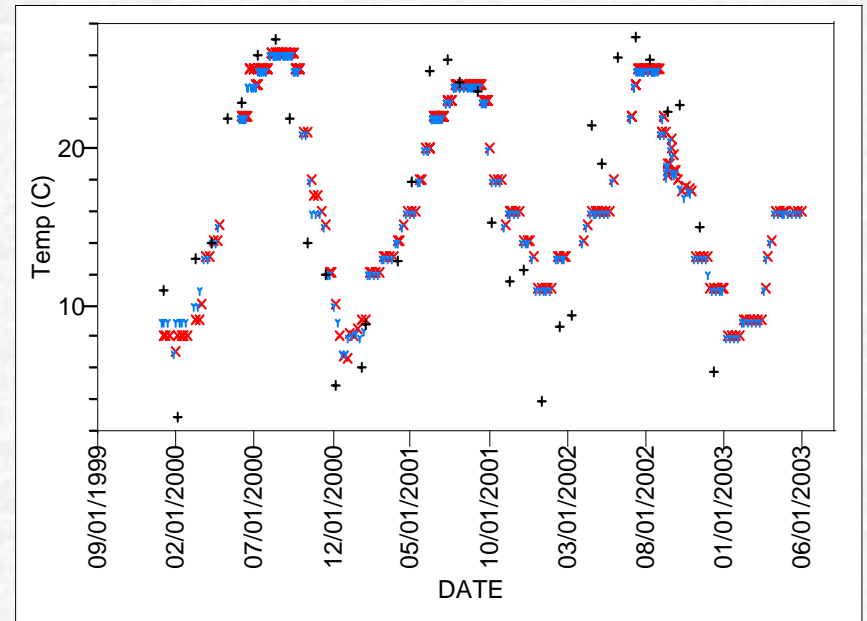
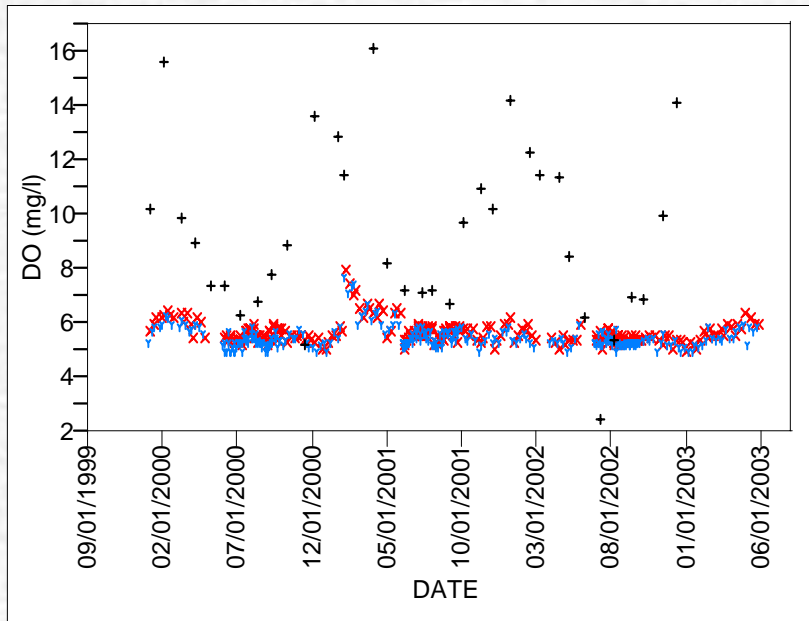
North Carolina's Discharge Monitoring Coalition Program

Coalition based instream monitoring:
old requirements, new cooperation,
better water quality assessment.



Pre-Coalition Data Quality Concerns

Example: Facility reported data and data collected by State at same ups station



black = State ambient data,

red = discharger ups data, blue = discharger dns data

Discharge Monitoring Coalitions in North Carolina



- 5 Active Coalitions
- 3 Watersheds
- 132 Facilities
- 230 Stations



North Carolina

Division of Water Quality has combined NPDES instream monitoring requirements with watershed based ambient monitoring to create an effective program for assessing water quality.

Goals:



- ✓ Produce high quality ambient data
- ✓ Consistent data from state certified lab with field certified sampling staff
- ✓ Evaluate instream impact of dischargers
- ✓ Evaluate compliance with WQ standards
- ✓ Possibly save permit holders money
- ✓ Document water quality changes

Monitoring Program Development

- Review NPDES Permits
- Identify Watershed Health and Issues
- Support Specific Objectives



Memorandum of Agreement (MOA)



- Contract between DWQ and permit holders
- Identifies coalition responsibilities
- WQ monitoring and reporting requirements

Coalition Responsibilities

- ☛ Hire a contractor/contract laboratory
- ☛ Coalition Management Structure
- ☛ Contract Management
- ☛ Money
- ☛ Data Review/Data Mgmt
- ☛ Annual Report Development



DWQ Coordinator

- MOA Development
- Data Sharing
- QA/QC Activities
- Data Evaluation
- Field Audits
- Facilitate Intra-DWQ Communication



Coalition Monitoring

- Watershed orientation
- Replaces NPDES instream monitoring
- MOA outlines requirements and monitoring plan
- Electronically submitted data
- Evaluate compliance with WQ standards



Data Usage?

- Basinwide Water Quality Assessment
- Basinwide Planning
- Evaluate WQ Impact of Dischargers
- Track Instream Response to Mgmt. Efforts
- ID WQ concerns
- NPS Characterization



Trade Offs

Pros

- Increased Data Availability
- Coordinated Monitoring
- Basinwide Effort
- Consistent Data Analysis
- Standardized Data Collection
- Additional Parameters
- Special Studies
- Reduced Cost

Cons

- Reduced monitoring frequency
- U/D data not always collected for every facility
- Station Reduction
- Management Responsibilities
- Increased Cost

North Carolina



Monitoring Coalition Program Lauren Elmore

✉ lauren.elmore @ncmail.net

✉ (919) 733-9960 ext 206