

STORET Hosting for the EPA Region VIII Tribes



Project Lifecycle



Identify Needs

- ✧ Work with the Southern Ute Tribe to identify local and regional needs.
 - ◆ Load Data into Modernized STORET
 - ◆ Wide Variety in Technical Capabilities of Users
 - ◆ Retain Local Control of Data
 - ◆ Keep Data Private and Secure
 - ◆ Ease of Data Import and Retrieval

STORET Integration Assessment

✱ Complete STORET Integration Assessment for the Southern Ute Tribe.

- ✱ Oracle License Fees
- ✱ Need for DBA Support
- ✱ Single vs. Multiple User Environments
- ✱ STORET Training and Assistance



Design

-
- ✦ Single Regional Installation - Single Oracle License
 - ✦ Centralized DBA Support
 - ✦ Web Based Interface provides Local Control
 - ✦ Data Warehouse to Provide Access to Data
 - ✦ User Based Security for Entry and Retrieval
 - ✦ Provide Regional Training and Telephone Support

WebSIM Development

- ✦ Developed Web-Based Solution
- ✦ Initial Hosting provided by Gold Systems, Inc.
- ✦ Interface Demonstration
 - ✦ (Screen shots represent latest release of WebSIM)



Simple Six Step Processing

[Home](#) [Stations](#) [Results](#) [Import Configuration](#) [Advanced](#) [Site Help](#) [Logout](#)

**WebSIM - v2.0.1 - STORET Import Module**
Fast Track Import Process

Getting Started: Complete the steps listed below for the Fast Track Import Process. Help is given on the link to the right of every step.

- 1** [Step One:](#) [Step 1 Help](#)
Establish STORET Metadata Defaults - Select this option to view the Office of Water's Metadata Registry Software.
- 2** [Step Two:](#) [Step 2 Help](#)
Format Data and Create Import Files - Select this option to view and download the EPA's Region 8 Formatting Guidance Document.
- 3** [Step Three:](#) [Step 3 Help](#)
Upload File to the FTP Site - Select this option to upload data files to the organization specific FTP Site.
- 4** [Step Four:](#) [Step 4 Help](#)
Select the Import Configuration - Select this option to select from a list of existing Import Configurations regardless of import type.
Current Status: No Configuration Selected
- 5** [Step Five:](#) [Step 5 Help](#)
Select the File to be Imported - Select this option to select a file uploaded to the organization specific FTP Site.
Current Status: No Import File Selected
- 6** [Step Six:](#) [Step 6 Help](#)
Import Step - Select this option to initiate the import process.

Take a Tour! 
Click here to find out how to use the **Fast Track Import Process**

Quick Links:
[Stations Import Log](#)
[Imported Stations](#)
[Results Import Log](#)
[Imported Results](#)
[Migration Log](#)

Step 1 – Setup Metadata

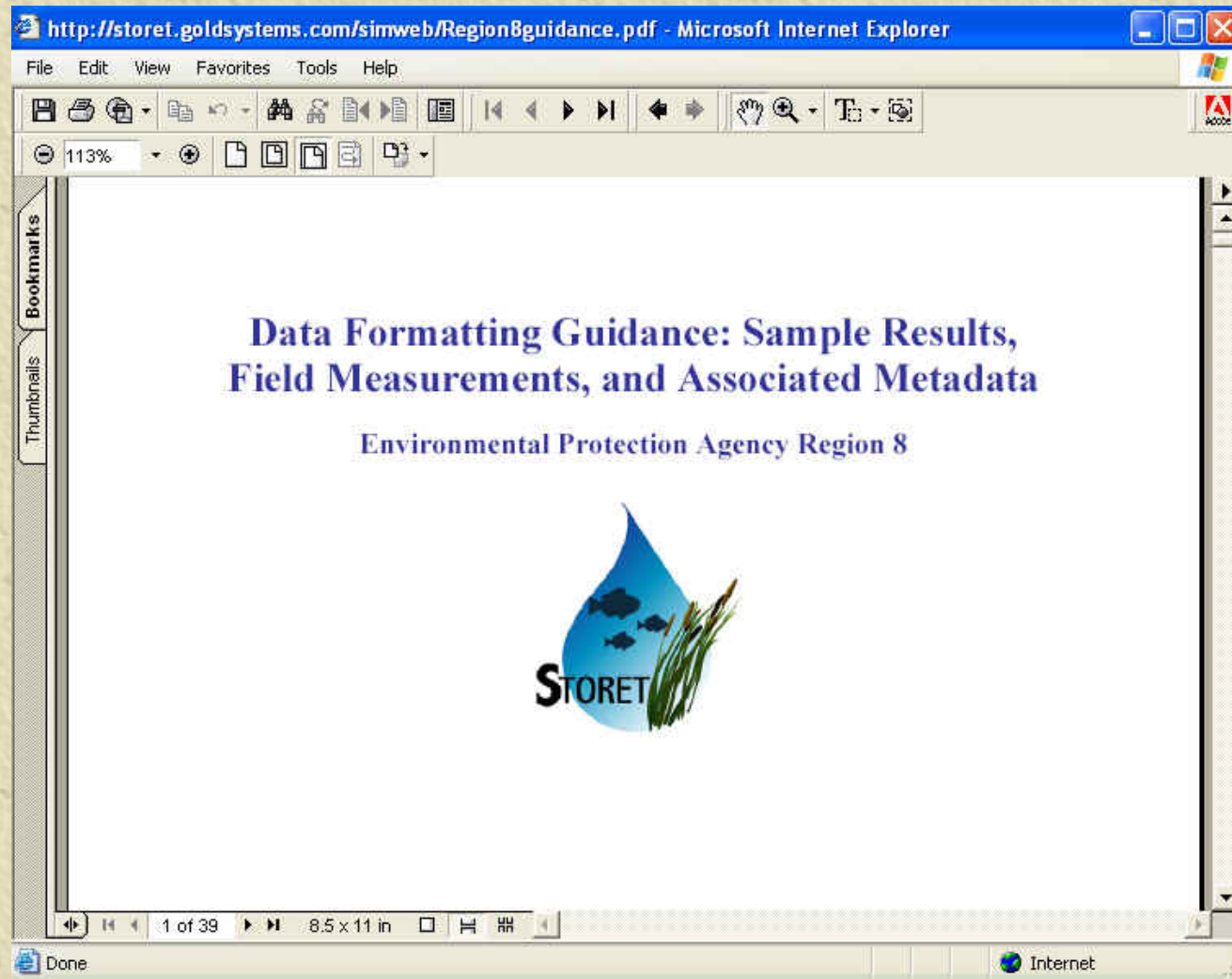
The screenshot displays the Oracle Web Registration Application interface. The title bar includes the Oracle logo and the text "Web Registration Application". The menu bar contains "Action", "Edit", "Query", "Block", "Record", "Form", "Window", and "Help". The toolbar features various icons for file operations, navigation, and editing.

The main content area is divided into several sections:

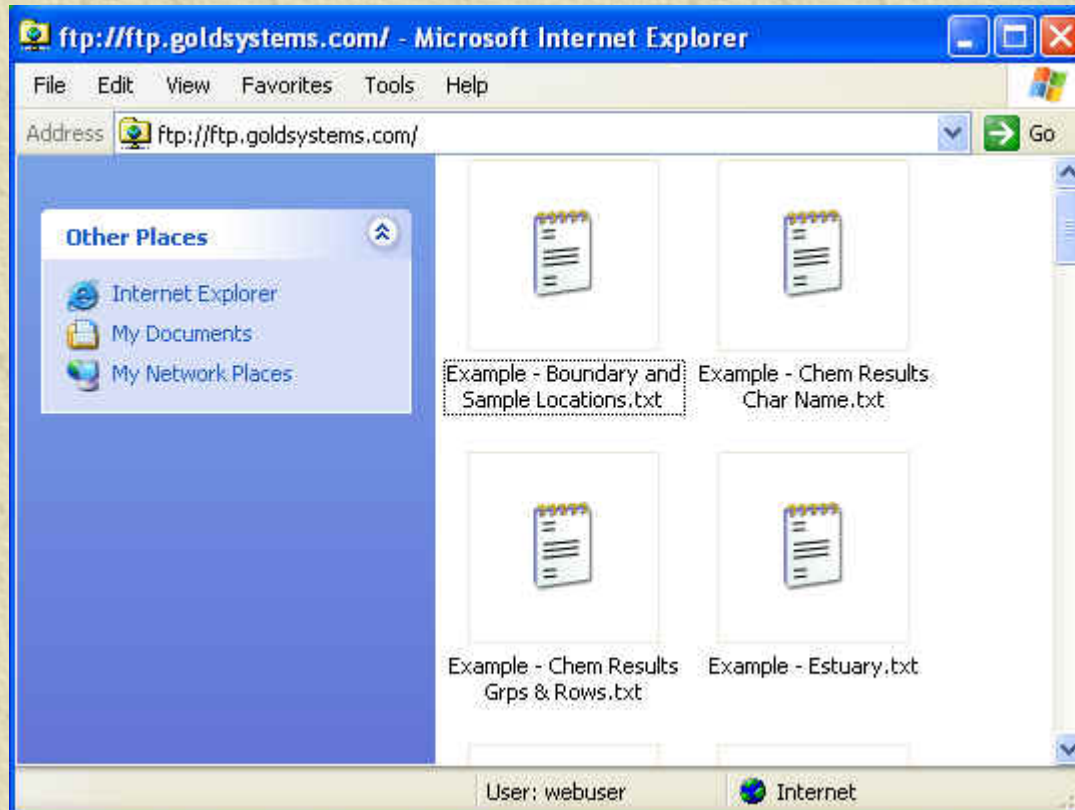
- Organization ID Name:** A table with two columns. The first row is highlighted in yellow and contains "DEMOTEST" and "The Commission for a Good Clean Chesapeake Bay". There are four empty rows below it.
- Organization Information:** A section containing two buttons: "Org Description" and "Cooperating Org/Personnel".
- Operational Activities:** A section containing two buttons: "Projects" and "Stations".
- Preferences and Defaults:** A section containing several buttons: "Citations", "Laboratories", "Field/Lab Analytical Procedures", "Sample Collection/Creation Procedures and Gear", "Sample Preservation, Transport and Storage", and "Characteristic Groups and Defaults".

The status bar at the bottom shows "Organization ID", "Record: 1/1", and "<OSC>".

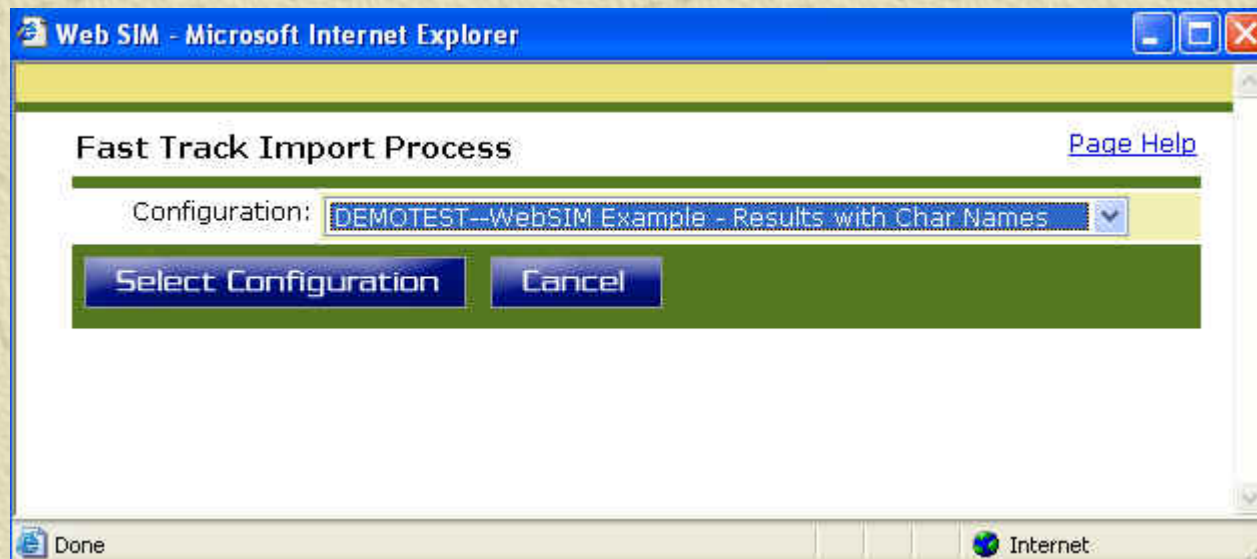
Step 2 – Data Management



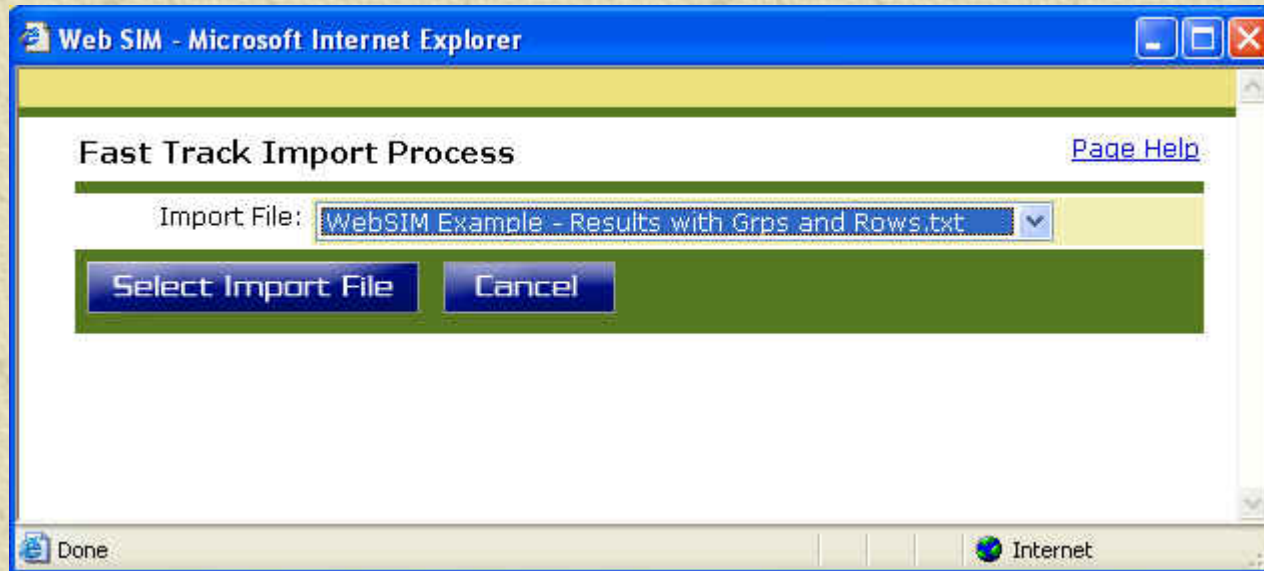
Step 3 – Upload Your File



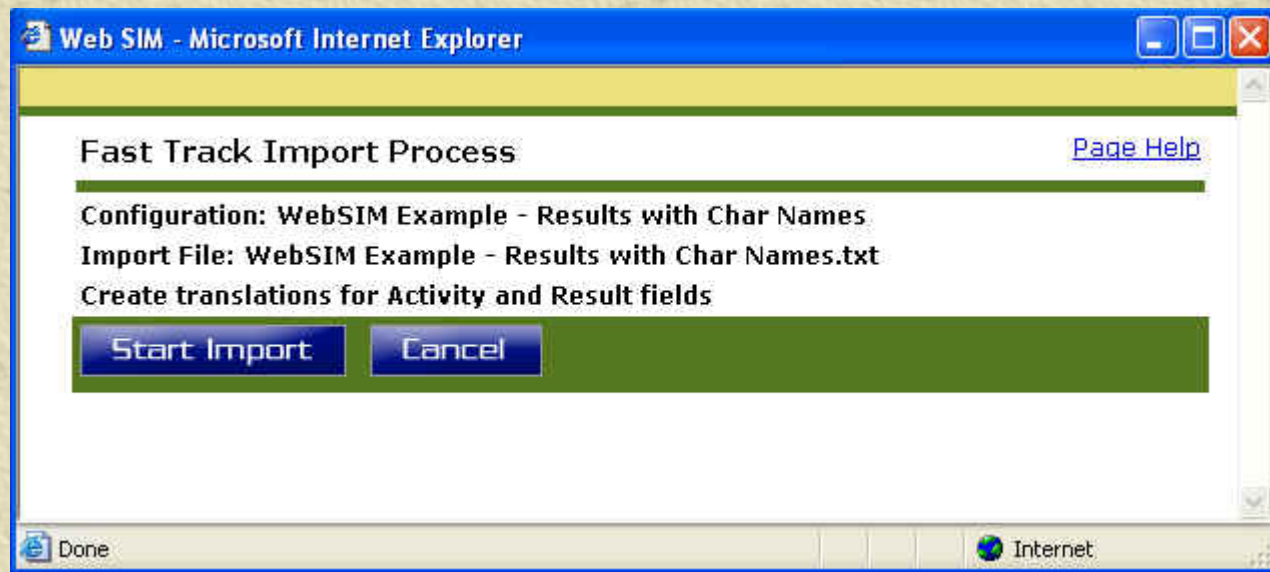
Step 4 – Select Configuration



Step 5 - Select Import File



Step 6 – Import File



Managing Your Imports

[Home](#) [Stations](#) [Results](#) [Import Configuration](#) [Advanced](#) [Site Help](#) [Logout](#)

**WebSIM - v2.0.1 - STORET Import Module**
**Stations**

Import Status [Page Help](#)

Import 106632 Completed Successfully

Org ID:	DEMOTEST
Import Configuration:	WebSIM Example - Results with Char Names
Import File:	WebSIM Example - Results with Char Names.txt
Date Imported:	04/26/04
Imported Lines Processed:	6
Lines with Errors:	0
Activities Ready for Migration:	2
Results Ready for Migration:	6

[Migrate Records to STORET](#)

[Delete Import from SIM](#)

[Return To Previous](#)

[STORET Home](#) - [EPA Office of Water](#) - [Gold Systems, Inc.](#)

Managing Your Configurations

[Home](#) [Stations](#) [Results](#) [Import Configuration](#) [Advanced](#) [Site Help](#) [Logout](#)

**WebSIM - v2.0.1 - STORET Import Module**
**Import Configuration**

[Page Help](#)

Name:

Type: WEB RESULTS-WebSIM Field Activity and Result load definition

Description:

Org ID: Delimiter:

[Save Configuration](#)
[Delete Configuration](#)
[Set Instructions](#)

Column	Pos	Incl	Default	Max	Format Option	Format	Translation
Trip ID	<input type="text" value="1"/>	<input checked="" type="checkbox"/>	<input type="text"/>	15	Freetext		Translation
Trip Start Date	<input type="text" value="2"/>	<input checked="" type="checkbox"/>	<input type="text"/>	10	Defined Format	<input type="text"/>	Translation
Trip Stop Date	<input type="text" value="3"/>	<input checked="" type="checkbox"/>	<input type="text"/>	10	Defined Format	<input type="text"/>	Translation
Trip Name	<input type="text" value="4"/>	<input checked="" type="checkbox"/>	<input type="text"/>	60	Freetext		Translation
Station ID	<input type="text" value="5"/>	<input checked="" type="checkbox"/>	<input type="text"/>	15	STORET Table		Translation
Additional Location Information	<input type="text" value="6"/>	<input checked="" type="checkbox"/>	<input type="text"/>	254	Freetext		Translation
Station Visit Number	<input type="text" value="7"/>	<input checked="" type="checkbox"/>	<input type="text"/>	3	Freetext		Translation
Station Visit Arrival Date	<input type="text" value="8"/>	<input checked="" type="checkbox"/>	<input type="text"/>	10	Defined Format	<input type="text"/>	Translation

Implementation and Training

- ✦ Launch Initial WebSIM Environment
- ✦ Provide Regional Demonstrations
- ✦ Gather Initial Feedback on Application
- ✦ Provide Data Migration Assistance



Implementation 4.
and Training

Maintenance

- ✦ Provide Routine Database Maintenance
- ✦ Upgrade WebSIM to Support STORET v2
- ✦ Add Enhancements from other WebSIM Development Projects

Maintenance 5.



Project Lifecycle Continues ...

-
- ✦ On-Site Data Management Workshops
 - ✦ New Regional STORET Web Portal
 - ✦ Deployed Regional Copy of National STORET Warehouse



Gauging Success

-
- ✧ 16 of 27 Tribes have loaded data into the Regional STORET.
 - ✧ Several additional tribes have begun organizing their data for STORET.
 - ✧ The WebSIM application is being implemented for other programs with similar needs including Regional Superfund and Volunteer Monitoring programs.