

GLNPO Indicators Monitoring

Presented by David Rockwell

National Monitoring Conference May 2004

Glenn Warren GLNPO

Paul Bertram GLNPO

Steve Ruberg NOAA-GLERL

Douglas Salisbury Computer Science Corp

GLNPO's Base Monitoring Program

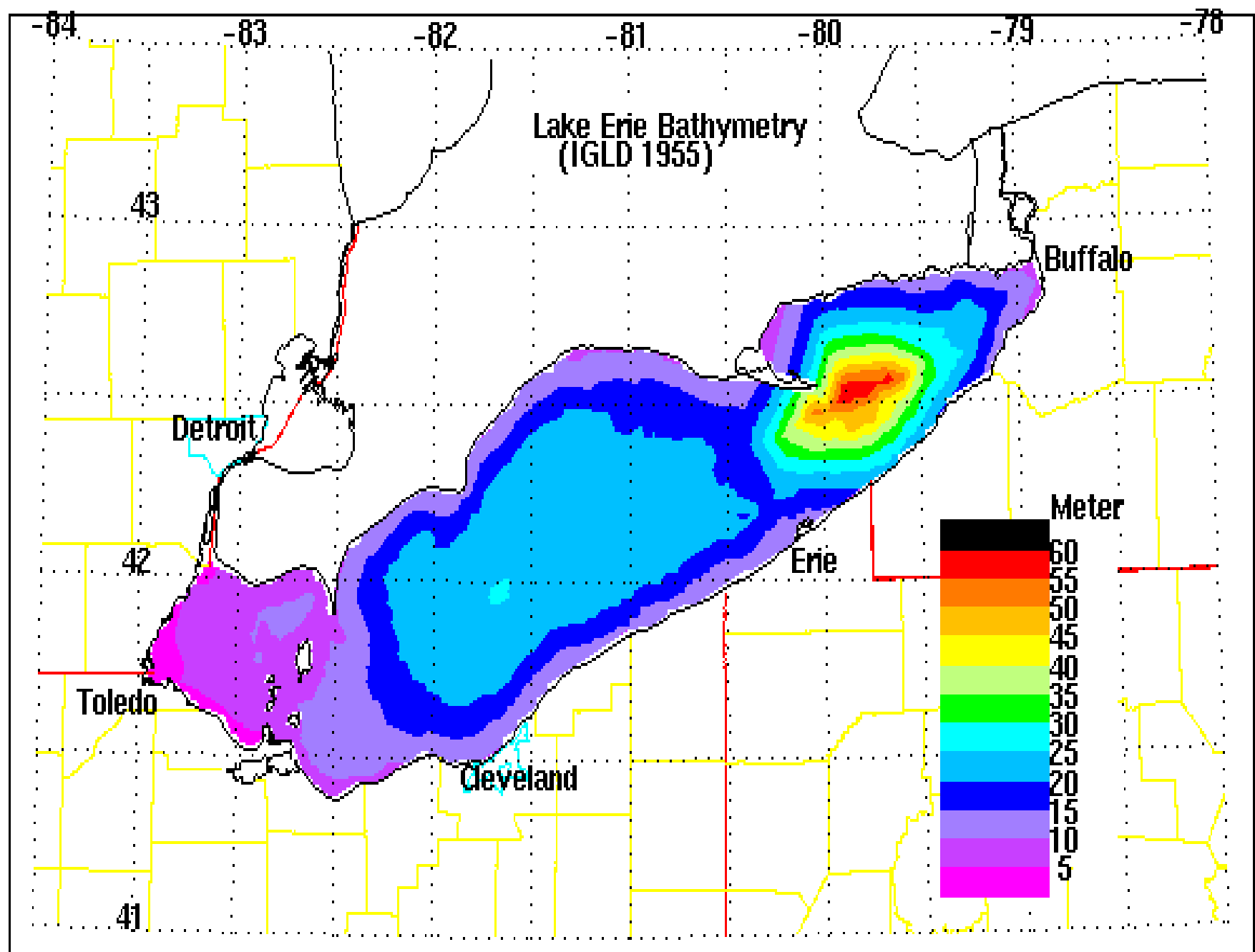
- Spring and Summer Surveys in all Five Great Lakes
 - 30 stations sampled for toxic organics
 - 46 stations sampled for benthos
 - 73 stations sampled for nutrients, plankton and conservative ions
- Seven Surveys for Dissolved Oxygen in Lake Erie



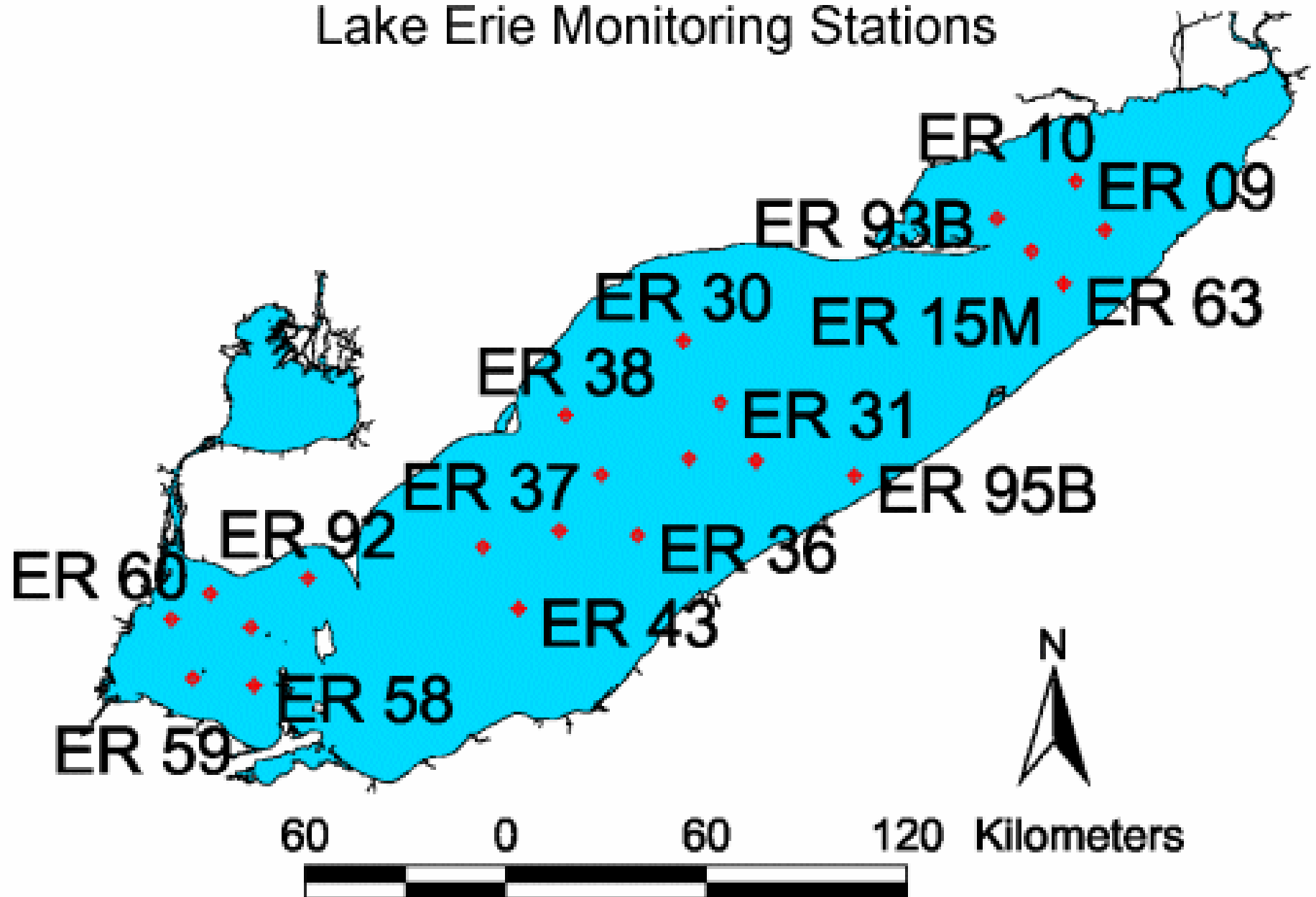


Monitoring Water Quality

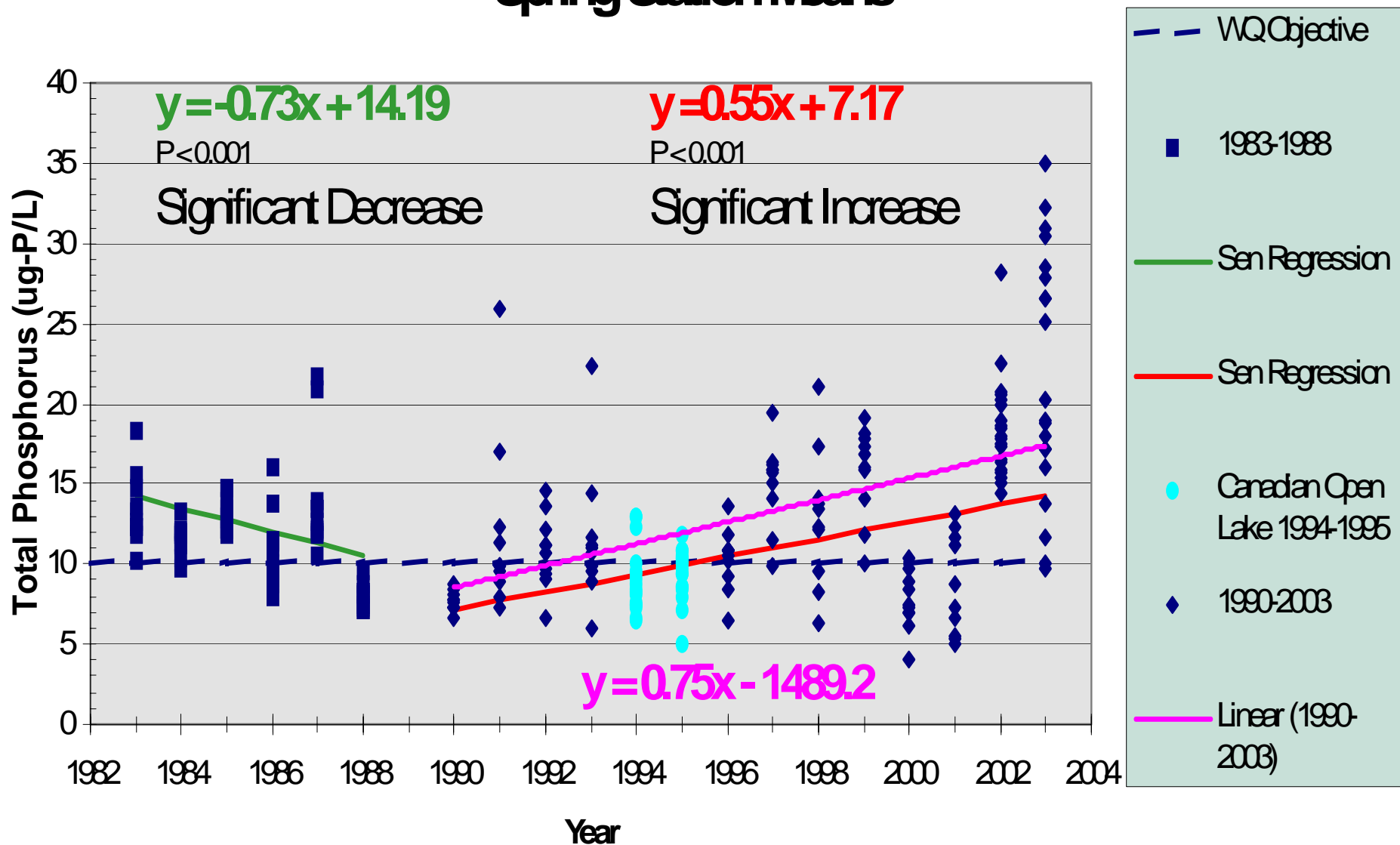
- **Chemistry**
 - **Nutrients (phosphorus, nitrogen, chloride, silica, etc.)**
 - **Contaminants (PCBs, DDT, etc.)**
 - **Other (pH, alkalinity, turbidity, conductivity, dissolved oxygen)**
- **Physics**
 - **Temperature, transparency, suspended solids, air pressure,**
- **Biology**
 - **Chlorophyll, phytoplankton, zooplankton, benthic organisms**



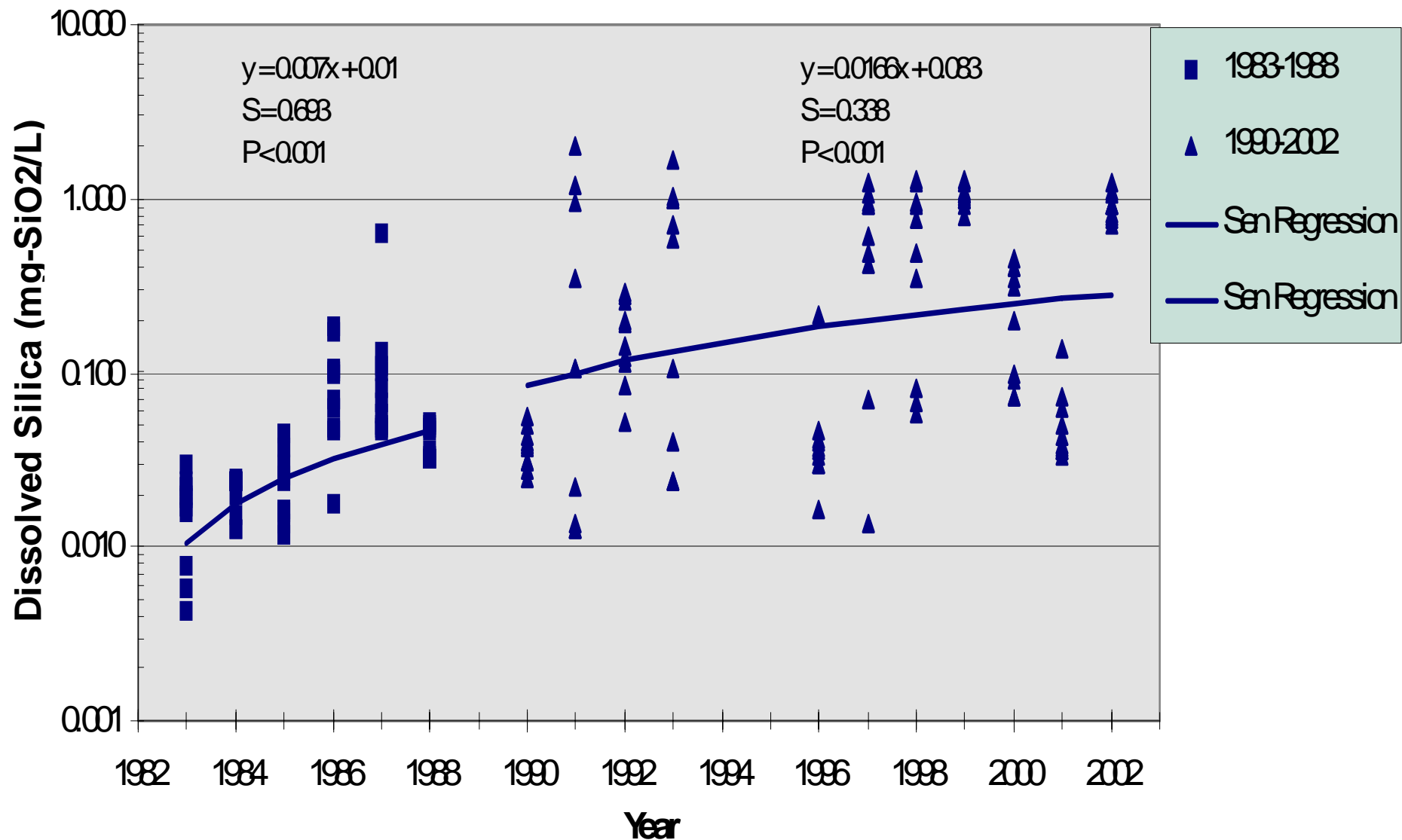
Lake Erie Monitoring Stations



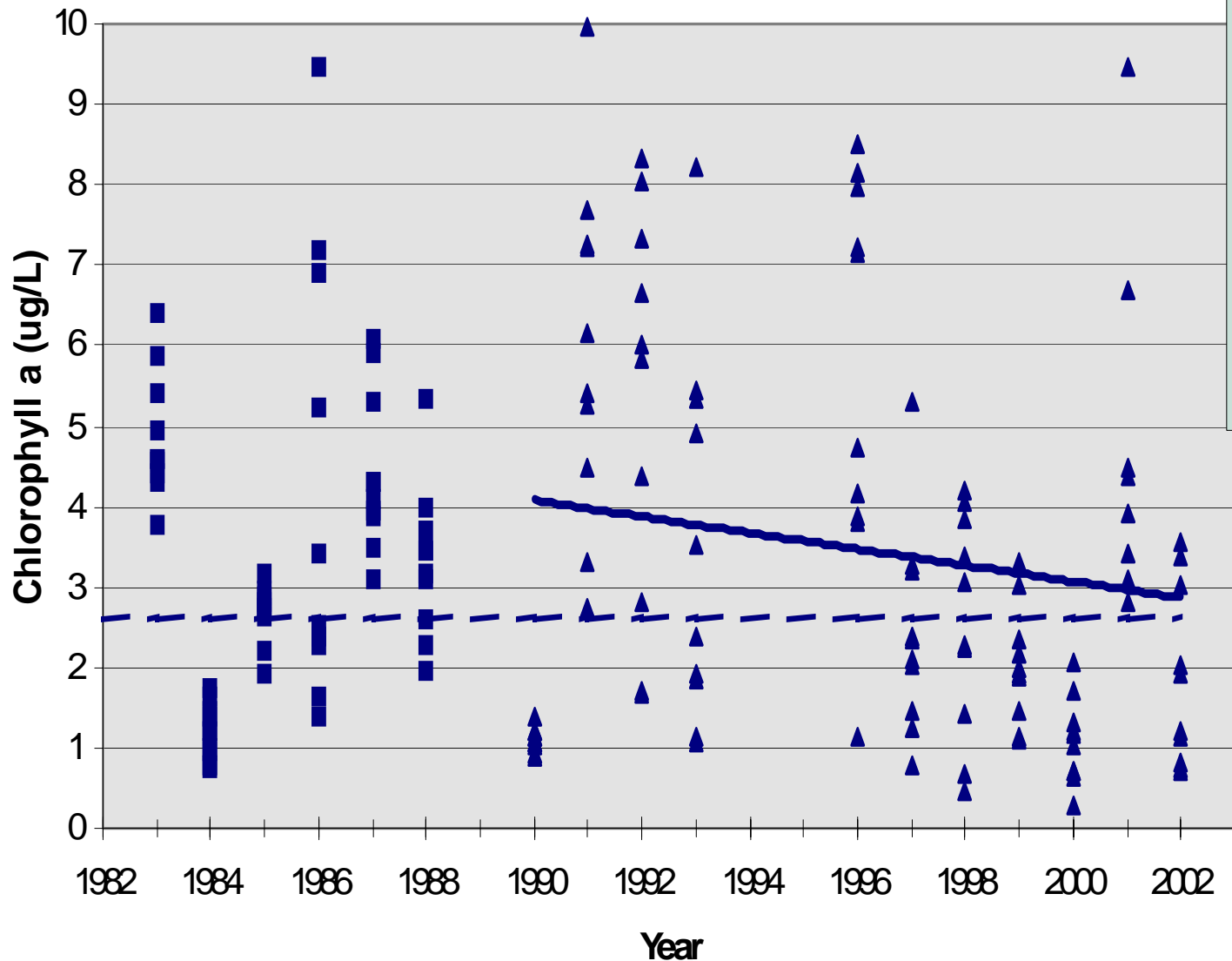
Central Lake Erie Total Phosphorus Spring Station Means



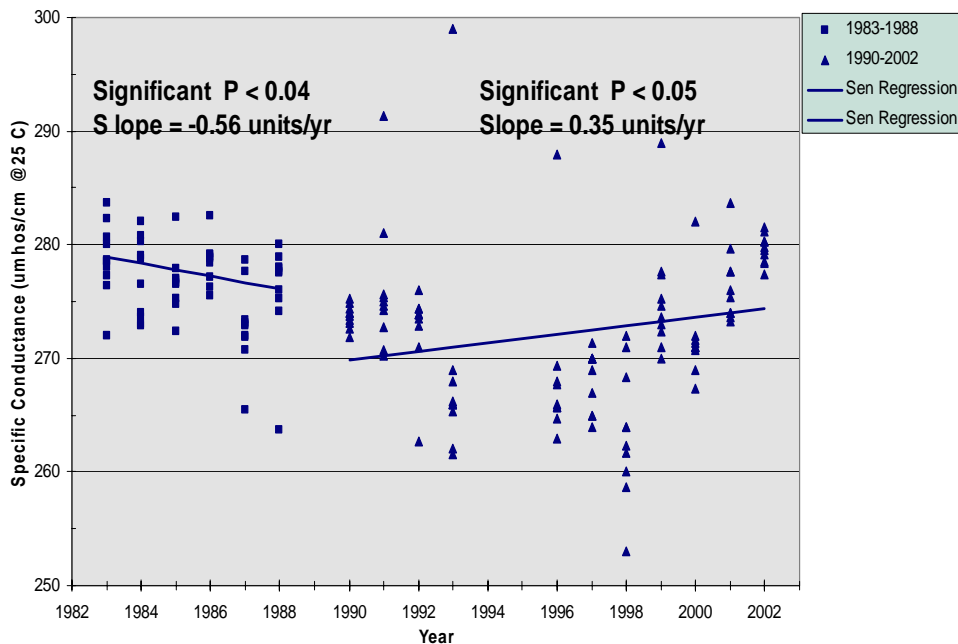
Central Lake Erie Dissolved Silica Spring Station Means



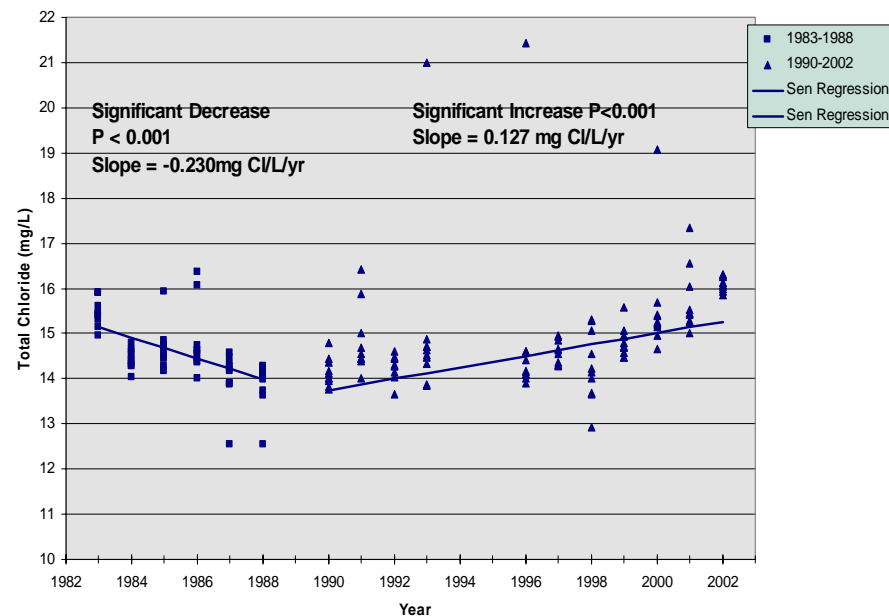
Central Lake Erie Chlorophyll a Spring Station Means



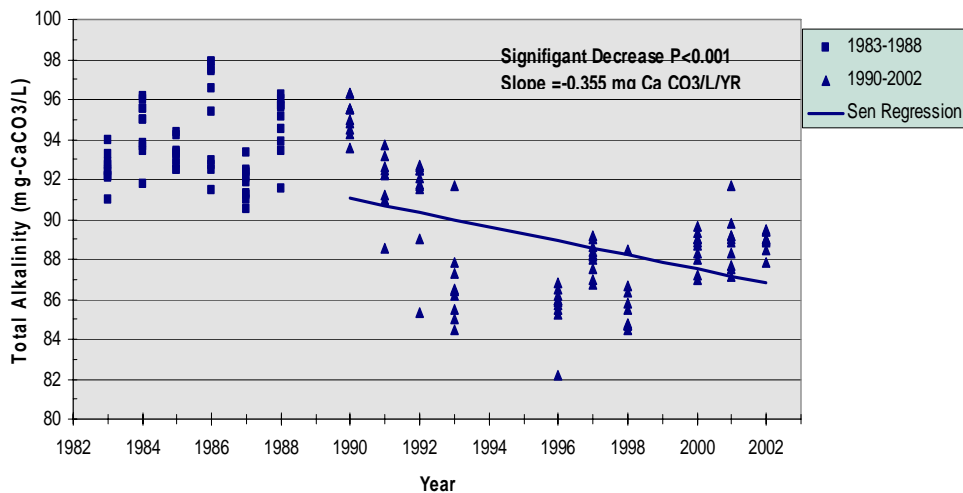
Central Lake Erie Specific Conductance
Spring Station Means



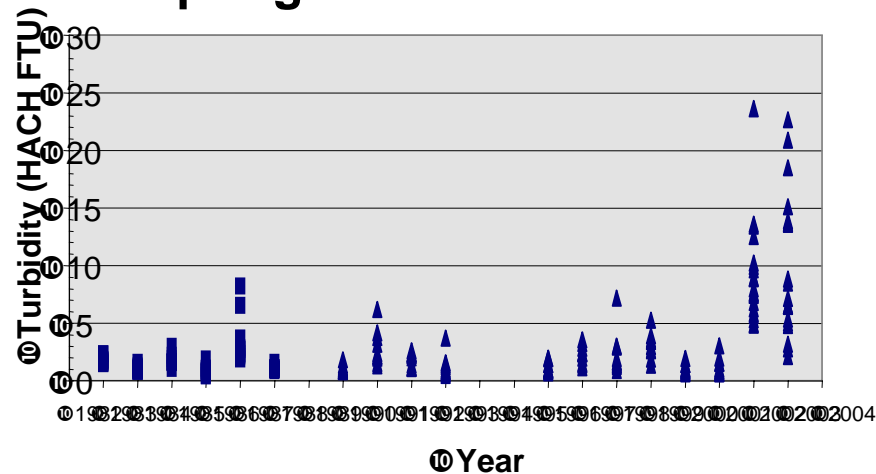
Central Lake Erie Total Chloride
Spring Station Means



Central Lake Erie Total Alkalinity
Spring Station Means

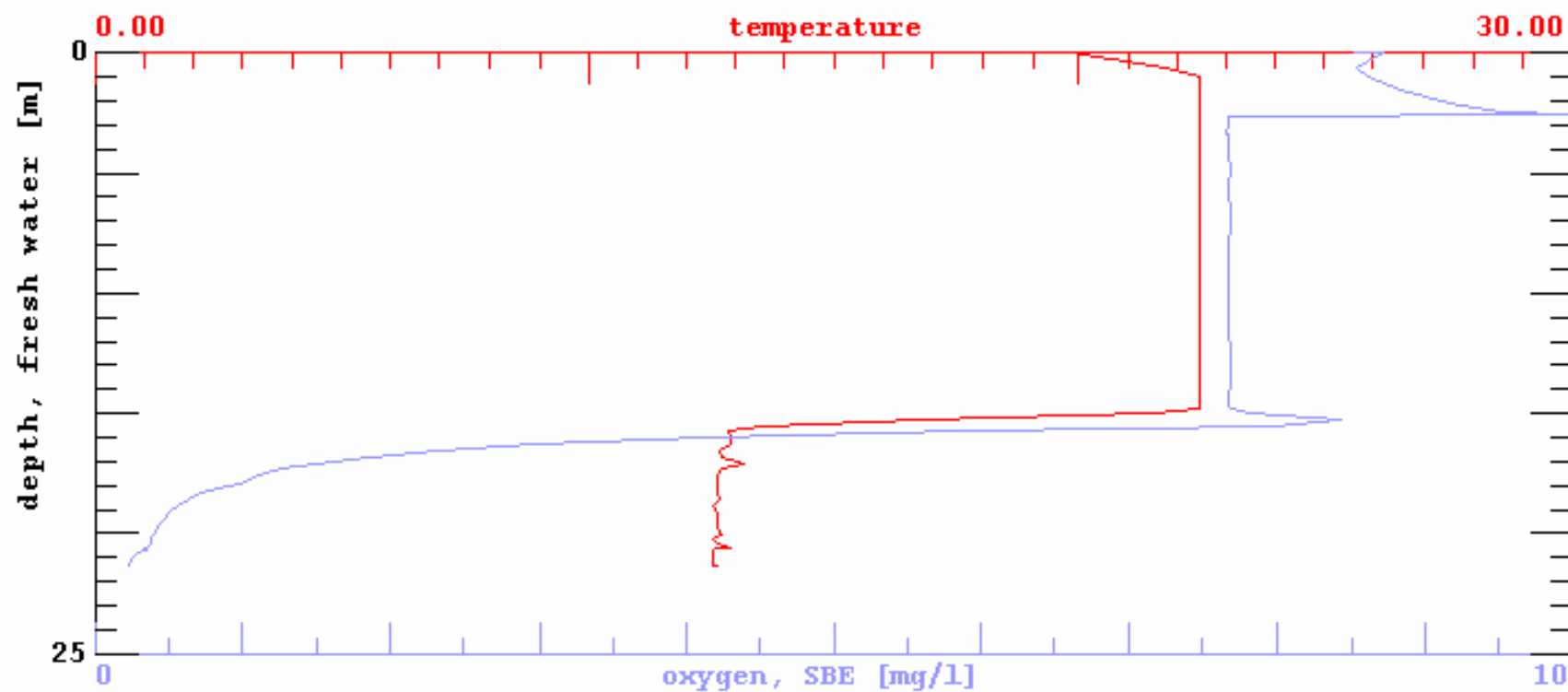


Central Lake Erie Turbidity
Spring Station Means

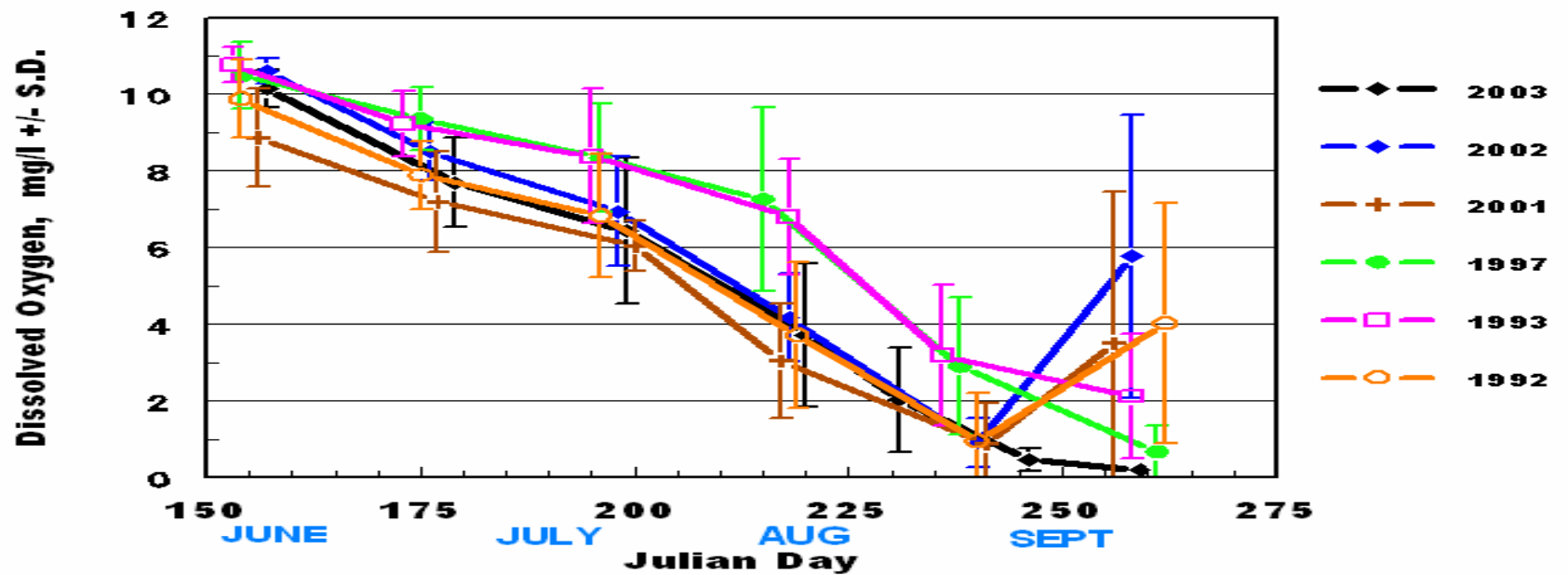




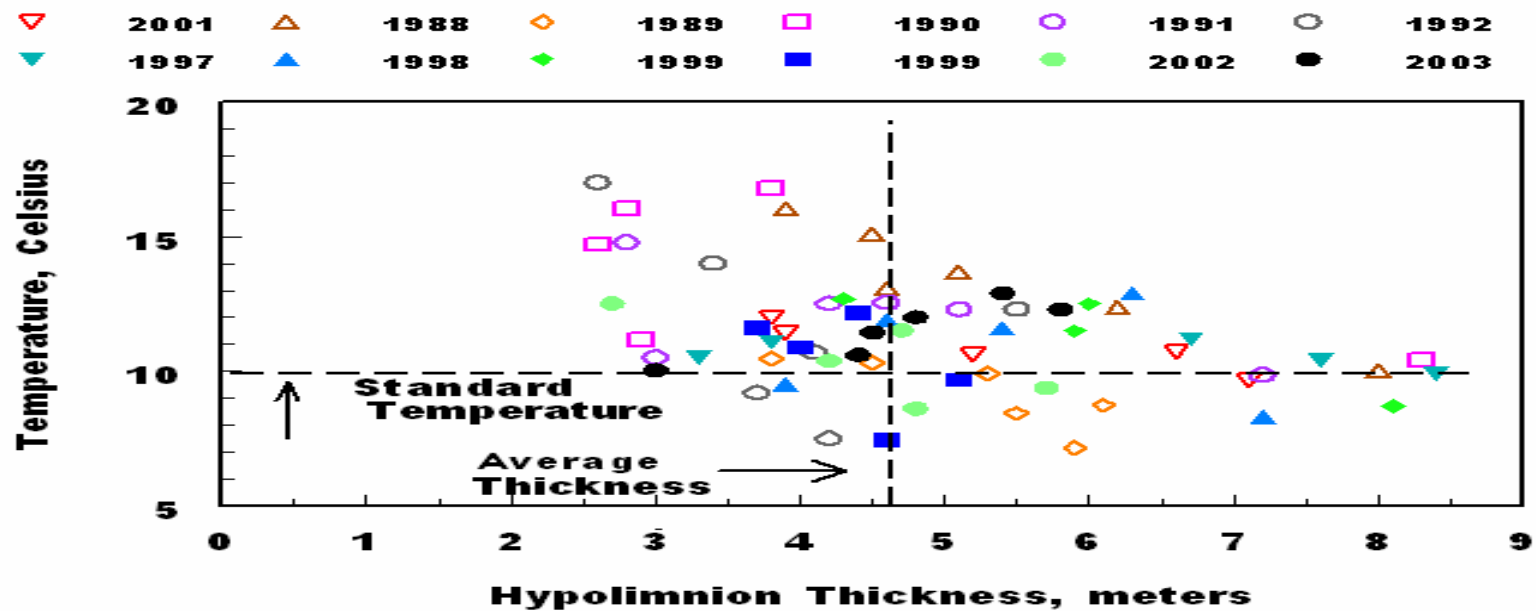
er3603D06.dat :



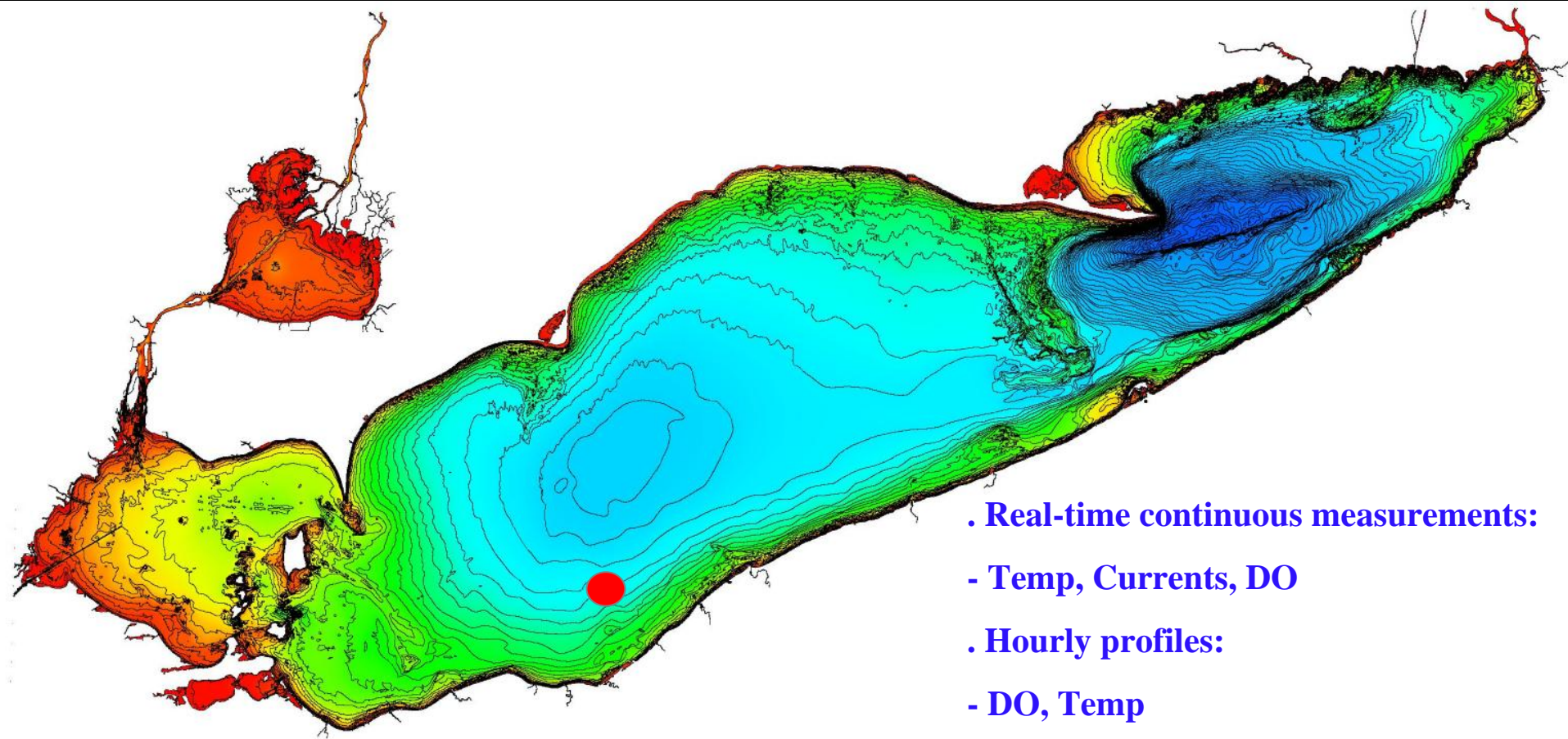
Dissolved Oxygen Concentration Lake Erie Central Basin Hypolimnion

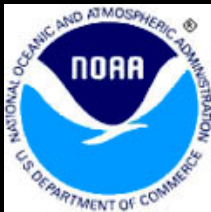


Thickness and Temperature of Bottom Water Layer



Lake Erie Prototype Observation Buoy



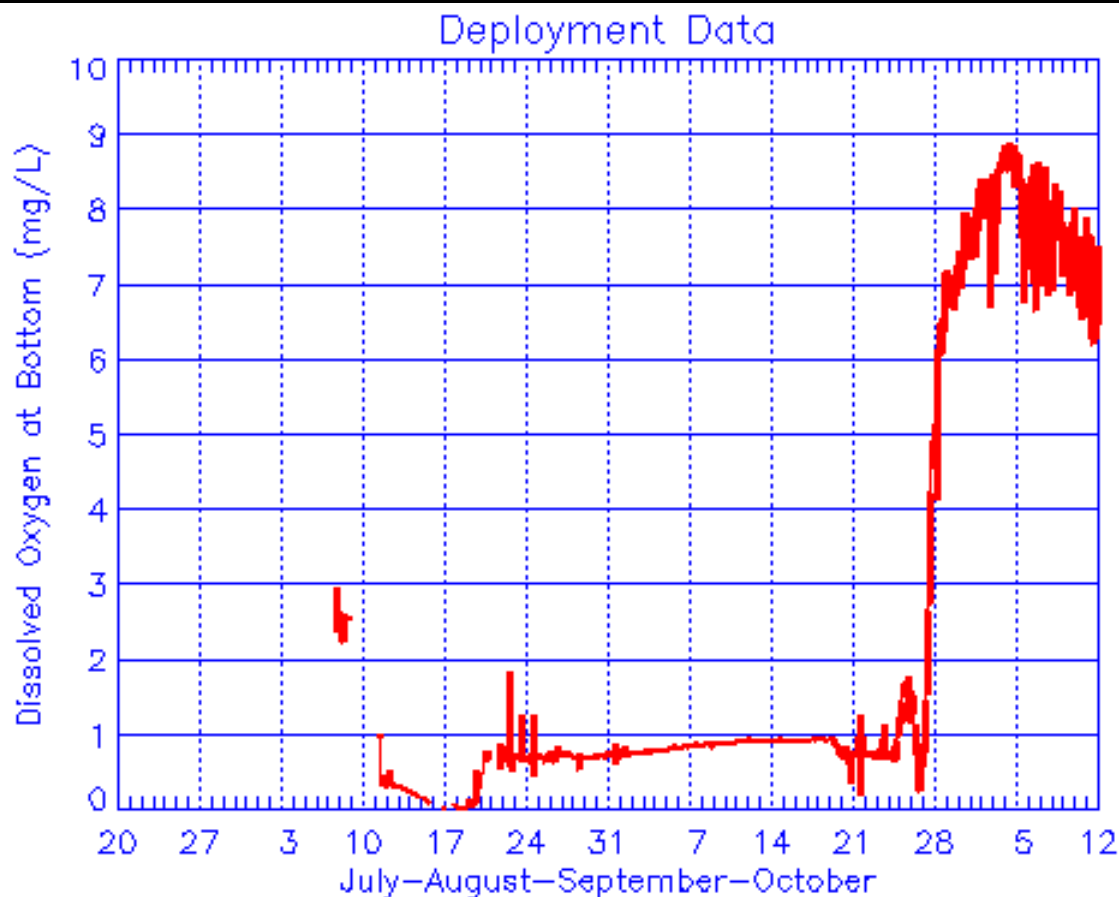


Dissolved Oxygen

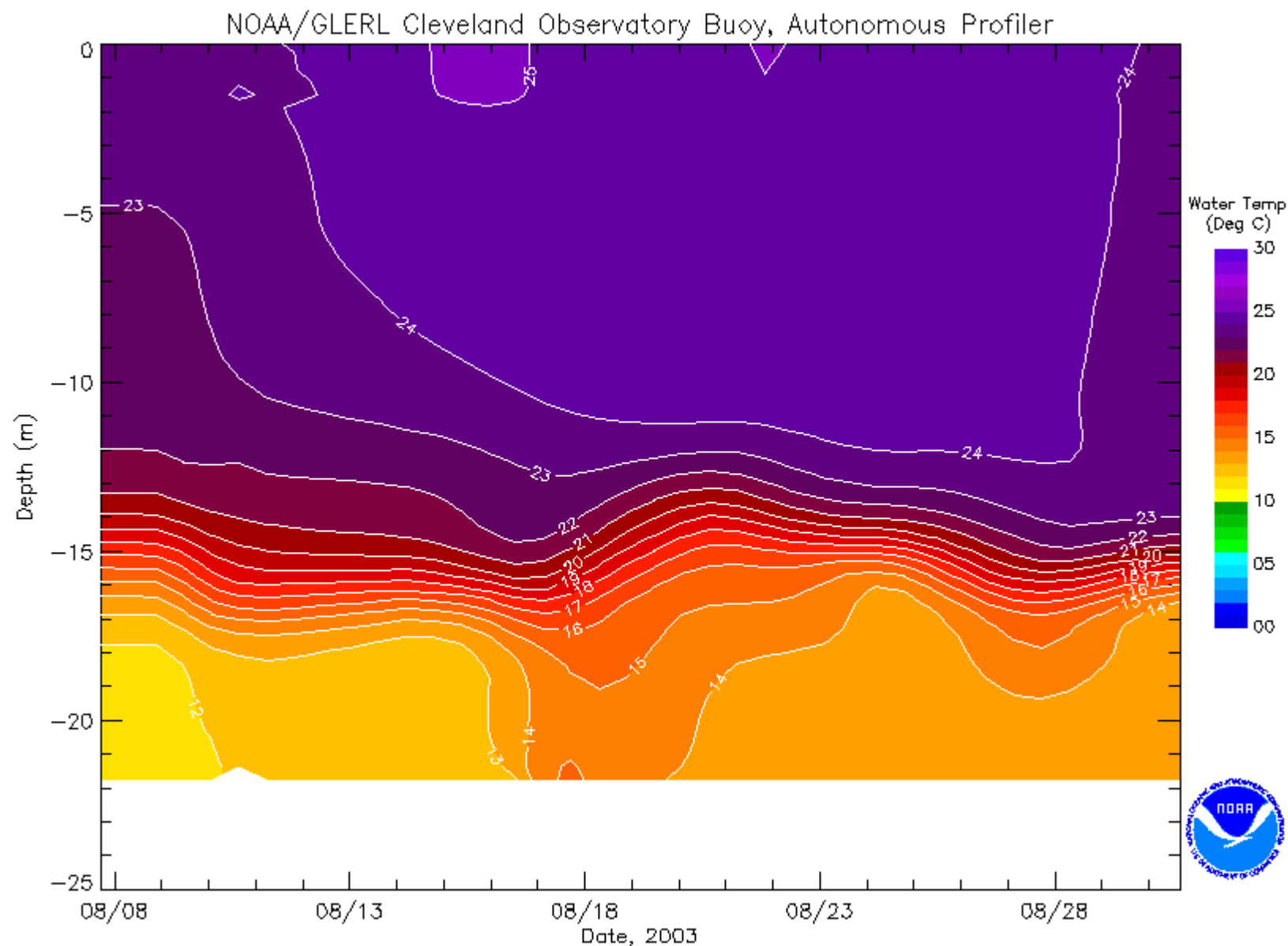
NOAA/GLERL Real-Time Observation Buoy

Located 15 mi North of Cleveland. Depth 21 meters

41 43.604' / 81 42.553'



Temperature Contour Plot, August 2003





Scientists have discovered that the moon is moving away from the earth at a tiny yet measurable distance every year. If you do the math, you can calculate that 85 million years ago the moon was orbiting the earth at a distance of about 35 feet from the earth's surface. This would explain the death of the dinosaurs. The tallest ones, anyway....

There's
Science
and
There's
Sound
Science...



Keep 'Em Great!