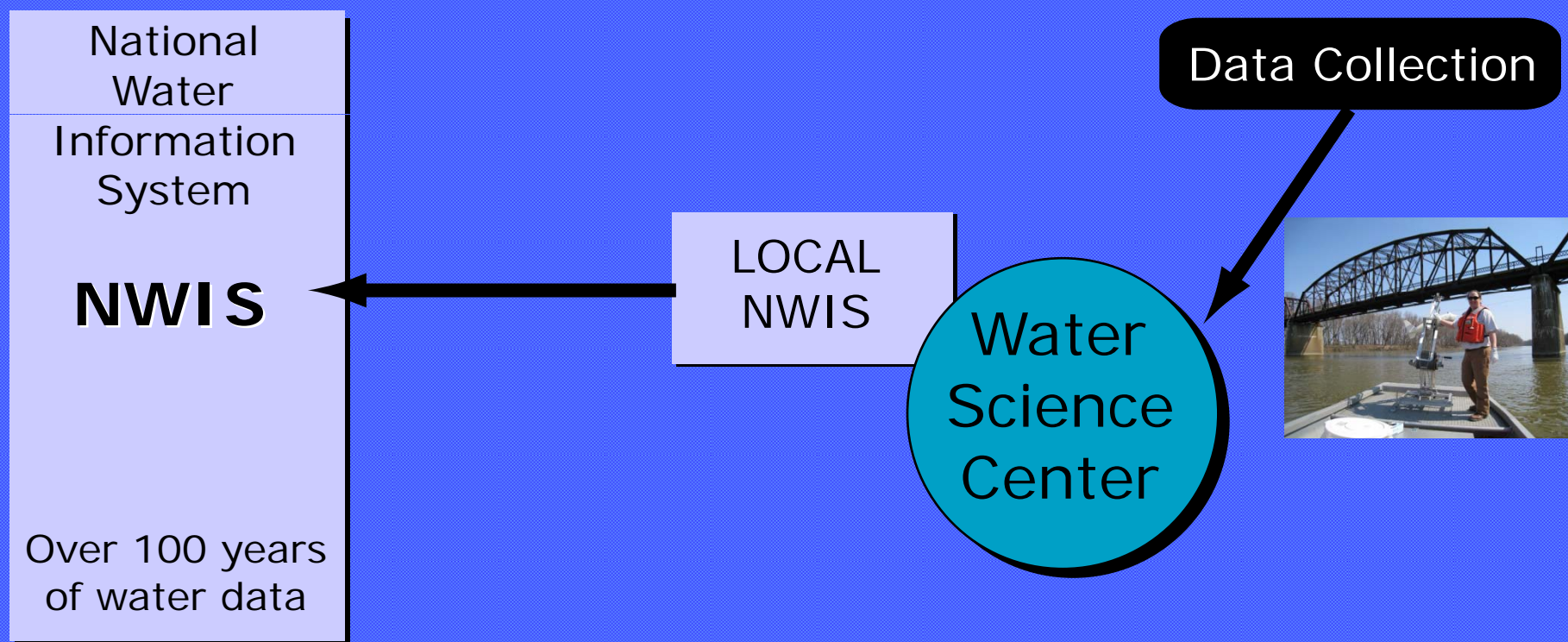


# Where's the Data? Improvements in Access to USGS Water Data

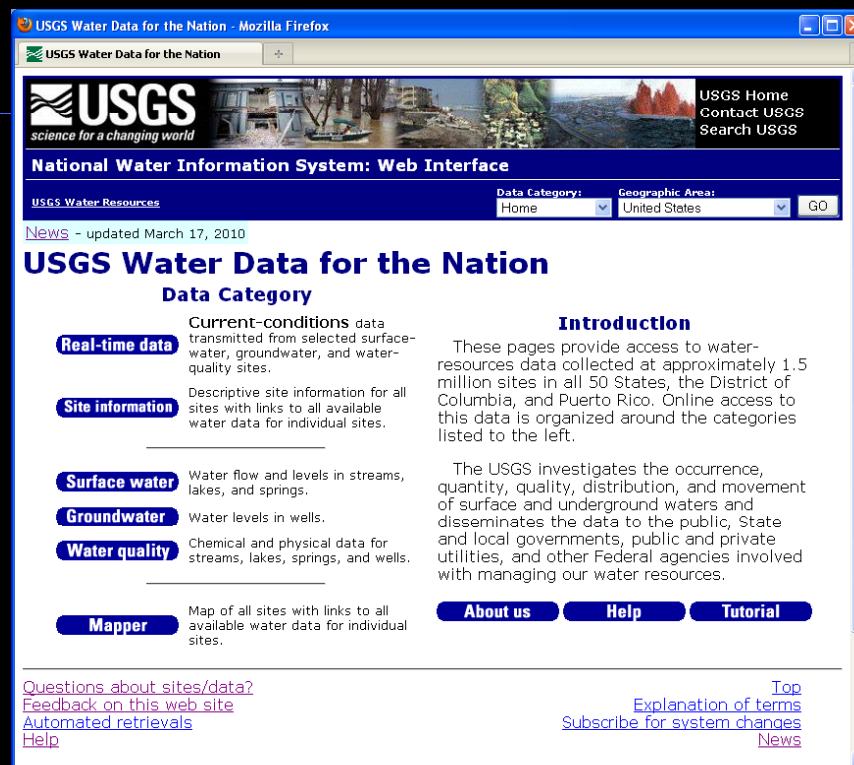
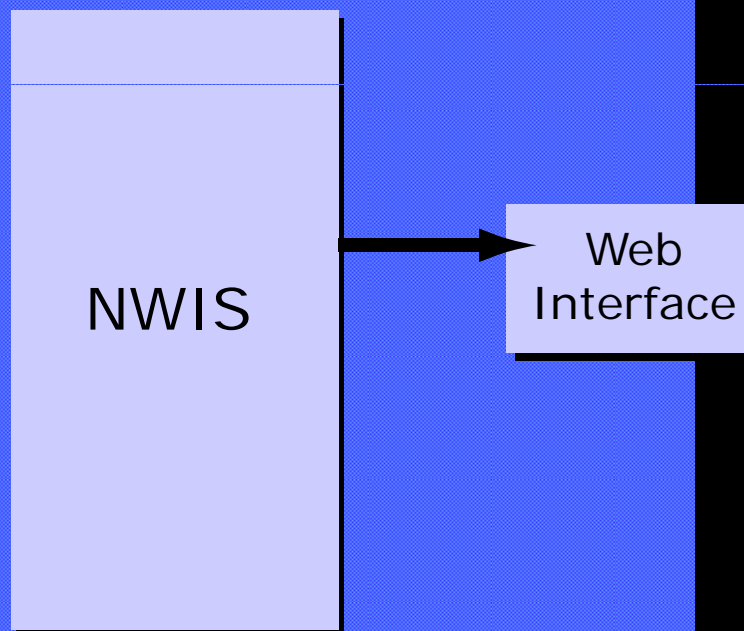
**Gary T. Fisher, Baltimore, MD**  
**Yvonne E. Stoker, Tampa, FL**

# Water-Resources Data Collection



# Data Distribution - NWIS

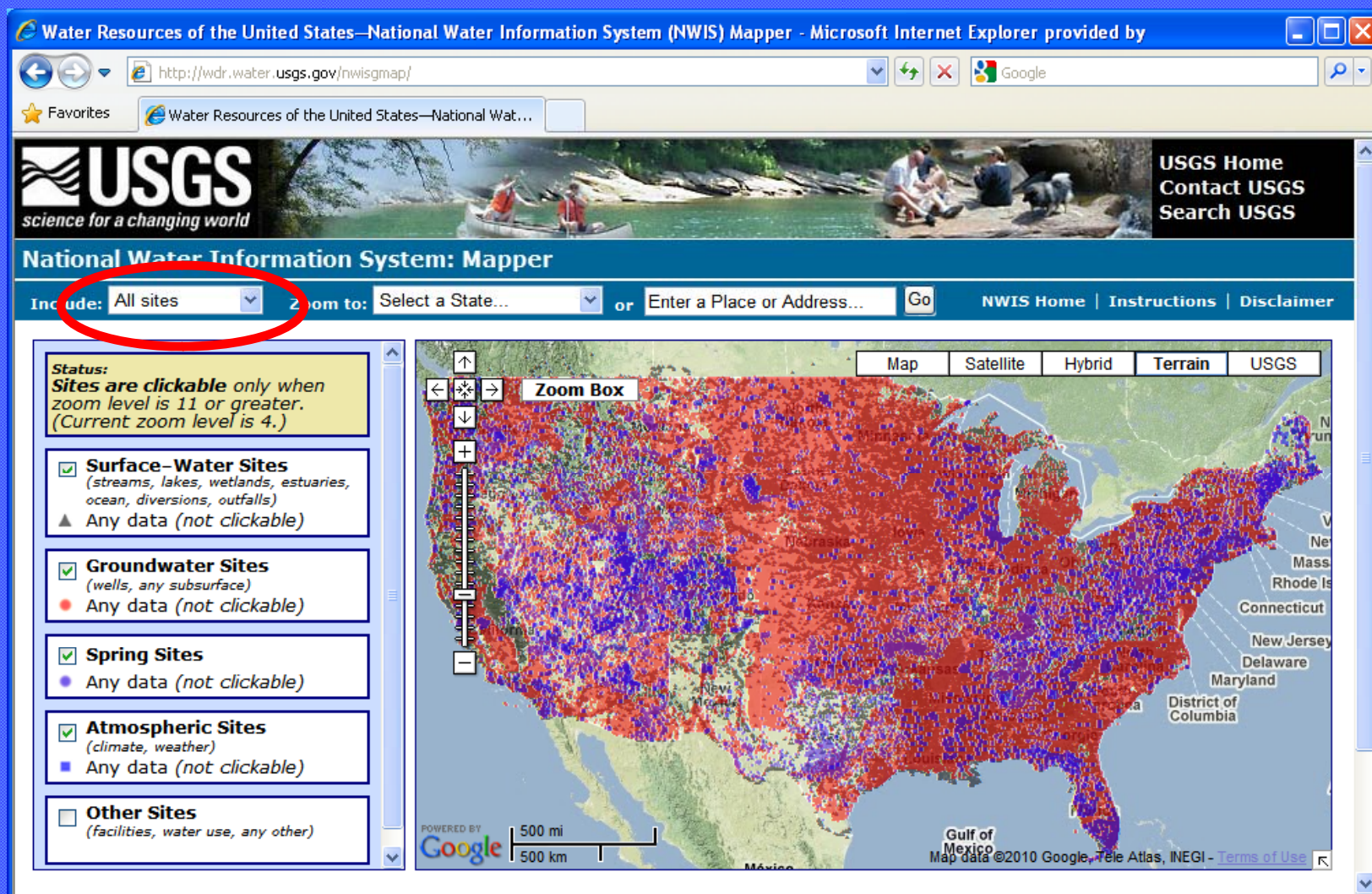
<http://waterdata.usgs.gov/nwis>



The screenshot shows the "USGS Water Data for the Nation" web interface in a Mozilla Firefox browser window. The page features the USGS logo and tagline "science for a changing world". Below the header, there's a navigation bar with "USGS Water Resources" and search filters for "Data Category" (set to "Home") and "Geographic Area" (set to "United States"). A "GO" button is present. The main content area is titled "USGS Water Data for the Nation" and includes a "Data Category" section with links for "Real-time data", "Site information", "Surface water", "Groundwater", "Water quality", and "Mapper". Each link has a brief description of the data type. To the right, there's an "Introduction" section explaining the scope of the data (approximately 1.5 million sites in all 50 States, the District of Columbia, and Puerto Rico). At the bottom, there are links for "About us", "Help", and "Tutorial", as well as a "Questions about sites/data?" section with links for "Feedback on this web site", "Automated retrievals", and "Help".

## USGS Water-Resources Data

- 1.5 million sites
  - 377,000 sites with water-quality data
  - 4.8 million water-quality samples
  - 89 million discrete results





## NWISWeb: New and Enhanced Features

- Redesigned site types
- Search by parameter code
- Search by parameter group
- NWIS Mapper
- Time zone included with real-time data
- 120 days of real-time values

## Redesigned Site Types

- Indicates location in hydrologic cycle
- Primary + optional secondary site types
  - Stream
    - Canal
    - Ditch
    - Tidal
- Aligns with USEPA site types

## Search by Parameter Code

- USGS Parameter Code
  - Help finding codes:
    - Common name
    - American Chemical Society Registry Number
    - USEPA Substance Registry Services Name
  - Interactive or file submission



USGS Water Quality Samples for Dist. of Columbia: Sample Data - Microsoft Internet Explorer provided by MD-DC-DE WSC

http://nwis.waterdata.usgs.gov/dc/nwis/qwdata

USGS Water Quality Samples for Dist. of Columbia: Sa...

**USGS**  
science for a changing world

USGS Home  
Contact USGS  
Search USGS

**National Water Information System: Web Interface**

USGS Water Resources

Data Category: Water Quality

Geographic Area: Dist. of Columbia

GO

[News](#) - updated March 17, 2010

## Water Quality Samples for Dist. of Columbia

Some complex retrievals may take a few minutes.

### Choose Site Selection Criteria

Found 135 sites in Dist. of Columbia with water-quality data. Choose from the following criteria to constrain the number of sites selected.

Site -- Location --	Site -- Identifier --	Site -- Attribute --	Data -- Attribute * --
<input type="checkbox"/> County	<input type="checkbox"/> Site Name	<input type="checkbox"/> Site type	<input type="checkbox"/> Number of observations
<input type="checkbox"/> Hydrologic Unit	<input type="checkbox"/> Site Number	<input type="checkbox"/> Drainage area	<input type="checkbox"/> Period of record
<input type="checkbox"/> Lat-Long box	<input type="checkbox"/> Multiple Site Numbers	<input type="checkbox"/> Well depth	<input type="checkbox"/> Sample medium type
	<input type="checkbox"/> Agency Code	<input type="checkbox"/> Hole depth	<input checked="" type="checkbox"/> Parameter Codes
	<input type="checkbox"/> File of Site Numbers	<input type="checkbox"/> National aquifer (by code)	<input type="checkbox"/> File of Parameter Codes
		<input type="checkbox"/> National aquifer (by name)	<input type="checkbox"/> Parameter groupings
		<input type="checkbox"/> Local aquifer (by code)	
		<input type="checkbox"/> Local aquifer (by name)	

\* Selection of more than one data attribute will include all samples that meet all conditions selected.

USGS Water Quality Samples for Dist. of Columbia: Sample Data - Microsoft Internet Explorer provided by MD-DC-DE WSC

http://nwis.waterdata.usgs.gov/dc/nwis/qwdata?search\_criteria=multiple\_parameter\_cds&submitted\_fi... Google

USGS Water Quality Samples for Dist. of Columbia: Sa...

## Water Quality Samples for Dist. of Columbia

Some complex retrievals may take a few minutes.

**Select sites and/or samples which meet the following criteria:**  
Define one or more values for each of the following site-selection criteria: --- or select [new criteria](#)

☒ **Parameter Codes** -- enter one or more parameter codes (Limit: 200 codes) ([Help finding a code](#))

00631

**Choose Output Format**  
**Display Summary of Selected Sites**  
Choose one of the following options for displaying descriptions of the sites meeting the criteria above:

☒ Table of sites sorted by Site number grouped by  
☐ Scroll list of sites -- allows selection of data for multiple sites  
☐ Brief descriptions -- allows selection of data for multiple sites  
☐ Site-description information displayed in table format

Agency  
Site identification number  
Site name  
Site type

<--Select fields to include in site-description output

☐ Save file of selected sites to local disk for future upload

**Retrieve Water-Quality Samples for Selected Sites**

USGS Water Quality Samples -- 69 sites found - Microsoft Internet Explorer provided by MD-DC-DE WSC

http://nwis.waterdata.usgs.gov/dc/nwis/qwdata?multiple\_parameter\_cds=00631&format=station\_list&

USGS Water Quality Samples -- 69 sites found

## Water Quality Samples for Dist. of Columbia

Some complex retrievals may take a few minutes.

### Site Selection Results -- 69 sites found

Parameter codes = 00631  
Minimum number of samples = 1

[Save file of selected sites](#) to local disk for future upload

Data for individual sites can be obtained by selecting the site number below

Agency	Site Number	Site Name	Period of Record		
			Begin Date	End Date	Samples
USGS	<a href="#">01646563</a>	MILL CREEK TRIB NR DALECARLIA RES AT WASHINGTON DC	2007-12-10	2007-12-10	1
USGS	<a href="#">01646565</a>	EAST CREEK NR DALECARLIA RES AT WASHINGTON, DC	2006-08-08	2007-12-10	2
USGS	<a href="#">0164656550</a>	EAST CREEK TRIB NR DALECARLIA RES AT WASHINGTON DC	2007-12-10	2007-12-10	1
USGS	<a href="#">01646566</a>	EAST CREEK AT DALECARLIA RES AT WASHINGTON, DC	2006-08-08	2007-12-10	2
USGS	<a href="#">01647505</a>	POTOMAC RIVER TRIBUTARY AT WASHINGTON, DC	1994-09-21	1994-09-21	1
USGS	<a href="#">01647595</a>	POTOMAC RIVER AT KEY BRIDGE AT WASHINGTON, DC	2004-06-14	2009-12-07	9
USGS	<a href="#">01647998</a>	ROCK CREEK BELOW WEST BEACH DRIVE WASHINGTON, DC	1999-06-23	1999-06-23	1
USGS	<a href="#">01648000</a>	ROCK CREEK AT SHERRILL DRIVE WASHINGTON, DC	1959-10-01	1999-08-18	149
USGS	<a href="#">01648004</a>	PINEHURST BRANCH AT OREGON AVENUE WASHINGTON, DC	1999-06-24	1999-06-24	1
USGS	<a href="#">01648005</a>	ROCK CREEK TRIBUTARY AT GOLF COURSE	1999-06-24	2004-05-24	1

USGS Water Quality Samples -- 1 sites found - Microsoft Internet Explorer provided by MD-DC-DE WSC

http://nwis.waterdata.usgs.gov/dc/nwis/qwdata/?site\_no=01647595&multiple\_parameter\_cds={ } Google

USGS Water Quality Samples -- 1 sites found

### Choose Output Format

#### Retrieve Water-Quality Samples for Selected Sites

Choose one of the following options for displaying data for the sites meeting the criteria above:

☐ Parameter Group Period of Record table

☒ Retrieve data from:  to:  (YYYY-MM-DD -- Blank = all data)

☒ Retrieve sample time and time zone ☒ as stored ☐ in UTC

☒ Samples and parameters to include:

☒ Only samples that include site selection parameters (Count: 1) 00631

☐ All samples and all parameters

☐ Samples that include one or more of these parameters (Limit: 200 codes)

<--Find [parameter codes](#)

☐ Samples that include one or more of the parameters in a file

Enter the full pathname of a file containing parameter codes. (Limit: 200 codes)

☒ **Table of data**

☐ Inventory of water quality data

☐ Tab-separated inventory of water-quality data  \*

☐ Tab-separated data

\* Save compressed files with a .gz file extension.

[Questions about sites/data?](#)

[Feedback on this web site](#)

[Automated retrievals](#)

[Help](#)

[Top](#)

[Explanation of terms](#)

[Subscribe for system changes](#)

[News](#)

USGS 01647595 POTOMAC RIVER AT KEY BRIDGE AT WASHINGTON, DC Water Quality Data - Microsoft Internet Explorer provided by MD-DC-

http://nwis.waterdata.usgs.gov/dc/nwis/qwdata/?site\_no=01647595&agency\_cd=USGS&TZoutput=08

USGS 01647595 POTOMAC RIVER AT KEY BRIDGE AT ...

### USGS 01647595 POTOMAC RIVER AT KEY BRIDGE AT WASHINGTON, DC

Available data for this site: Water-Quality: Field/Lab samples

District Of Columbia County, Dist. of Columbia  
Hydrologic Unit Code 02070010  
Latitude 38°54'08", Longitude 77°04'11" NAD27

#### Output formats

- [Parameter Group Period of Record table](#)
- [Inventory of available water-quality data for printing](#)
- [Inventory of water-quality data with retrieval](#)
- [Tab-separated data, one result per row](#)
- [Tab-separated data one sample per row with remark codes combined with values](#)
- [Tab-separated data one sample per row with tab-delimiter for remark codes](#)
- [Reselect output format](#)

Sample Datetime	Time datum	Time datum reliability code	Sample Medium Code	Agency Collecting Sample, Code	Nitrate + nitrite water, fltrd, mg/L as N (00631)
2004-06-14 12:00	EST	K	WS	USGS-WRD	1.71
2005-03-14 12:00	EST	K	WS	USGS-WRD	1.33
2006-12-11 10:00	EST	K	WS		1.78
2007-06-18 09:30	EST	K	WS		0.89
2007-12-10 10:45	EST	K	WS	USGS	1.10
2008-06-09 10:00	EST	K	WS		0.98
2008-12-15 09:30	EST	K	WS	USGS	1.29
2009-09-14 10:30	EST	K	WS		0.39

## Search by Parameter Group

- Information
- Physical
- Inorganics, Major, Metals
- Inorganics, Major Non-metals
- Nutrient
- Microbiological
- Biological
- Inorganics, Minor, metals
- Inorganics, Minor, Non-metals
- Organics, pesticide
- Organics, PCBs
- Organics, other
- Radiochemistry
- Stable Isotopes
- Sediment
- Population/Community
- Habitat
- Toxicity
- Other



USGS Water Quality Samples for Dist. of Columbia: Sample Data - Microsoft Internet Explorer provided by MD-DC-DE WSC

http://nwis.waterdata.usgs.gov/dc/nwis/qwdata

USGS Water Quality Samples for Dist. of Columbia: Sa...

**USGS**  
science for a changing world

USGS Home  
Contact USGS  
Search USGS

**National Water Information System: Web Interface**

USGS Water Resources

Data Category: Water Quality

Geographic Area: Dist. of Columbia

GO

News - updated March 17, 2010

## Water Quality Samples for Dist. of Columbia

Some complex retrievals may take a few minutes.

### Choose Site Selection Criteria

Found 135 sites in Dist. of Columbia with water-quality data. Choose from the following criteria to constrain the number of sites selected.

Site -- Location --	Site -- Identifier --	Site -- Attribute --	Data -- Attribute * --
<input type="checkbox"/> County	<input type="checkbox"/> Site Name	<input type="checkbox"/> Site type	<input type="checkbox"/> Number of observations
<input type="checkbox"/> Hydrologic Unit	<input type="checkbox"/> Site Number	<input type="checkbox"/> Drainage area	<input type="checkbox"/> Period of record
<input type="checkbox"/> Lat-Long box	<input type="checkbox"/> Multiple Site Numbers	<input type="checkbox"/> Well depth	<input type="checkbox"/> Sample medium type
	<input type="checkbox"/> Agency Code	<input type="checkbox"/> Hole depth	<input type="checkbox"/> Parameter Codes
	<input type="checkbox"/> File of Site Numbers	<input type="checkbox"/> National aquifer (by code)	<input type="checkbox"/> File of Parameter Codes
		<input type="checkbox"/> National aquifer (by name)	<input checked="" type="checkbox"/> Parameter groupings
		<input type="checkbox"/> Local aquifer (by code)	
		<input type="checkbox"/> Local aquifer (by name)	

\* Selection of more than one data attribute will include all samples that meet all conditions selected.

Submit Reset

USGS Water Quality Samples for Dist. of Columbia: Sample Data - Microsoft Internet Explorer provided by MD-DC-DE WSC

http://nwis.waterdata.usgs.gov/dc/nwis/qwdata?search\_criteria=param\_group&submitted\_form=introc

USGS Water Quality Samples for Dist. of Columbia: Sa...

## Water Quality Samples for Dist. of Columbia

Some complex retrievals may take a few minutes.

**Select sites and/or samples which meet the following criteria:**  
Define one or more values for each of the following site-selection criteria: --- or select [new criteria](#)

☒ **Parameter groupings** -- select one or more

All -- include all parameter groups  
 Information  
**Physical**  
 Inorganics Major Metals  
 Inorganics Major Nutrients  
 Nutrient

**Choose Output Format**  
**Display Summary of Selected Sites**  
 Choose one of the following options for displaying descriptions of the sites meeting the criteria above:

☒ Table of sites sorted by Site number grouped by  
☐ Scroll list of sites -- allows selection of data for multiple sites  
☐ Brief descriptions -- allows selection of data for multiple sites  
☐ Site-description information displayed in table format

Agency  
 Site identification number  
 Site name  
 Site type

<--Select fields to include in site-description output

☐ Save file of selected sites to local disk for future upload

**Retrieve Water-Quality Samples for Selected Sites**

USGS Water Quality Samples -- 124 sites found - Microsoft Internet Explorer provided by MD-DC-DE WSC

http://nwis.waterdata.usgs.gov/dc/nwis/qwdata?param\_group=PHY&format=station\_list&sort\_key=sit

USGS Water Quality Samples -- 124 sites found

## Water Quality Samples for Dist. of Columbia

Some complex retrievals may take a few minutes.

### Site Selection Results -- 124 sites found

Parameter Groups = [PHY] Physical  
Minimum number of samples = 1

[Save file of selected sites](#) to local disk for future upload

Data for individual sites can be obtained by selecting the site number below

Agency	Site Number	Site Name	Period of Record		
			Begin Date	End Date	Samples
USGS	<a href="#">01646563</a>	MILL CREEK TRIB NR DALECARLIA RES AT WASHINGTON DC	2007-12-10	2007-12-10	1
USGS	<a href="#">01646565</a>	EAST CREEK NR DALECARLIA RES AT WASHINGTON, DC	2006-08-08	2007-12-10	2
USGS	<a href="#">0164656550</a>	EAST CREEK TRIB NR DALECARLIA RES AT WASHINGTON DC	2007-12-10	2007-12-10	1
USGS	<a href="#">01646566</a>	EAST CREEK AT DALECARLIA RES AT WASHINGTON, DC	2006-08-08	2007-12-10	2
USGS	<a href="#">01647505</a>	POTOMAC RIVER TRIBUTARY AT WASHINGTON, DC	1994-09-21	1994-09-21	1
USGS	<a href="#">01647595</a>	POTOMAC RIVER AT KEY BRIDGE AT WASHINGTON, DC	2004-06-14	2009-12-07	9
USGS	<a href="#">01647994</a>	ROCK CREEK AT MD/DC BOUNDARY AT WASHINGTON DC	2007-06-27	2007-06-27	3
USGS	<a href="#">01647996</a>	TRIB TO FENWICK BR AT RED BUD LANE, WASHINGTON DC	2007-06-27	2007-06-27	1
USGS	<a href="#">01647997</a>	PORTAL BRANCH AT NORTH PORTAL DR, WASHINGTON, DC	1999-08-19	2008-07-29	5
USGS	<a href="#">01647998</a>	FENWICK BRANCH ABOVE ROCK CREEK AT	2007-06-	2008-07-	-

USGS 01647595 POTOMAC RIVER AT KEY BRIDGE AT WASHINGTON, DC Water Quality Data - Microsoft Internet Explorer provided by MD-DC-

http://nwis.waterdata.usgs.gov/dc/nwis/qwdata/?site\_no=01647595&agency\_cd=USGS&TZoutput=08

USGS 01647595 POTOMAC RIVER AT KEY BRIDGE AT ...

**USGS 01647595 POTOMAC RIVER AT KEY BRIDGE AT WASHINGTON, DC**

Available data for this site: Water-Quality: Field/Lab samples GO

District Of Columbia County, Dist. of Columbia  
Hydrologic Unit Code 02070010  
Latitude 38°54'08", Longitude 77°04'11" NAD27

**Output formats**

- Parameter Group Period of Record table
- Inventory of available water-quality data for printing
- Inventory of water-quality data with retrieval
- Tab-separated data, one result per row
- Tab-separated data one sample per row with remark codes combined with values
- Tab-separated data one sample per row with tab-delimiter for remark codes
- Reselect output format

Sample Datetime	Time datum	Time datum reliability code	Sample Medium Code	Agency Collecting Sample, Code	Temperature, water, deg C (00010)	Agency analyzing sample, code (00028)	Project number (00029)	Specific conductance, wat unf uS/cm @ 25 degC (00095)	Hydrogen ion, water, unfltrd calcd, mg/L (00191)	Dissolved oxygen, mg (003)
2004-06-14 12:00	EST	K	WS	USGS-WRD		80020	11800			
2005-03-14 12:00	EST	K	WS	USGS-WRD		80020	11800	243	0.00017	
2006-12-11 10:00	EST	K	WS		3.0	80020	11800	284	0.00001	
2007-06-18 09:30	EST	K	WS		25.8			351	0.00002	
2007-12-10 10:45	EST	K	WS	USGS	3.8			460	0.00003	
2008-06-09 10:00	EST	K	WS					280	0.00001	

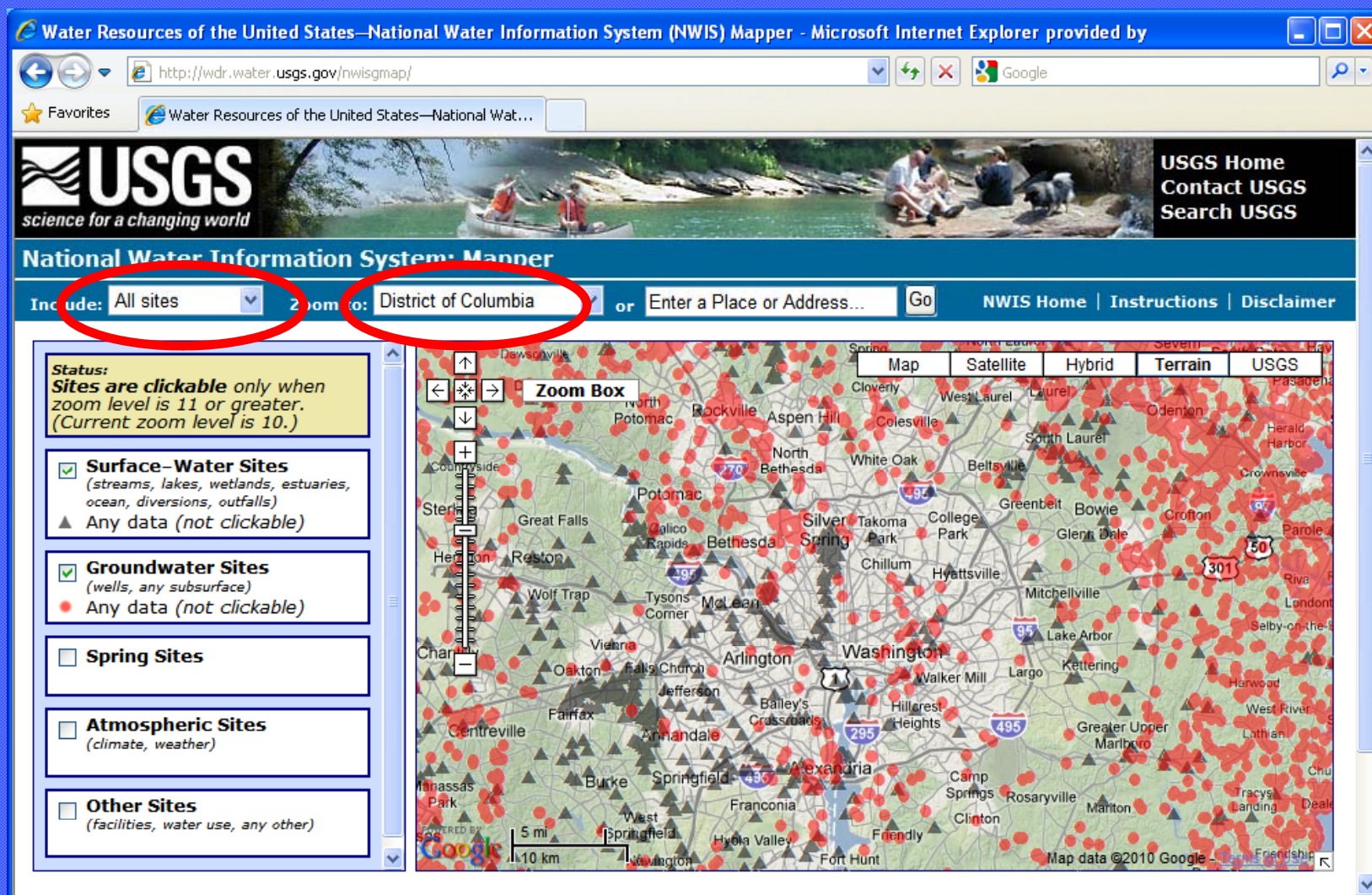
## NWIS Mapper

- Search by
  - Location (State, address)
  - One or more site types
  - Active, inactive, and real-time sites
- Multiple output options
  - Click on site and access data
  - List of sites
  - KML file output

## NWIS Mapper

- Multiple map overlays
  - USGS topographic map
  - Satellite image
  - Street map
  - Terrain map







Water Resources of the United States—National Water Information System (NWIS) Mapper - Microsoft Internet Explorer provided by

http://wdr.water.usgs.gov/nwisgmap/

USGS Home  
Contact USGS  
Search USGS

**National Water Information System: Mapper**

Include: **Active sites** Zoom to: District of Columbia or Enter a Place or Address... Go NWIS Home | Instructions | Disclaimer

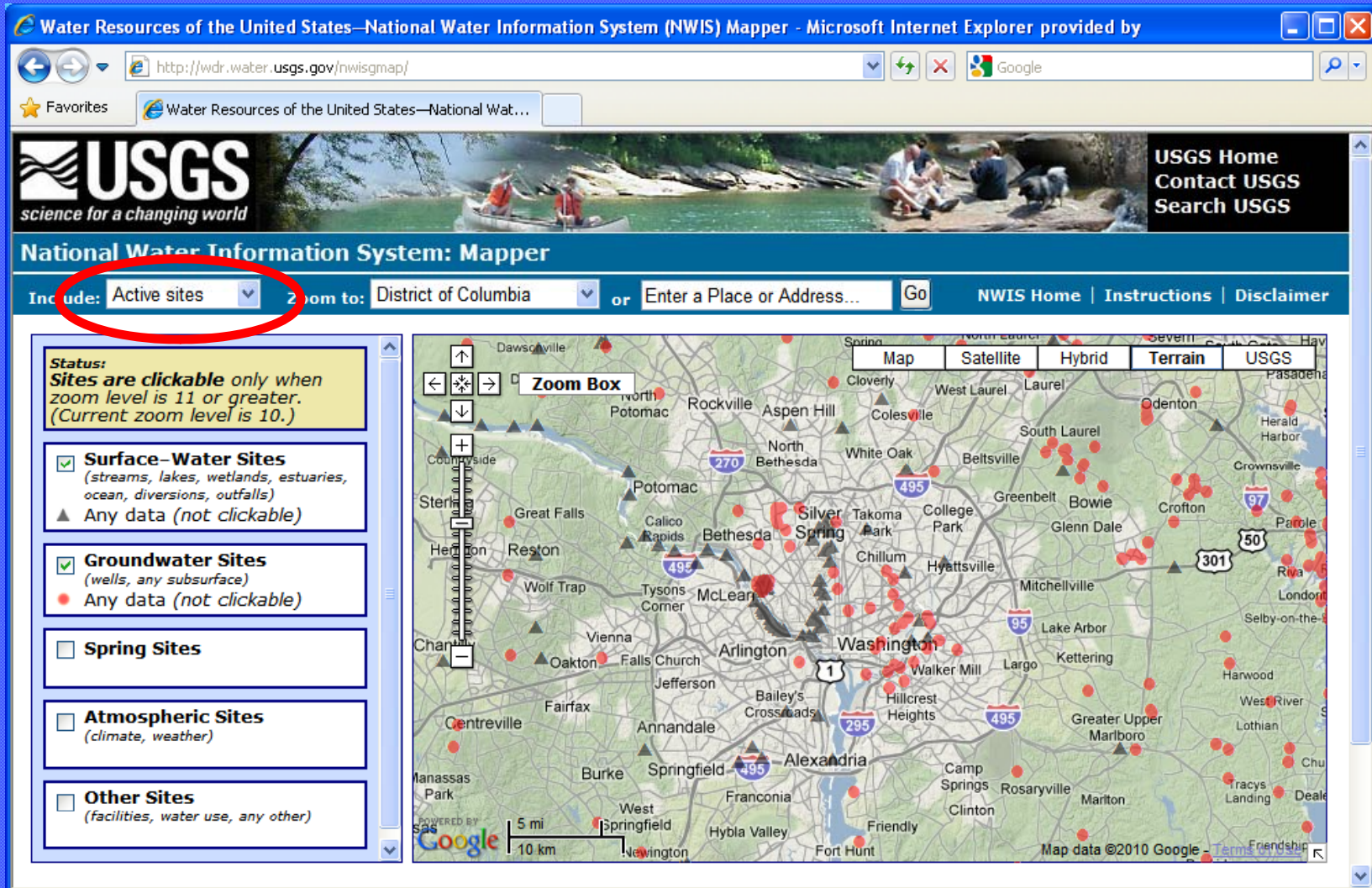
**Status:**  
Sites are clickable only when zoom level is 11 or greater. (Current zoom level is 10.)

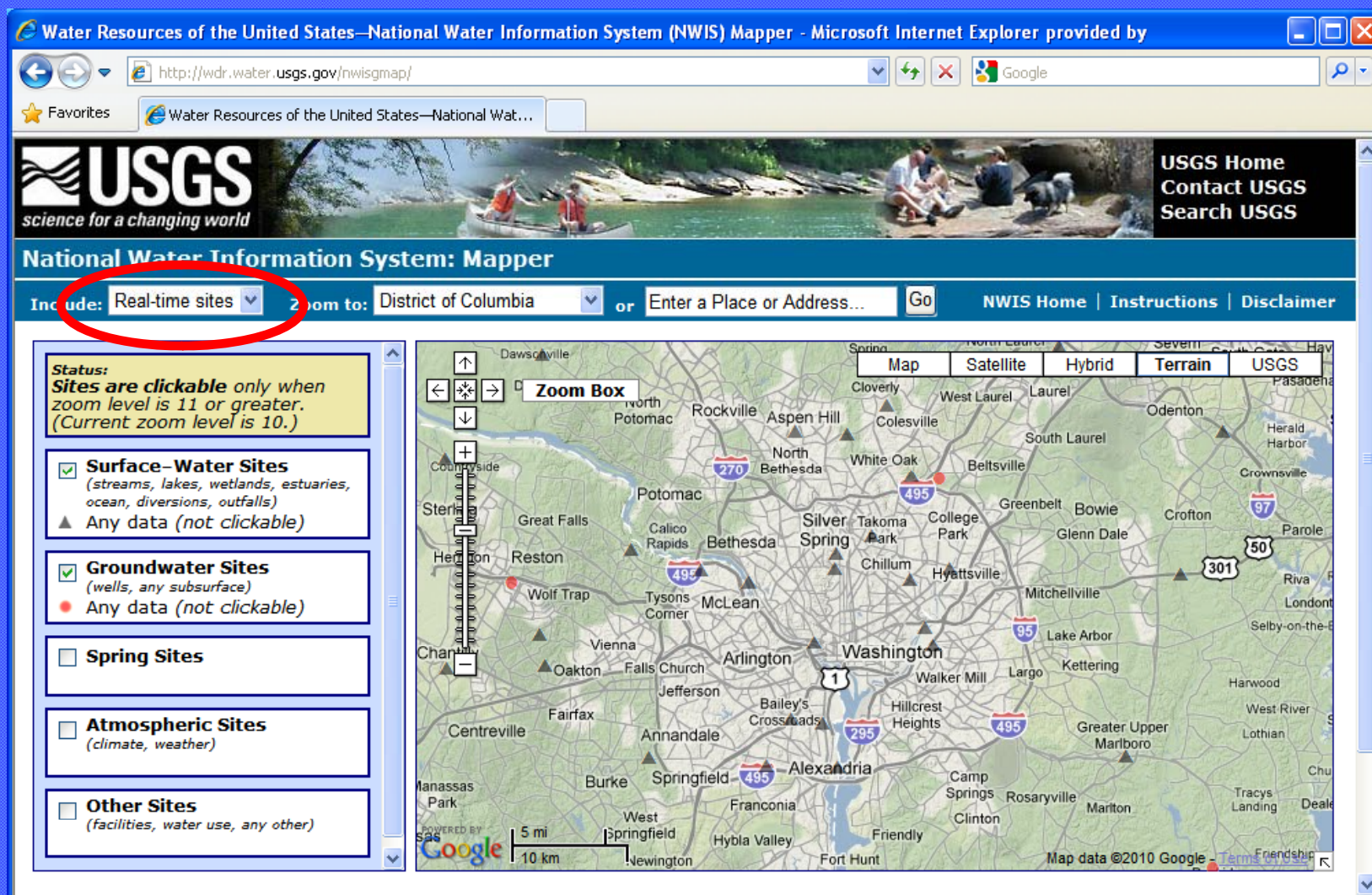
- ☒ **Surface-Water Sites**  
(streams, lakes, wetlands, estuaries, ocean, diversions, outfalls)  
▲ Any data (not clickable)
- ☒ **Groundwater Sites**  
(wells, any subsurface)  
● Any data (not clickable)
- ☐ **Spring Sites**
- ☐ **Atmospheric Sites**  
(climate, weather)
- ☐ **Other Sites**  
(facilities, water use, any other)

Map Satellite Hybrid Terrain USGS

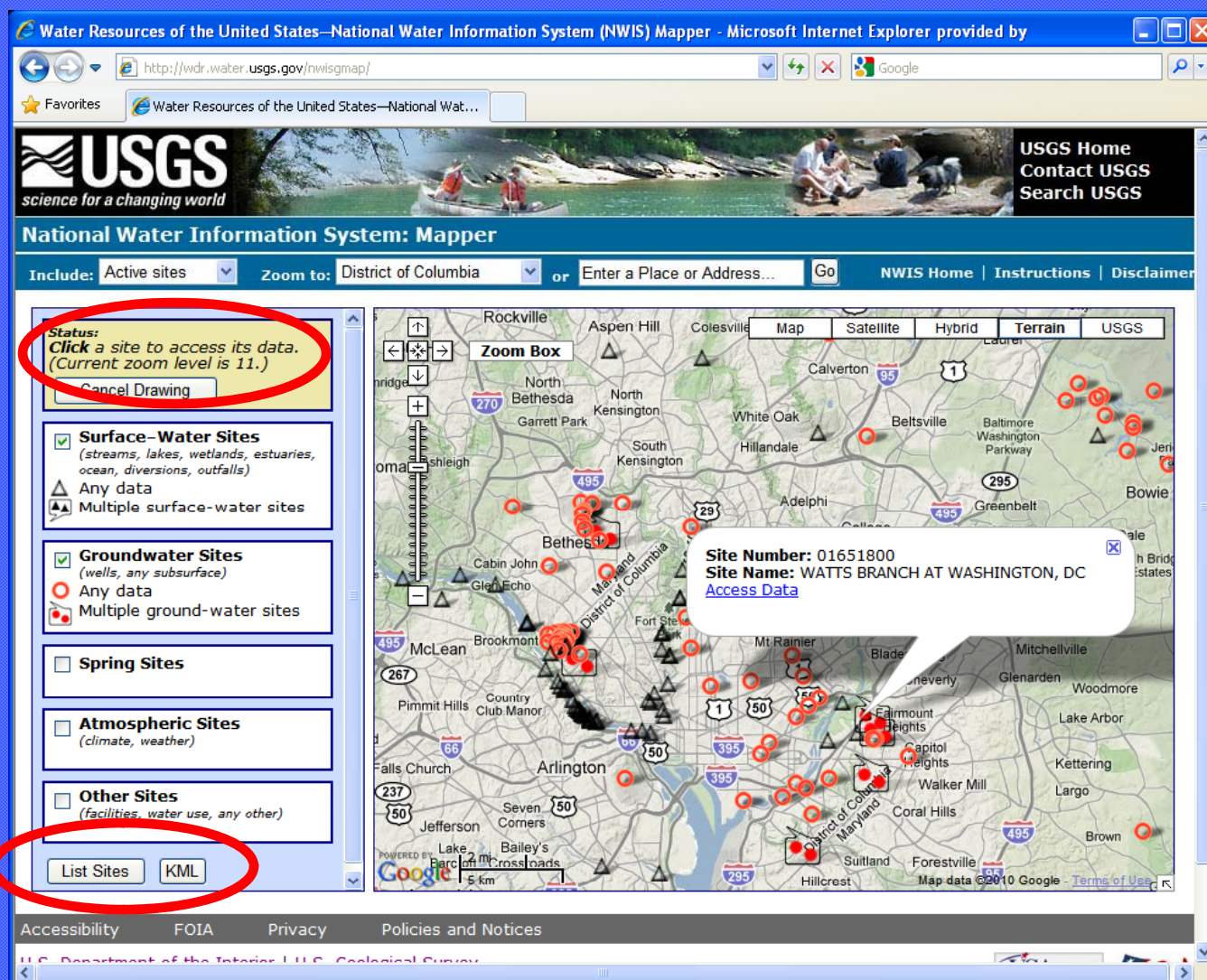
Zoom Box

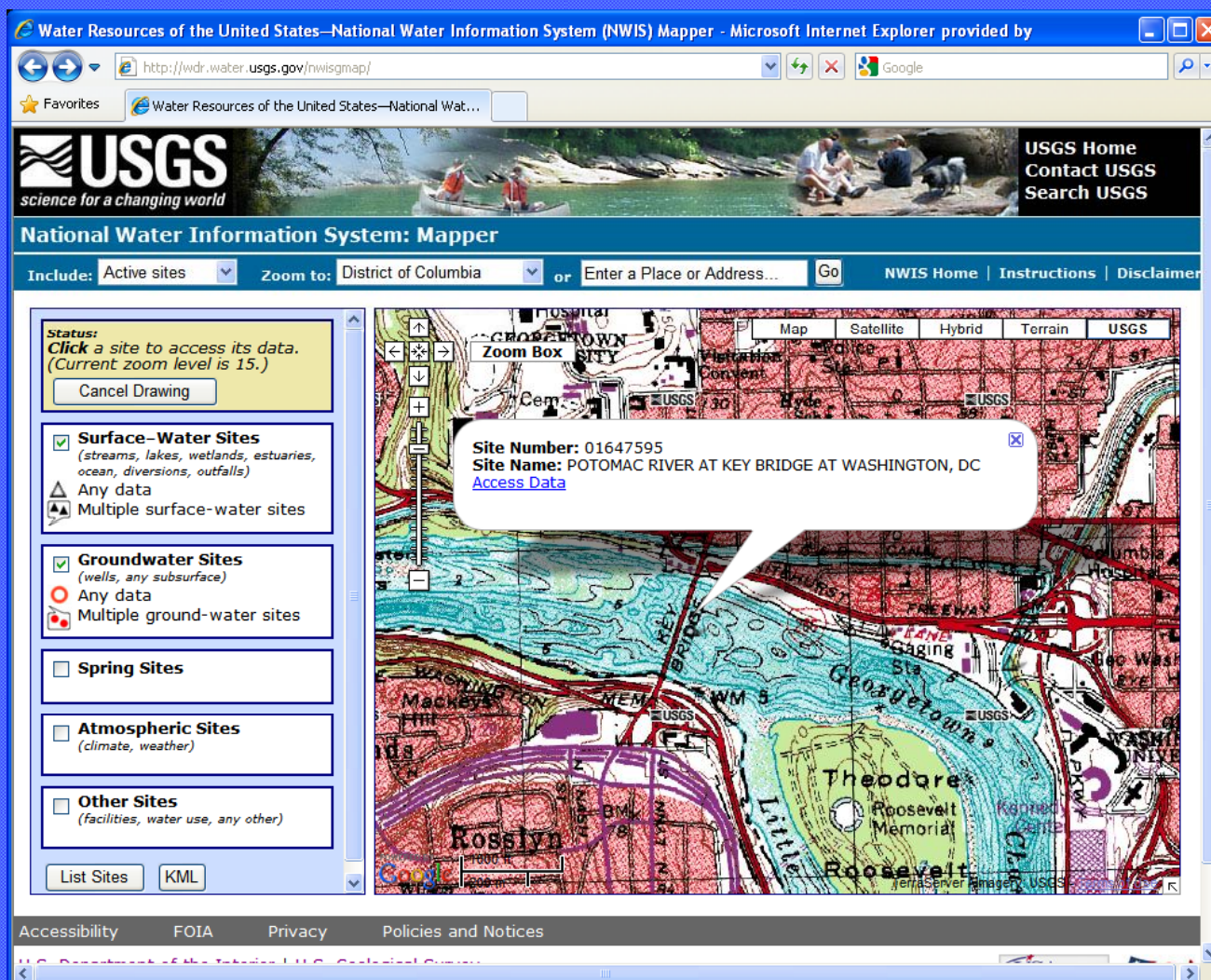
Map data ©2010 Google











## Other web enhancements

- Daily updates of water-quality data
- Links to USGS real-time water-quality map
- Increase in the allowable download size to 35,000 records
- Water-quality data web services  
<http://qwwwebservices.usgs.gov/>





Stay tuned as  
progress continues...



Questions?

