

*The Kentucky Interagency  
Groundwater Monitoring Network:  
A Collaborative Effort in Groundwater  
Resource Characterization*



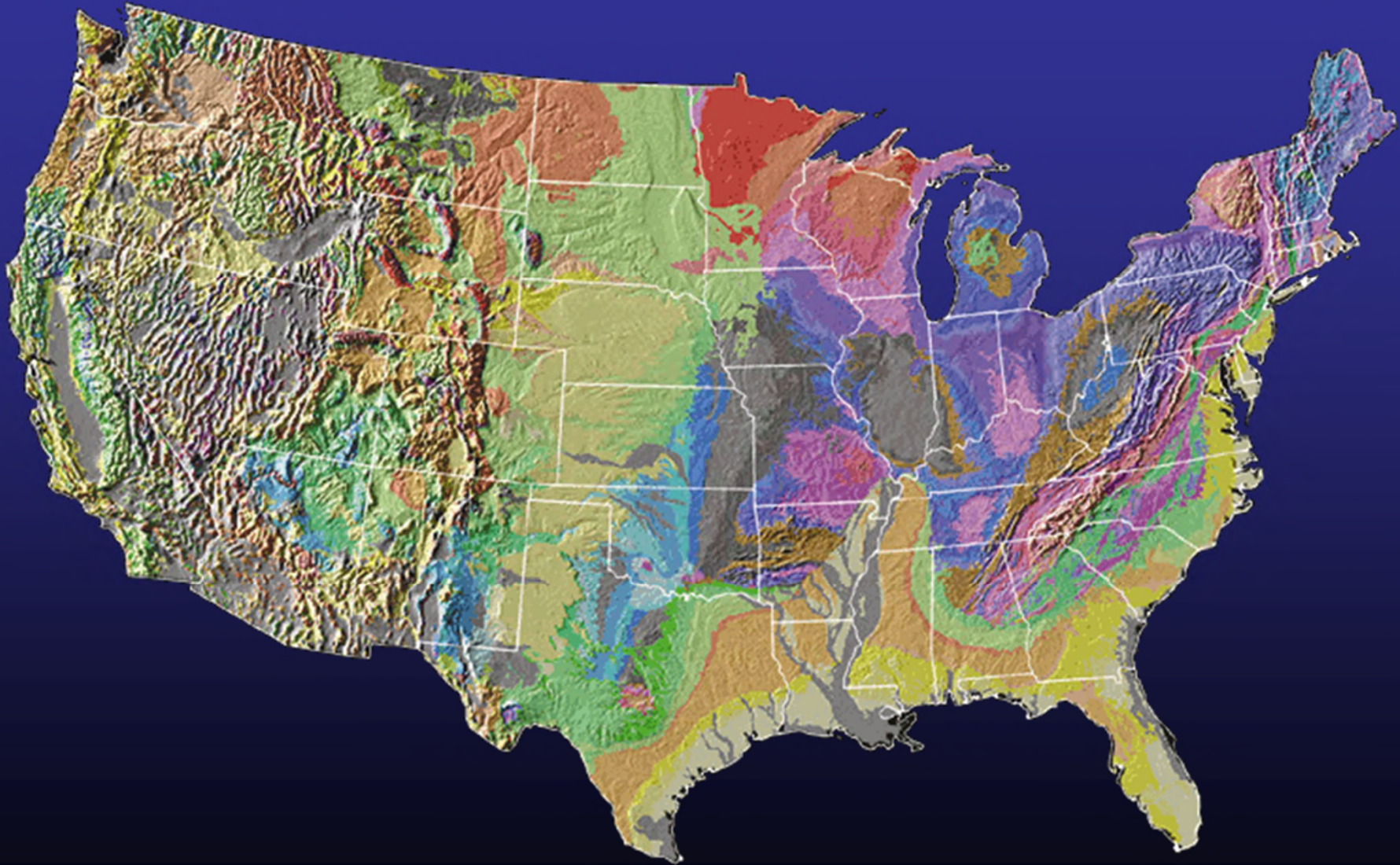
Bart Davidson  
Kentucky Geological Survey  
and

Robert J. Blair  
Kentucky Division of Water



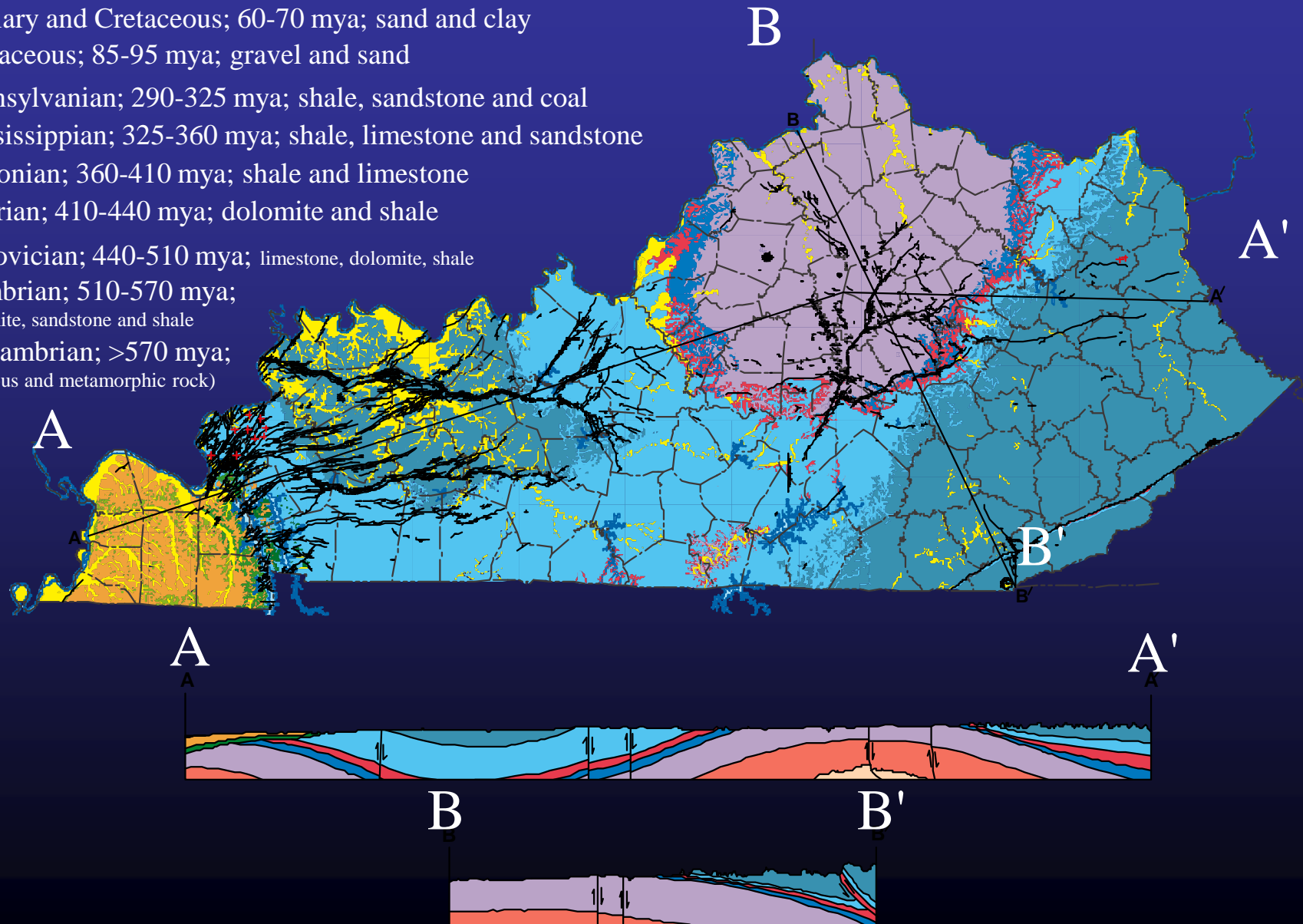
9<sup>th</sup> National Monitoring Conference  
Cincinnati, Ohio  
April 28 – May 2, 2014

# Starting with the Big Picture



# Geology of Kentucky

- Quaternary; 2 mya; sand, clay, gravel
- Quaternary and Tertiary; 1-5 mya; gravel and sand
- Tertiary; 30 mya; clay and sand
- Tertiary and Cretaceous; 60-70 mya; sand and clay
- Cretaceous; 85-95 mya; gravel and sand
- Pennsylvanian; 290-325 mya; shale, sandstone and coal
- Mississippian; 325-360 mya; shale, limestone and sandstone
- Devonian; 360-410 mya; shale and limestone
- Silurian; 410-440 mya; dolomite and shale
- Ordovician; 440-510 mya; limestone, dolomite, shale
- Cambrian; 510-570 mya; dolomite, sandstone and shale
- Precambrian; >570 mya; (igneous and metamorphic rock)





# The Network

## SITE TYPE

• Spring

▲ Well

Eastern Coal Field

Eastern Pennyroyal

Inner Blue Grass

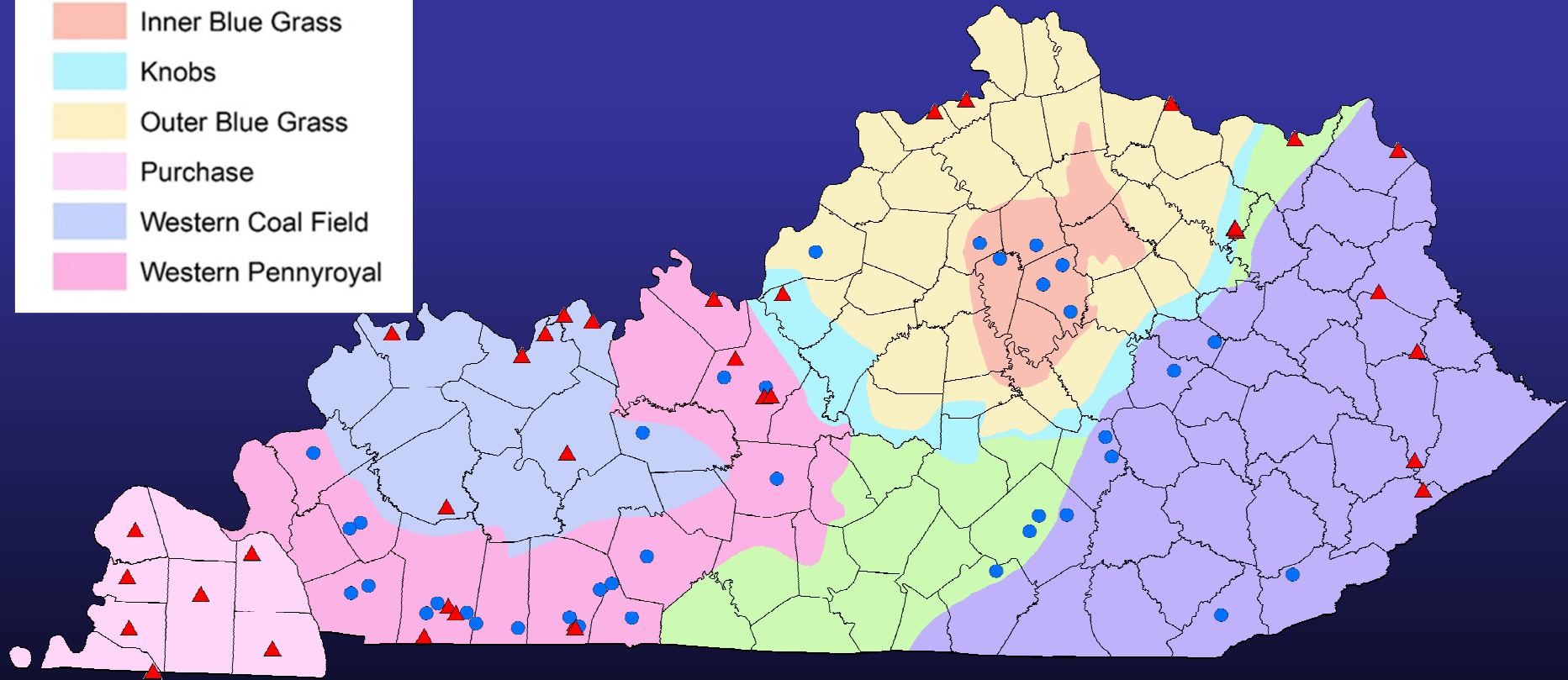
Knobs

Outer Blue Grass

Purchase

Western Coal Field

Western Pennyroyal



**Kentucky Interagency Groundwater Monitoring Network sites  
(maintained by Kentucky Division of Water)**