

MISSOURI STREAM TEAM INTERACTIVE MAP

By: April
Williams

Stream Team
Biologist

Missouri
Department of
Conservation

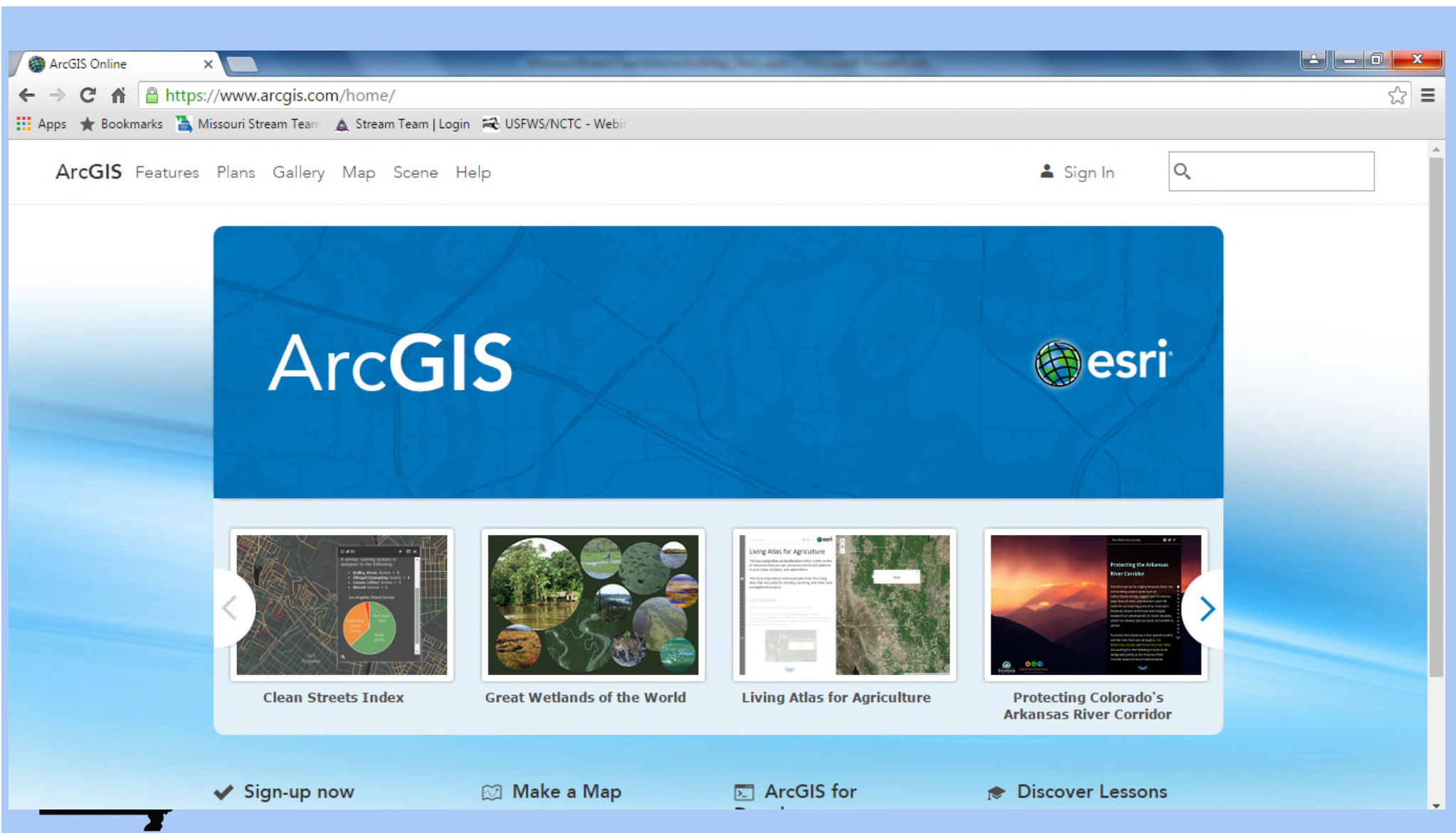


MISSOURI STREAM TEAM

- Total Volunteers: **Over 80,000**
- Total VWQM Trained Volunteers: **9,719**
 - **2,328** have submitted data to MO Department of Natural Resources
- VWQM trips reported in since 1989: **28,219**
 - VWQM trips reported in 2015: **1,167**



ARC GIS ONLINE



ARC GIS ONLINE

Missouri Department of Conservation

mdcgis.maps.arcgis.com/home/index.html


Apps Bookmarks Missouri Stream Team Stream Team | Login USFWS/NCTC - Web


Home Gallery Map Scene Groups My Content My Organization


April


Missouri Department of Conservation Mapping Service

Missouri Department of Conservation Gallery Group

 Archery Ranges

 Boat Ramps, Missouri Department of Conservation

 LET'S GO CAMPING Camping Opportunities

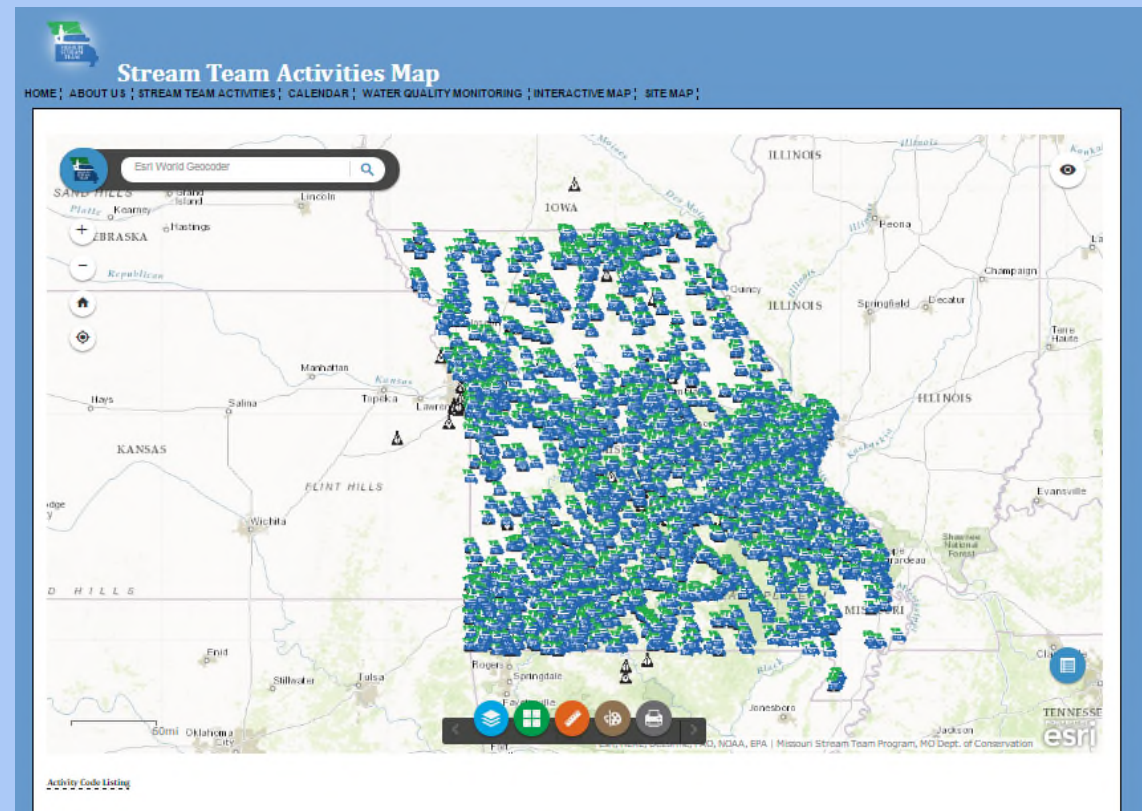
 Conservation Areas and Area Features

Serving Nature and You.

Our Mission:

STREAM TEAM INTERACTIVE MAP

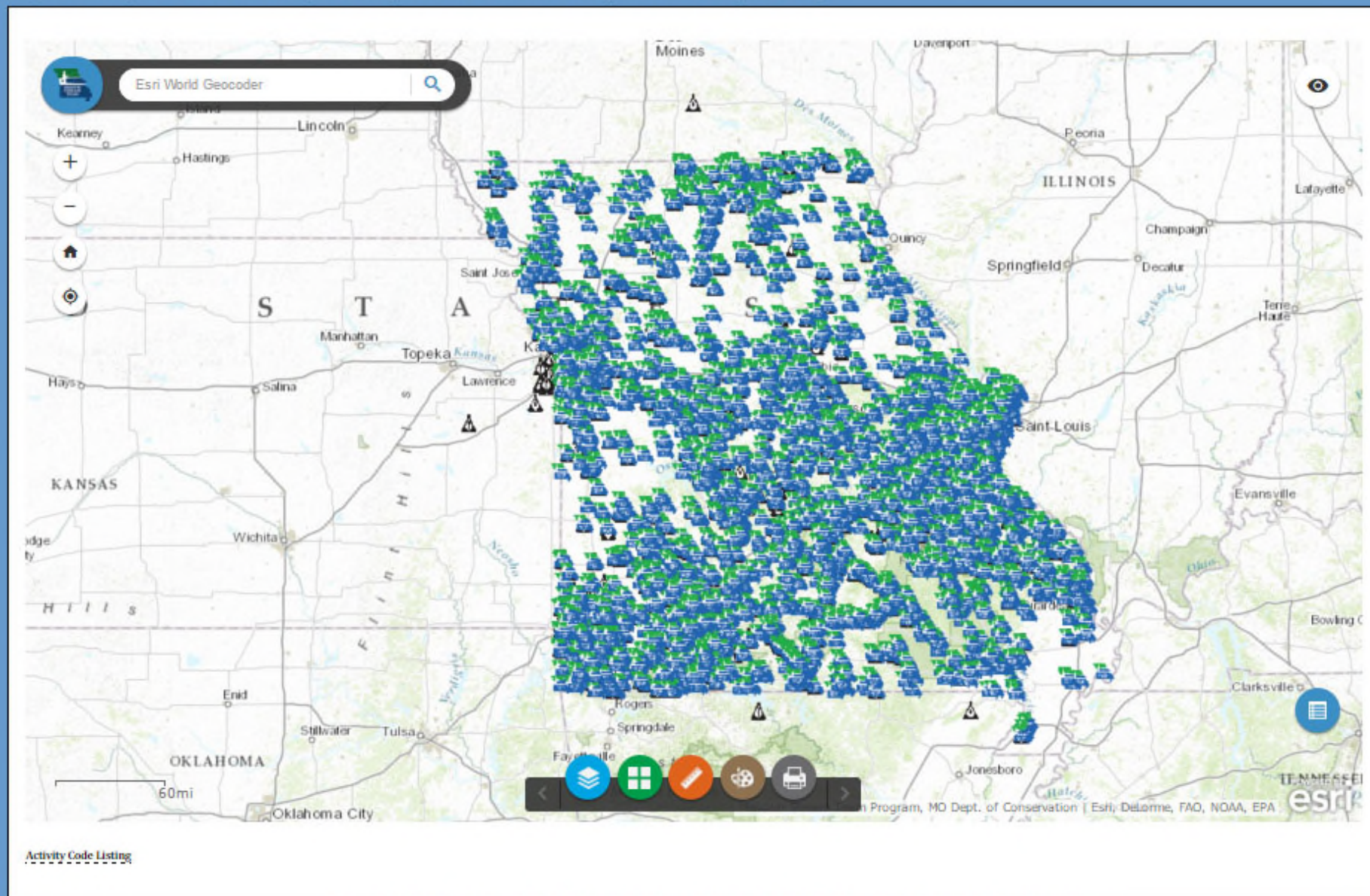
- Spatially display volunteer activities
- Access data at monitored sites





Stream Team Activities Map

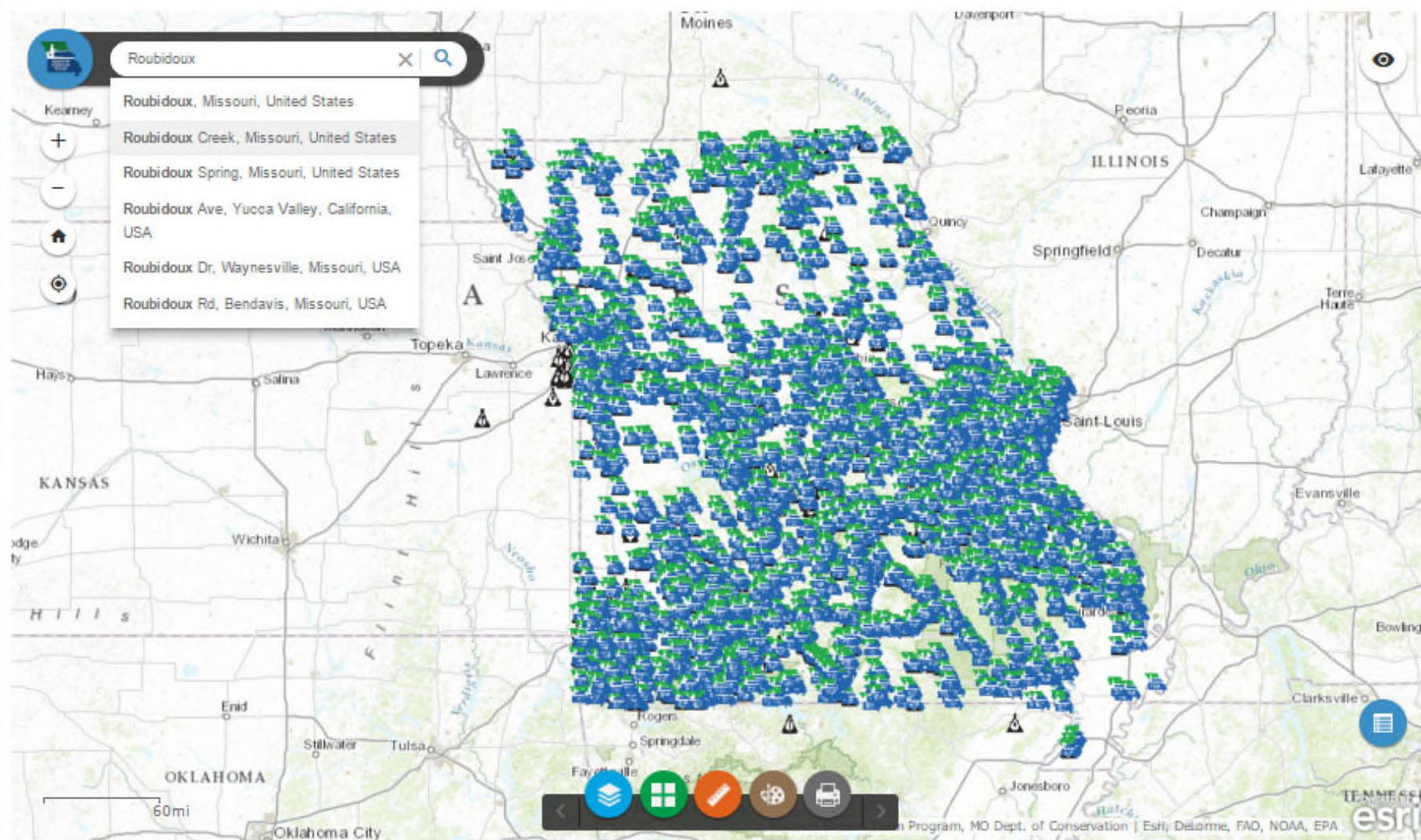
[HOME](#) | [ABOUT US](#) | [STREAM TEAM ACTIVITIES](#) | [CALENDAR](#) | [WATER QUALITY MONITORING](#) | [INTERACTIVE MAP](#) | [SITE MAP](#)





Stream Team Activities Map

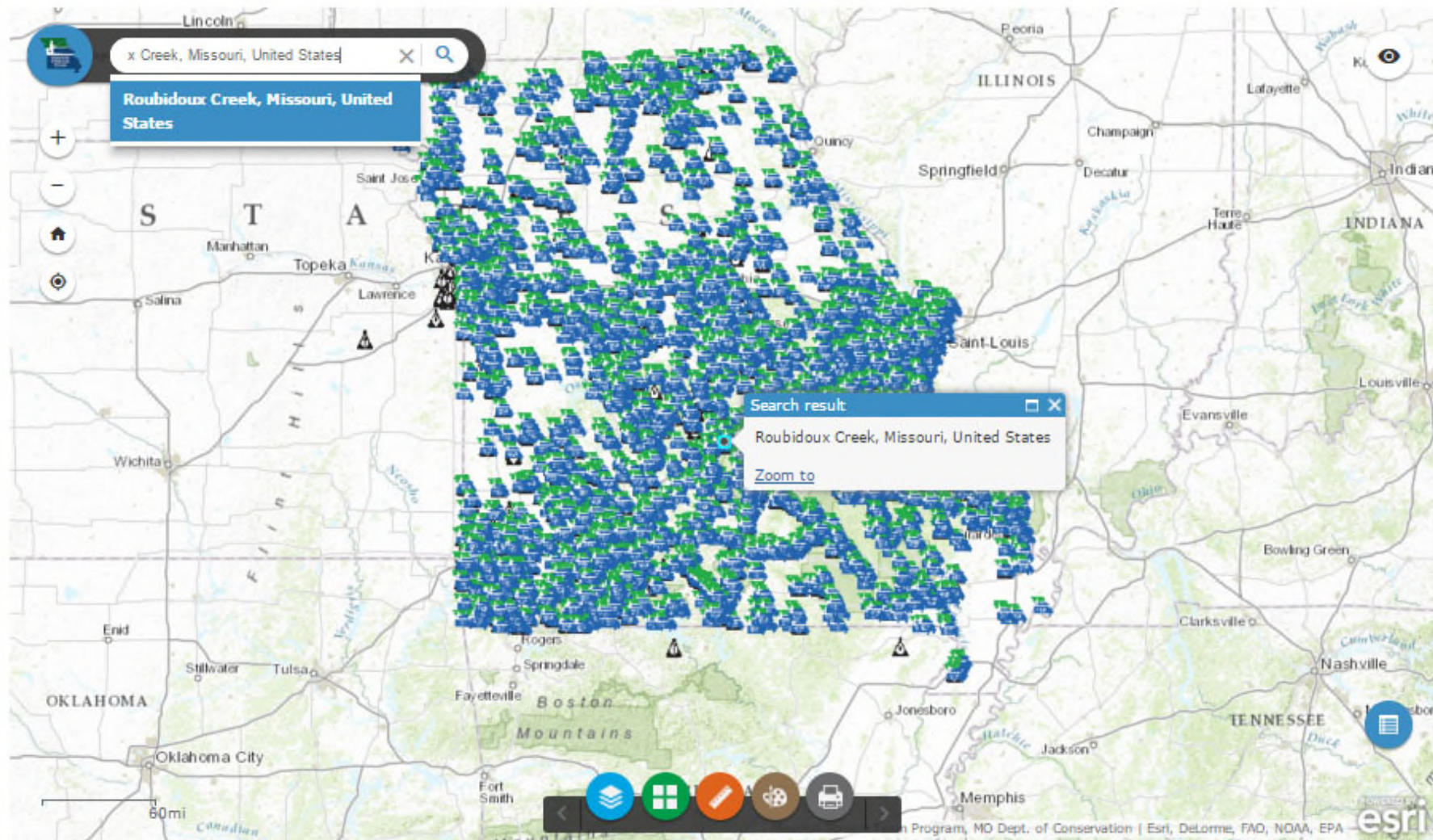
[HOME](#) | [ABOUT US](#) | [STREAM TEAM ACTIVITIES](#) | [CALENDAR](#) | [WATER QUALITY MONITORING](#) | [INTERACTIVE MAP](#) | [SITE MAP](#)





Stream Team Activities Map

[HOME](#) | [ABOUT US](#) | [STREAM TEAM ACTIVITIES](#) | [CALENDAR](#) | [WATER QUALITY MONITORING](#) | [INTERACTIVE MAP](#) | [SITE MAP](#)

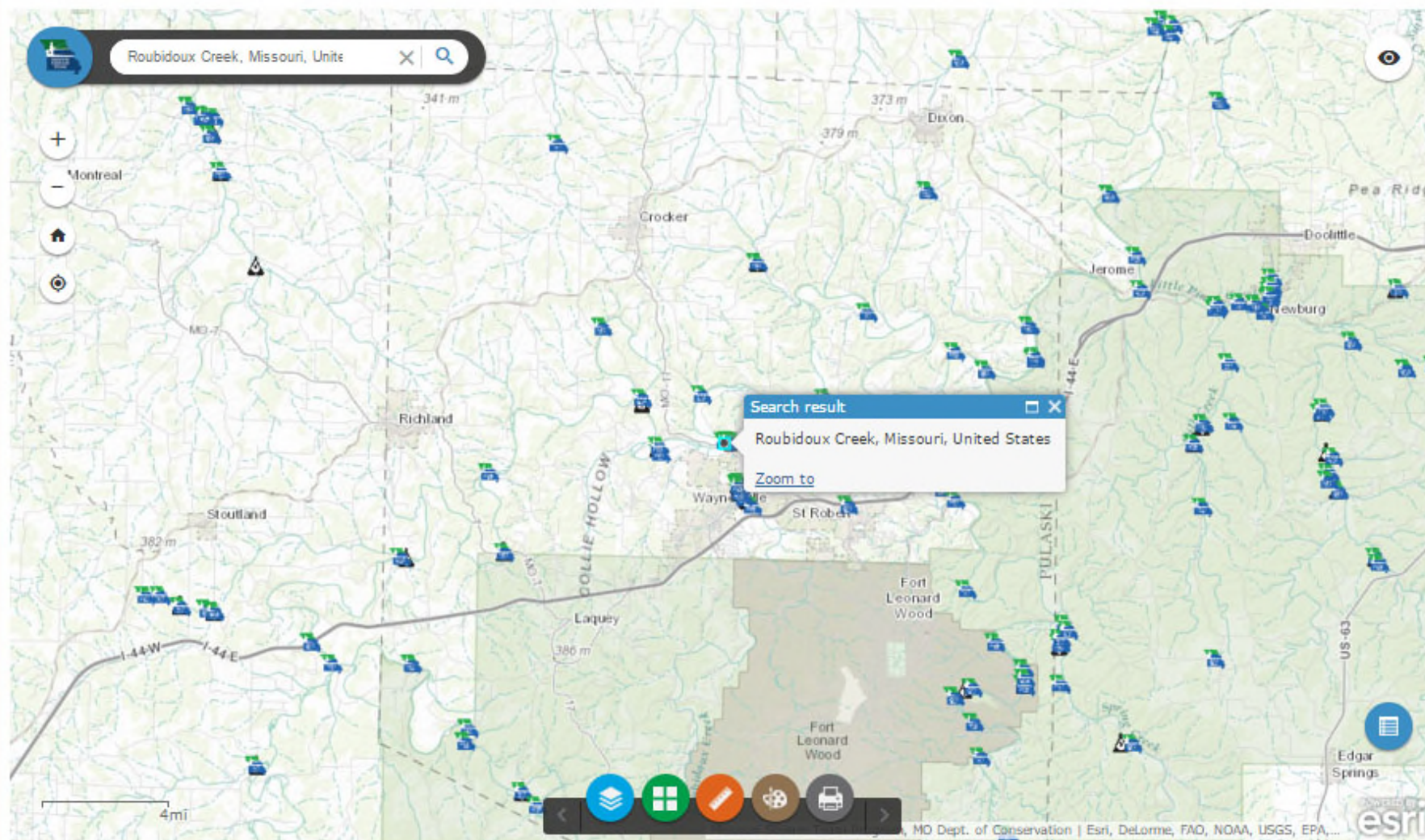


[Activity Code Listing](#)



Stream Team Activities Map

[HOME](#) | [ABOUT US](#) | [STREAM TEAM ACTIVITIES](#) | [CALENDAR](#) | [WATER QUALITY MONITORING](#) | [INTERACTIVE MAP](#) | [SITE MAP](#)



[Activity Code Listing](#)



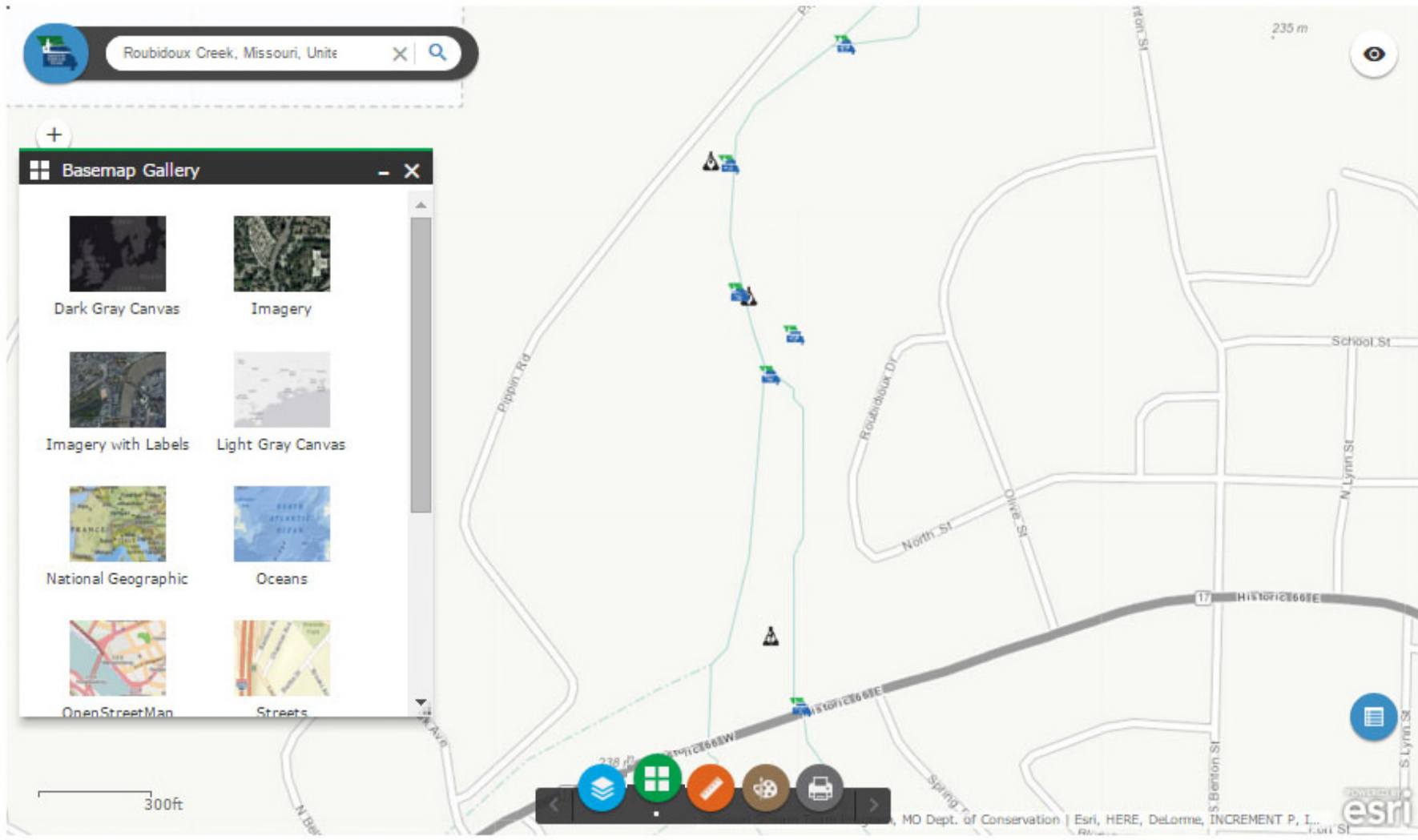
Stream Team Activities Map

HOME | ABOUT US | STREAM TEAM ACTIVITIES | CALENDAR | WATER QUALITY MONITORING | INTERACTIVE MAP | SITE MAP |

Roubidoux Creek, Missouri, Unite

Basemap Gallery

Dark Gray Canvas	Imagery
Imagery with Labels	Light Gray Canvas
National Geographic	Oceans
OpenStreetMap	Streets



Activity Code Listing



Stream Team Activities Map

[HOME](#) | [ABOUT US](#) | [STREAM TEAM ACTIVITIES](#) | [CALENDAR](#) | [WATER QUALITY MONITORING](#) | [INTERACTIVE MAP](#) | [SITE MAP](#)

Roubidoux Creek, Missouri, Unite

Basemap Gallery

- Dark Gray Canvas
- Imagery
- Imagery with Labels
- Light Gray Canvas
- National Geographic
- Oceans
- OpenStreetMap
- Streets

MO Dept. of Conservation | CNES/Airbus DS, Earthstar Geographic

POWERED BY **esri**

[Activity Code Listing](#)



[HOME](#) | [ABOUT US](#) | [STREAM TEAM ACTIVITIES](#) | [CALENDAR](#) | [WATER QUALITY MONITORING](#) | [INTERACTIVE MAP](#) | [SITE MAP](#)



Roubidoux Creek, Missouri, United States



Basemap Gallery



Dark Gray Canvas



Imagery



Imagery with Labels



Light Gray Canvas



National Geographic



Oceans



OnenStreetMan



Streets



MO Dept. of Conservation | Esri, HERE, DeLorme, INCREMENT P, I.





Stream Team Activities Map

[HOME](#) | [ABOUT US](#) | [STREAM TEAM ACTIVITIES](#) | [CALENDAR](#) | [WATER QUALITY MONITORING](#) | [INTERACTIVE MAP](#) | [SITE MAP](#)



599

PIPPIN RD

PIPPIN RD

PIPPIN RD

100ft

[Activity Code Listing](#)

© 2013 Esri. All rights reserved. Esri, the Esri logo, Intermap, USGS, METI/NASA, EPA, USDA | Missouri Stream Te...



Stream Team Activities Map

HOME | ABOUT US | STREAM TEAM ACTIVITIES | CALENDAR | WATER QUALITY MONITORING | INTERACTIVE MAP | SITE MAP |



PIPPIN RD

PIPPIN RD

559

100ft

Stream Team Activity Location

Stream Name	Roubidoux Creek
Location Description	500 yds N of Hwy 17
County	Pulaski
UTM Easting	569859.35350
UTM Northing	4187452.37042
Latitude	37.831821
Longitude	-92.206127
Activities by ST#(s)	2540
Activities	WQM
Location Number (MDC Office Use ONLY)	5186

[Zoom to](#)



Activity Code Listing

© 2013 Esri, Inc. All rights reserved. Esri, the Esri logo, ArcGIS, and the ArcGIS logo are registered trademarks or trademarks of Esri, Inc. in the United States and other countries. Other brands and product names are trademarks of their respective owners. Missouri Stream Team is a registered trademark of the Missouri Stream Team.





Stream Team Activities Map

HOME | ABOUT US | STREAM TEAM ACTIVITIES | CALENDAR | WATER QUALITY MONITORING | INTERACTIVE MAP | SITE MAP |



Esri World Geocoder



Stream Team Water Quality	
Stream Name	Roubidoux Creek
Location Description	
County	Pulaski
UTM Easting	569845
UTM Northing	4187455
Latitude	37.831806
Longitude	-92.206123
Water Quality Data	More info
Site IDX (DNR Office Use ONLY)	1656
Zoom to	

100ft



© 2013 Esri, Inc. All rights reserved. ArcGIS, the ArcGIS logo, and the Esri logo are registered trademarks or trademarks of Esri, Inc. in the United States and/or other countries. Other brands and product names are trademarks of their respective owners.

Activity Code Listing

You have selected:[Abbreviations
Key](#)

Email Stream Team if this is
your site and you have
questions and/or comments
about this location.

Stream Name: Roubidoux Creek
County Name: Pulaski
Location Description: NO DESCRIPTION GIVEN

If there is anything incorrect about this location information or its position on the map, please send comments by clicking on the email button above.

If you would like to view Water Quality Monitoring data for this location, please select one of the buttons below.

[Water Chemistry Data](#)[Visual Survey](#)[Stream Team Home](#)[Close Window](#)

*This site contains provisional data.

Use your browsers **BACK** button to return to location results



Email Stream Team if this is your site and you have questions and/or comments about this location.

Chemical Data														
Date Sampled	Stream Team Number	Site Number	Time Sampled	Water Temp (°C)	Air Temp (°C)	Dissolved Oxygen (mg/L)	Oxygen Saturation %	pH	Nitrate as N (mg/L)	Ammonia as N (mg/L)	Phosphate PO4 (mg/L)	Conductivity (umhos/cm)	Turbidity (JTU)	Level of Training
6/22/2005	2540	1	950	21	28	8	90	7.8	1.7	0	1.1	340	15	2

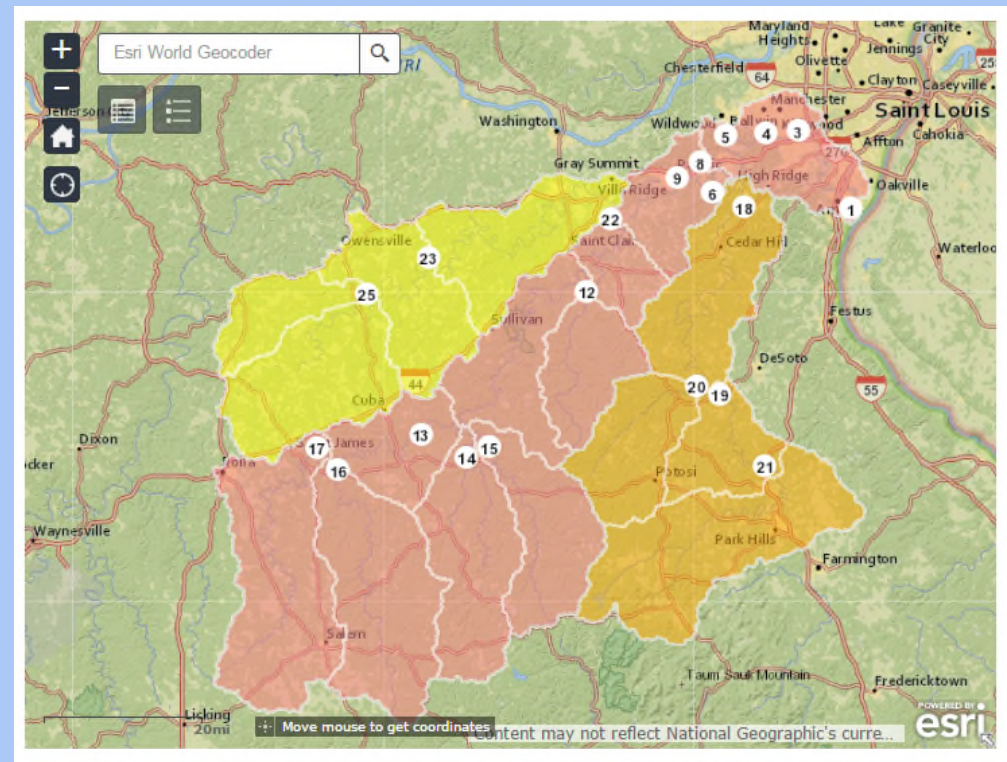
* Data that does not contain a Level of Training value has not been through the QA/QC process and is considered provisional data and subject to change.

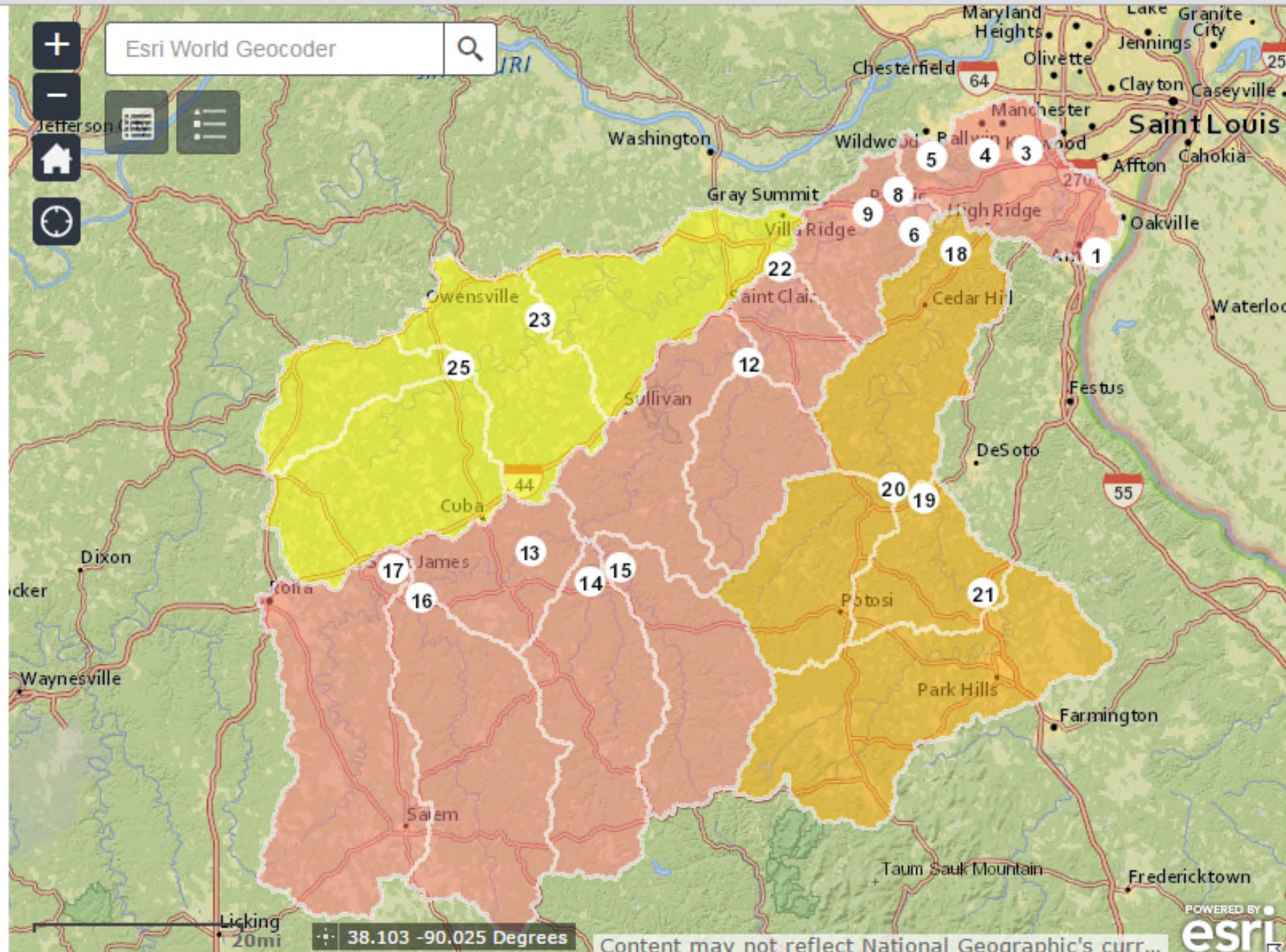
WQM Meta Data

Close Window

VWQM SPECIAL PROJECTS MAP

- Display data specific to a monitoring project
- Able to change extent, pop-ups, and tools





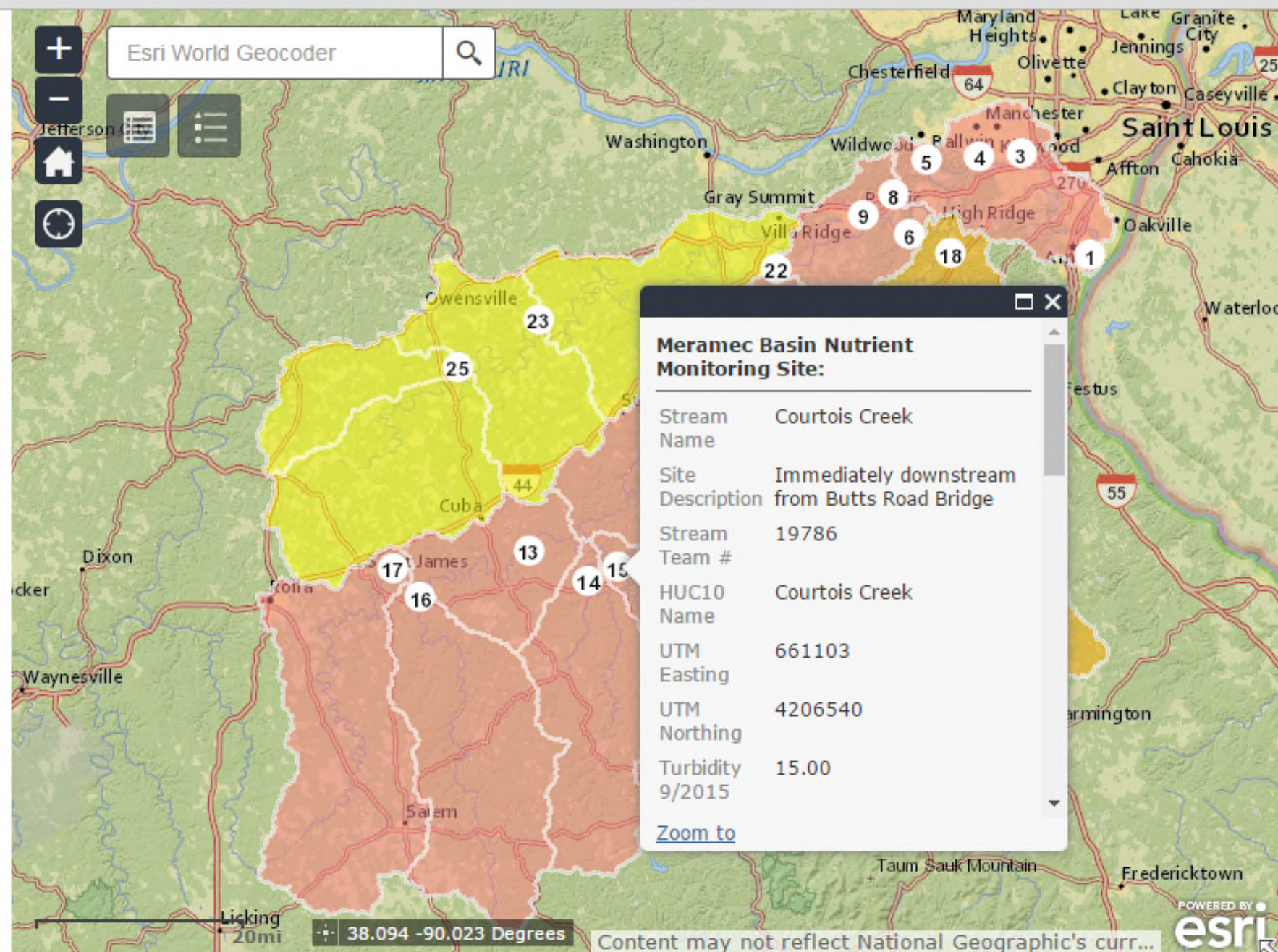
Esri World Geocoder

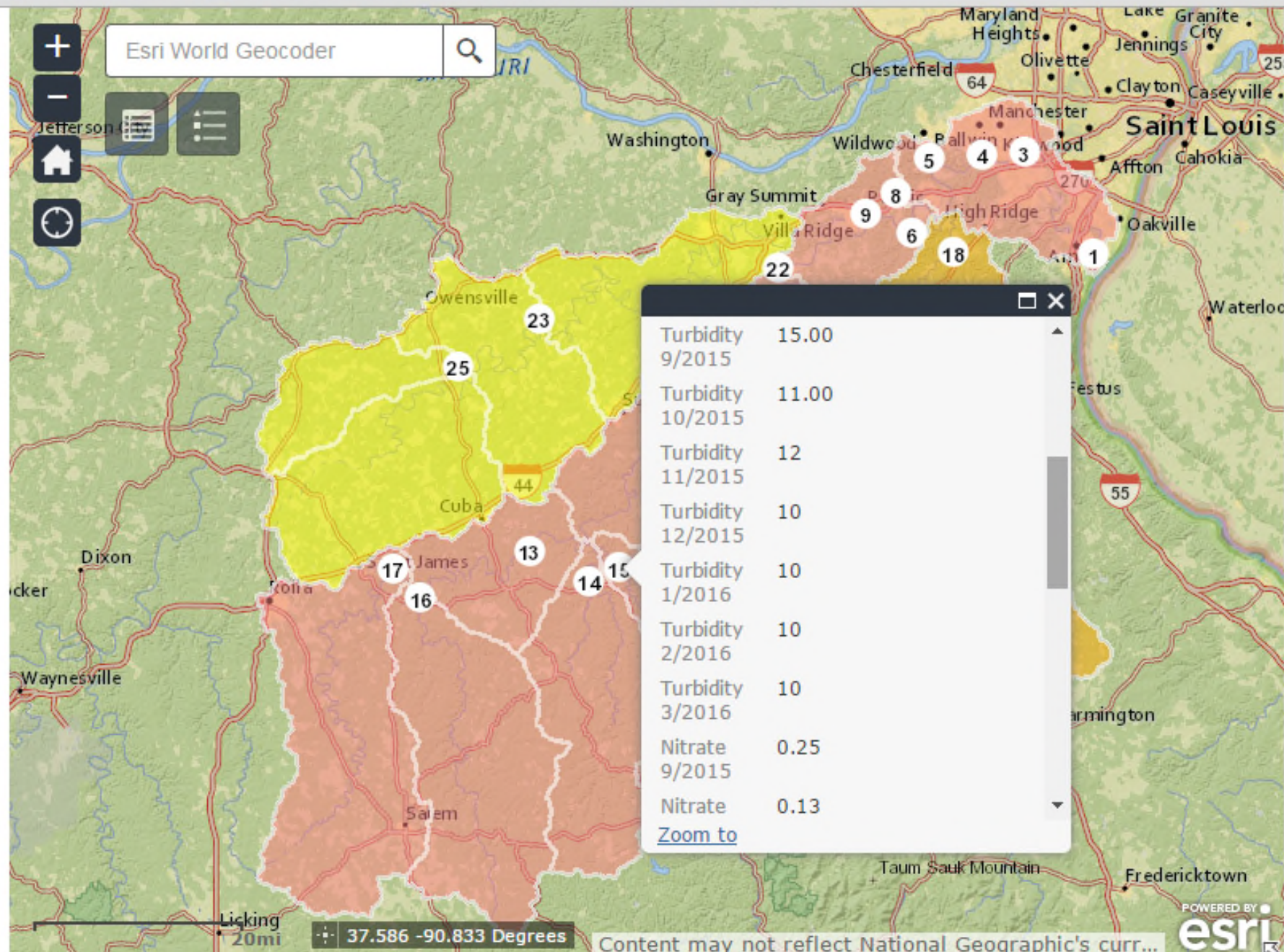


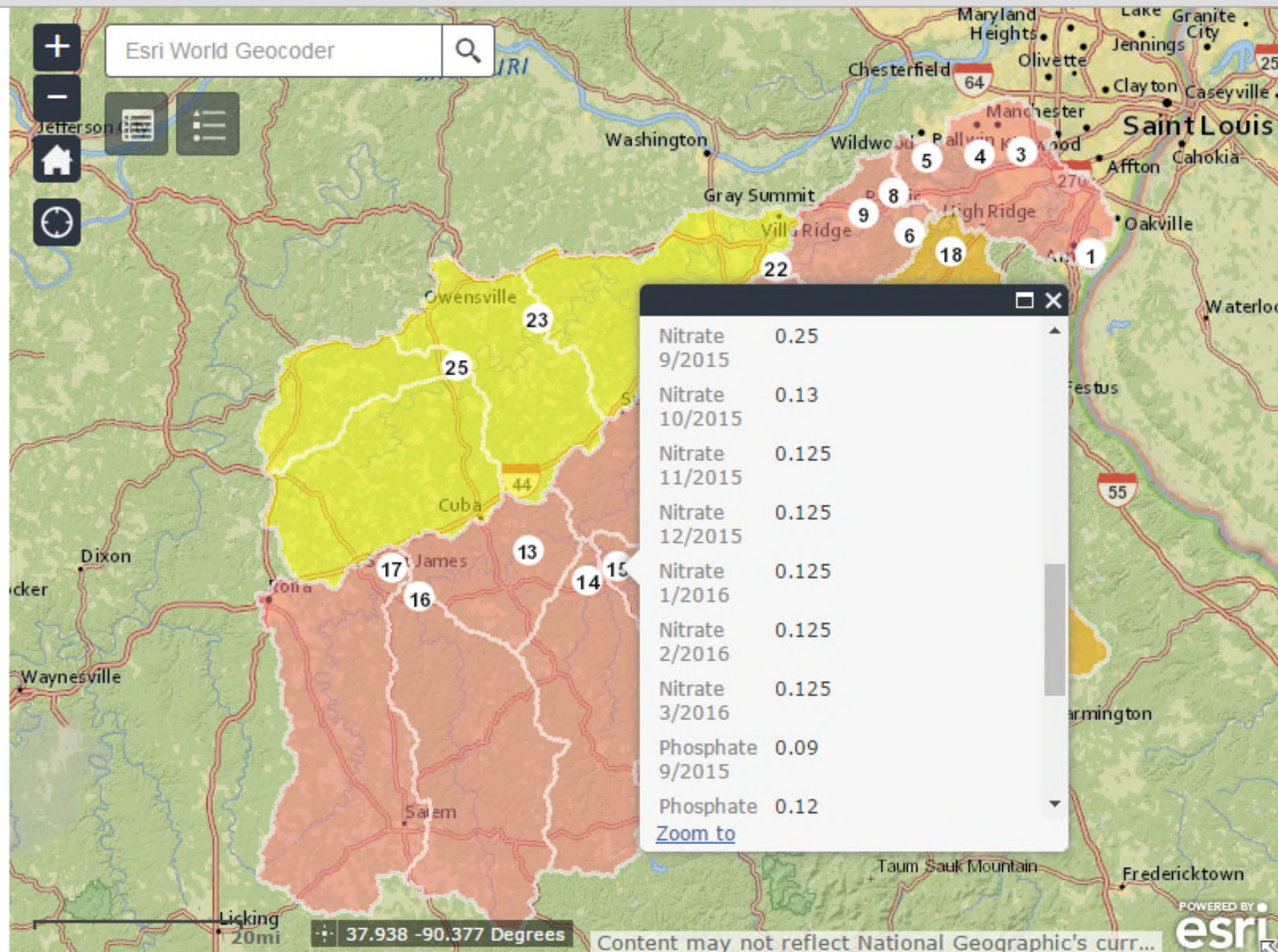
38.103 -90.025 Degrees

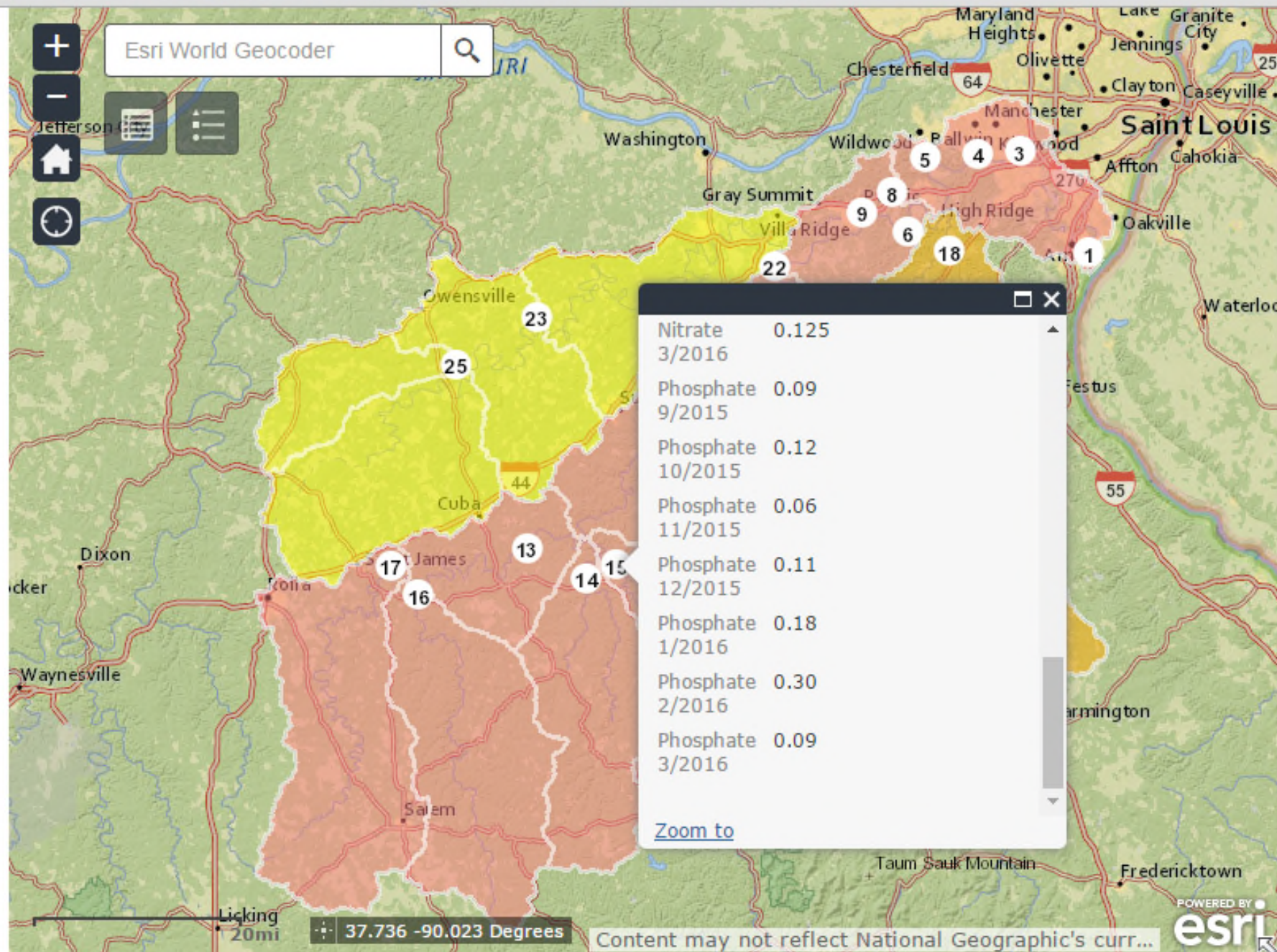
Content may not reflect National Geographic's curr...











Thank you!

April Williams
April.Perry@mdc.mo.gov

