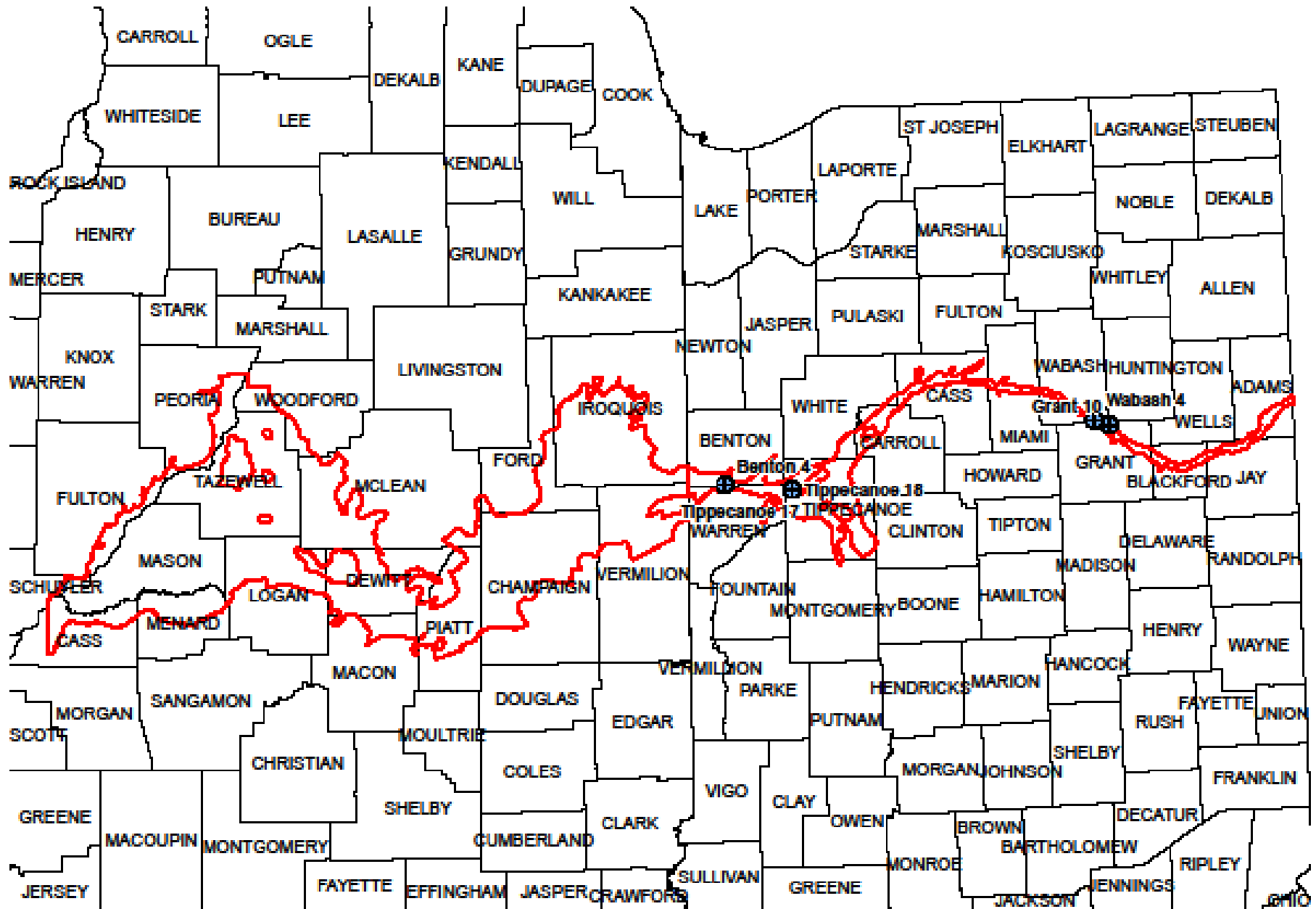


Mahomet-Teays Bedrock Valley across IN-IL



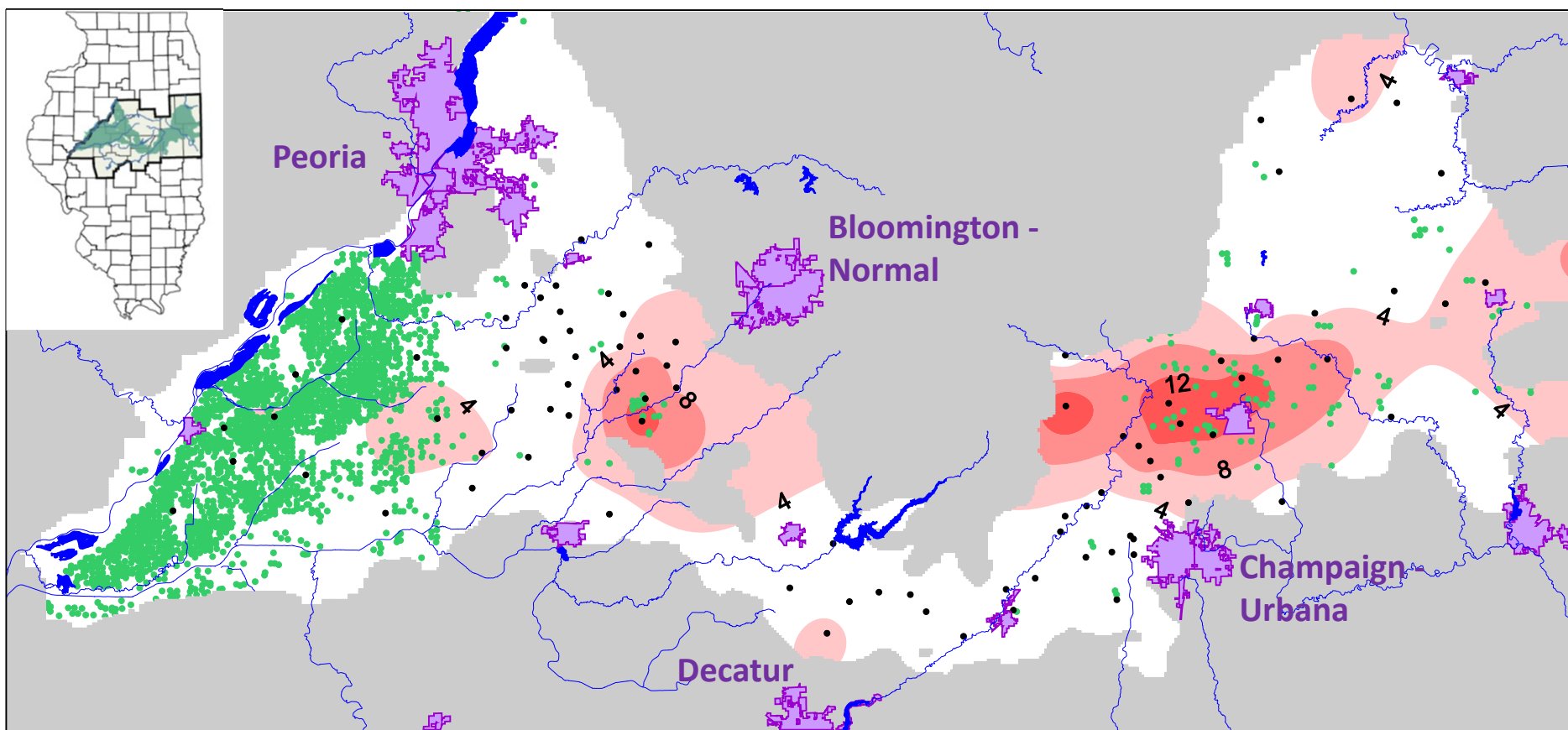
An aerial photograph of a rural landscape. In the upper left, a paved road runs vertically, with a dark car visible. To the right of the road is a railroad track with multiple parallel rails. Below the road and tracks are large agricultural fields. One field is filled with rows of mature, golden-brown corn. To the right of the corn field is a large, vibrant green field, likely soybeans. A long, thin metal structure, possibly a pivot irrigation wheel, extends from the green field towards the bottom right corner.

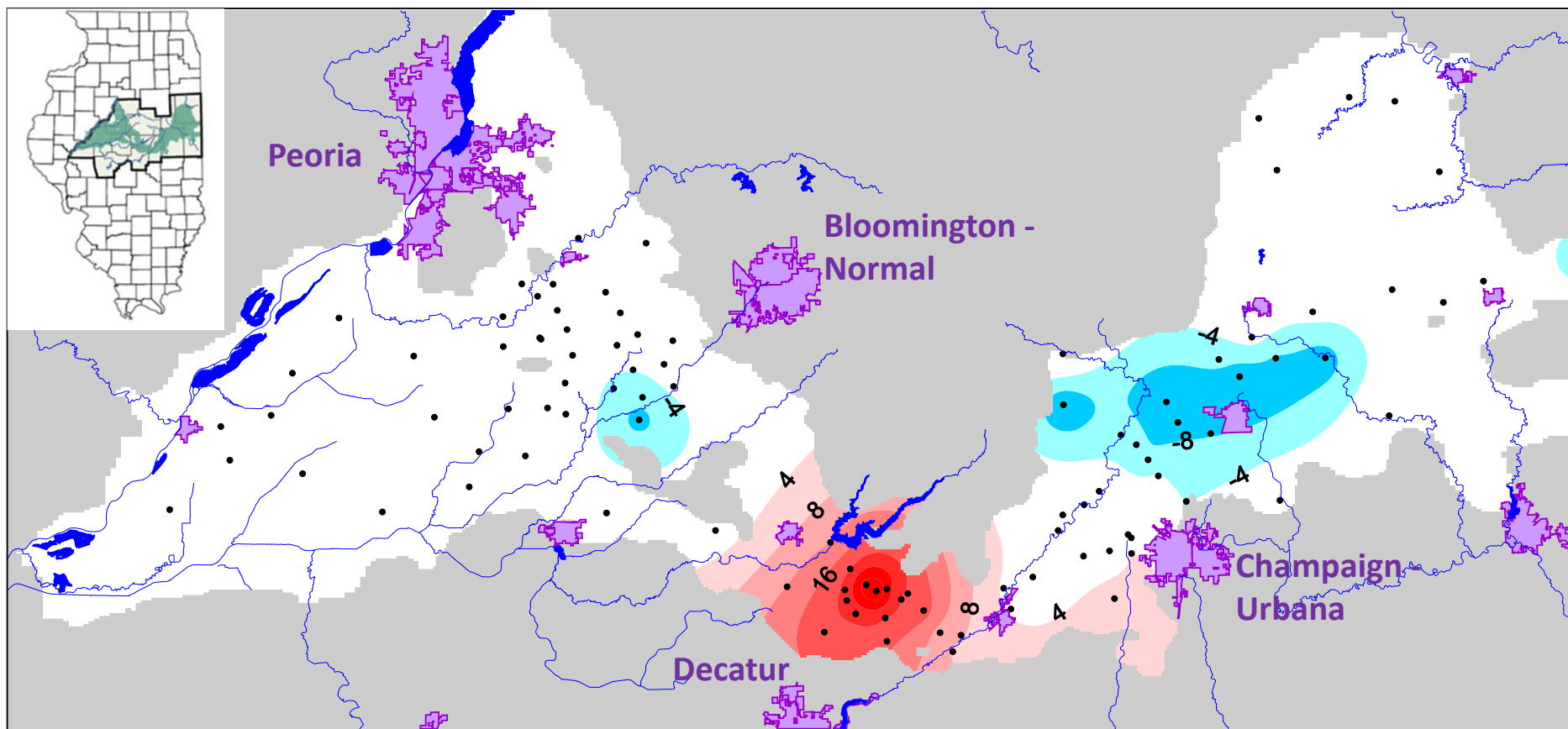
ISWS Activities

- Water Supply Planning efforts
- Publication of Mahomet Aquifer Report
- Improvements to databases
- Online water level data
- Construction of “supermodel”
- Additional observation wells

External Activities

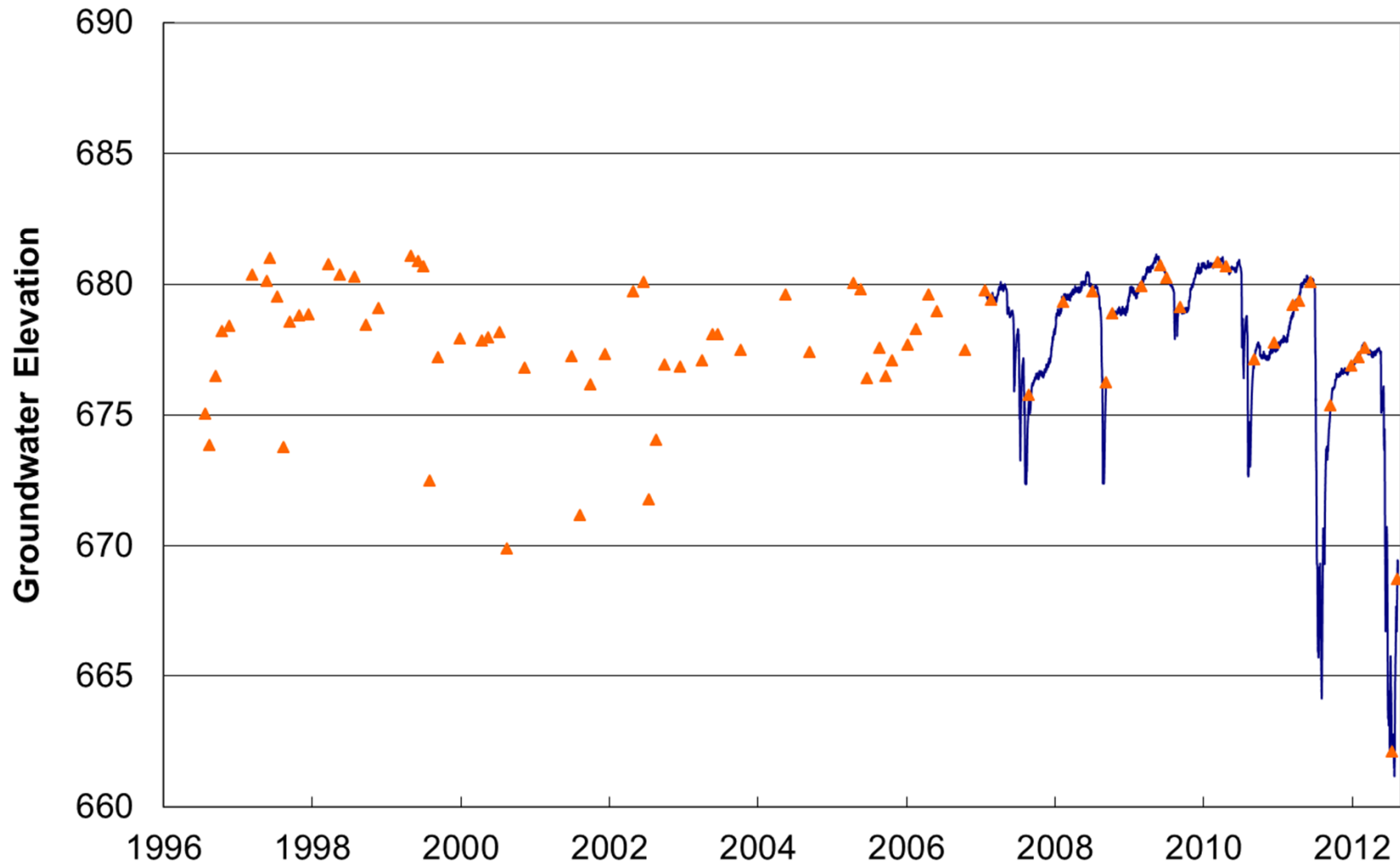
- 2012 drought
- Increased irrigation (\$7 corn)
- Sole Source Aquifer petition



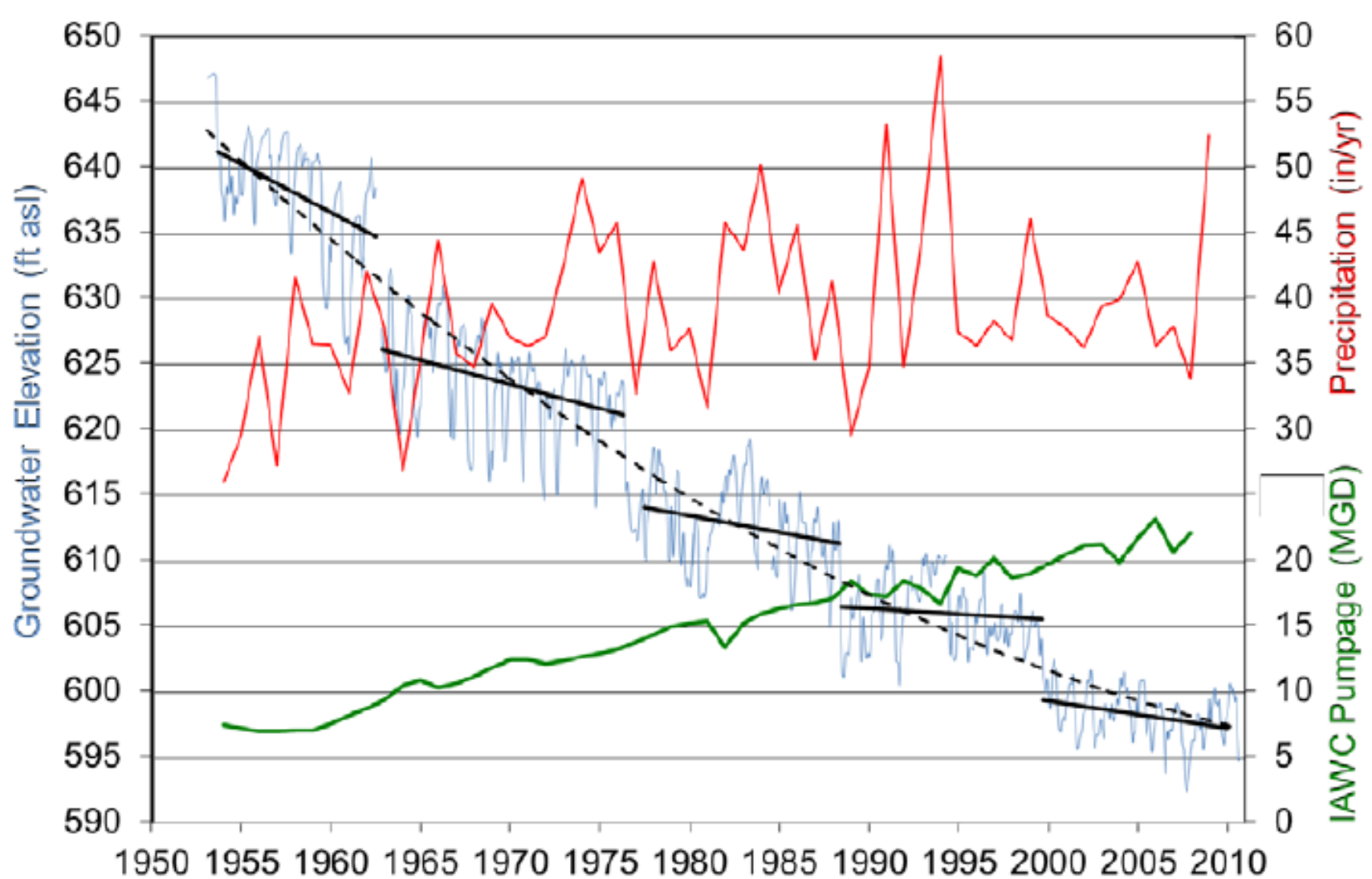


Seasonal Drawdown – Champaign County

Groundwater Elevation at CHM-96A (Dewey)



Long-Term Drawdown – Champaign County





**ILLINOIS STATE
WATER SURVEY**
PRAIRIE RESEARCH INSTITUTE


[About ISWS](#)
[Research](#)
[Data](#)
[Publications](#)
[Library](#)
[News](#)
[Staff](#)

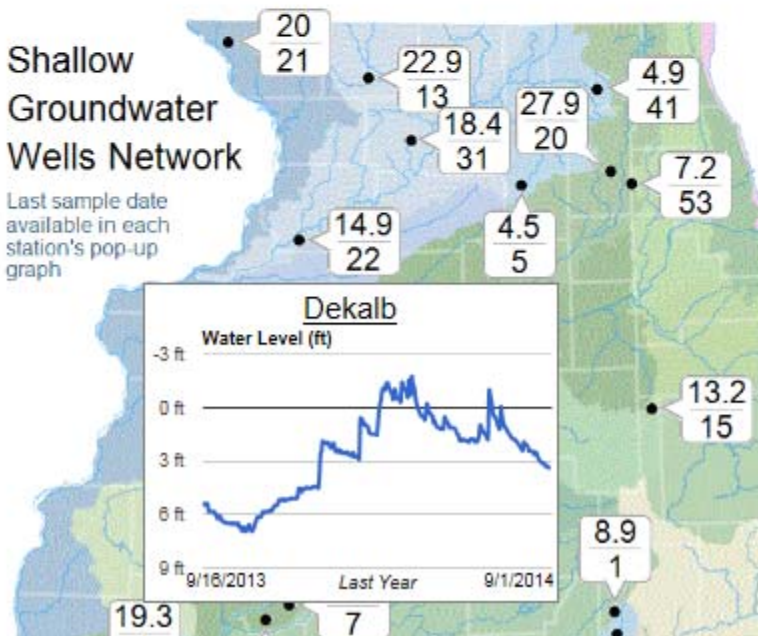

Water and Atmospheric Resources Monitoring Program (WARM)

[Weather](#)
[Soil](#)
[Groundwater](#)
[Sediment](#)
[Streamflow](#)
[Reservoirs](#)
[Groundwater Data](#)
[Background](#)
[Stations Map](#)
[Publications](#)
[Data Disclaimer](#)
[Contact Us](#)

Shallow Groundwater Wells Network

Shallow Groundwater Wells Network

Last sample date
available in each
station's pop-up
graph



- [Barry \(1956-Present\)](#) 61
- [Belleville \(1996-Present\)](#) 10
- [Big Bend \(2005-Present\)](#) 22
- [Bondville \(1982-Present\)](#) 1120
- [Bondville \(1996-Present\)](#) 1
- [Boyleston \(1984-Present\)](#) 221
- [Brownstown \(1996-Present\)](#) 3
- [Cambridge \(1961-2004\)](#) 51
- [Carbondale \(1997-Present\)](#) 11
- [Crystal Lake \(1950-Present\)](#) 41
- [Dekalb \(1996-Present\)](#) 5
- [Dixon Springs #1 \(1955-Present\)](#) 191
- [Dixon Springs #2 \(1956-Present\)](#) 2
- [Fairfield \(1997-Present\)](#) 34
- [Fermi \(1988-Present\)](#) 53
- [Freeport \(1996-Present\)](#) 13
- [Galena \(1963-Present\)](#) 21
- [Good Hope \(1980-Present\)](#) 72
- [Greenfield \(1965-Present\)](#) 132

Publications
Data Disclaimer
Contact Us

Township : 18N Range : 07E

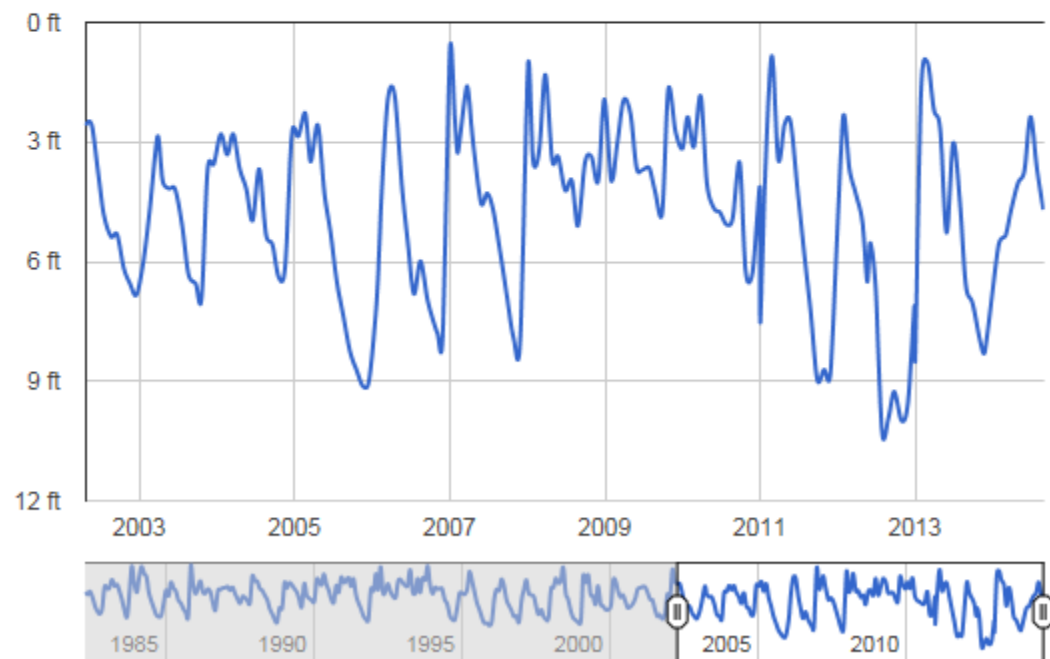
Section : 02 Plot : 3G

Point Elevation : 701.8 ft.

Period of Record : (1982-Present)

[Click to save .CSV](#)

Depth-to-Water Data for Bondville



Indiana's Selected Observation Wells

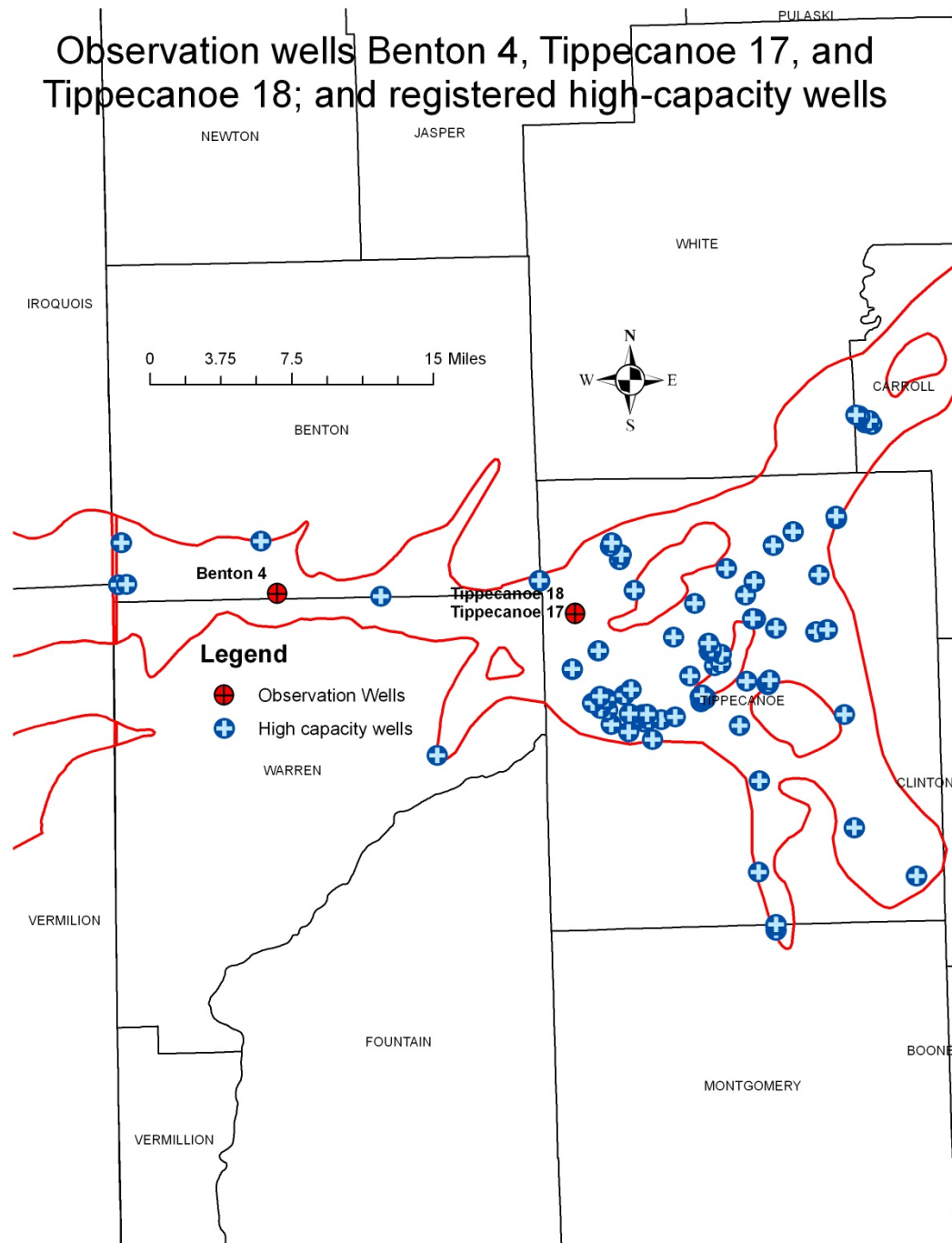
(for water level and quality observations)

Organization	Site ID	Site Name	Latitude	Longitude	Horiz Datum	Altitude (optional)	Altitude Datum
IN DNR	402851087213501	121640–Benton 4 (BE 4)	40.480833	-87.359722	NAD27	710.00	NGVD29
IN DNR	402734087033401	126940–Tippecanoe 17 (TC 17)	40.459410	-87.059581	NAD27	681.00	NGVD29
IN DNR	402734087033402	126955–Tippecanoe 18 (TC 18)	40.459410	-87.059581	NAD27	681.00	NGVD29
IN DNR	403948085414601	116824–Wabash 4 (WB 4)	40.663333	-85.696111	NAD27	837.40	NGVD29
IN DNR	403836085374401	119190–Grant 10 (GT 10)	40.643333	-85.628889	NAD27	912.16	NGVD29

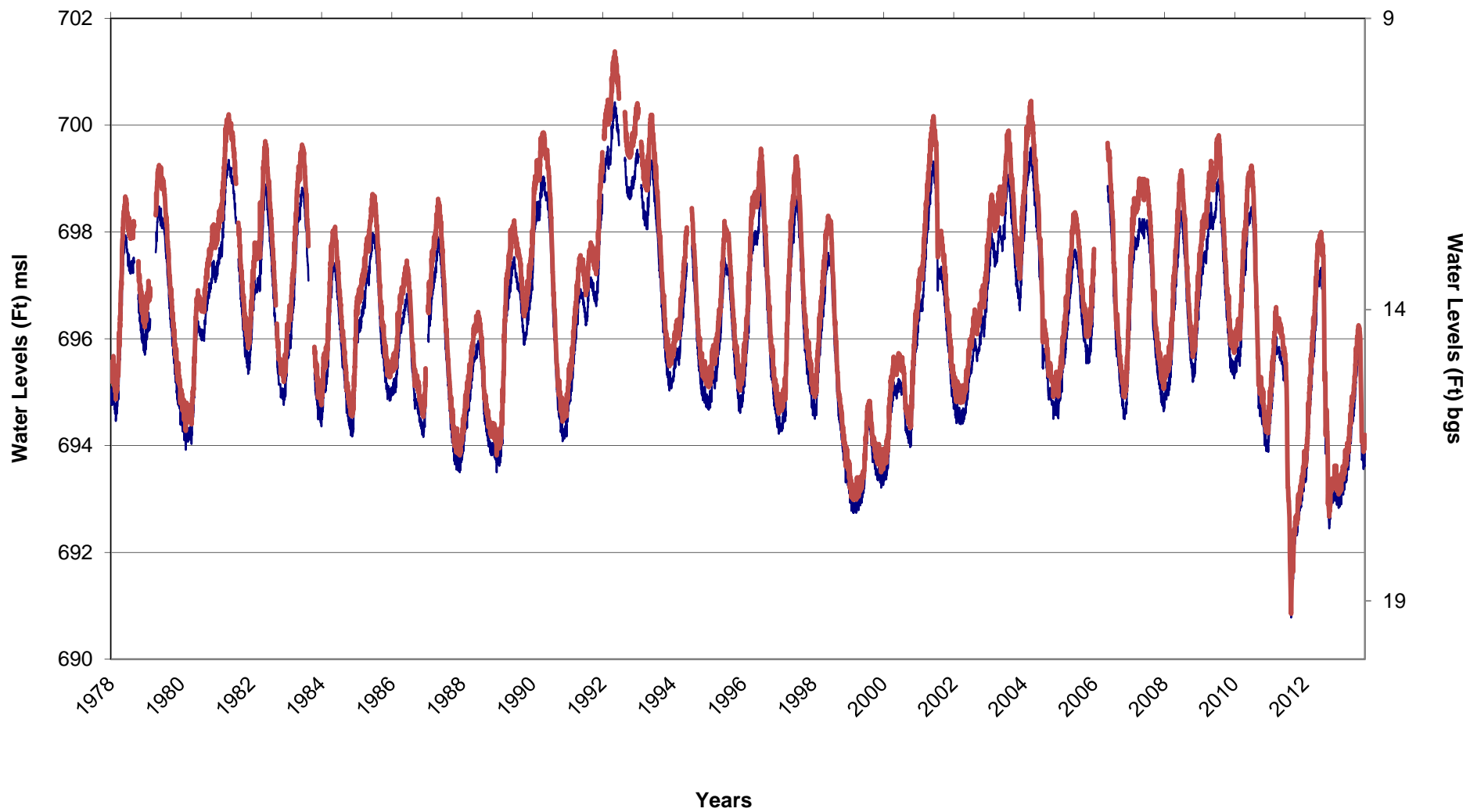
Site Name	National Aquifer Code	Local Aquifer Name	Water Quality Subnetwork	Baseline Achieved	WQ un-stressed	WQ Well Type
Benton 4	N100GLCIAL	112PLSC, Pleistocene Series	Yes	No		
Tippecanoe 17	N100GLCIAL	112OTSH, Outwash	Yes	No		
Tippecanoe 18	N100GLCIAL	112OTSH, Outwash	Yes	No		
Wabash 4	N100GLCIAL	112PLSC, Pleistocene Series	Yes	No		
Grant 10	N100GLCIAL	112PLSC, Pleistocene Series	Yes	No		

Site Name	WQ System Name	Water Level Subnetwork	Baseline Achieved	WL Unstressed	WL Well Type	WL System Name
Benton 4	IN Water Mon. C.	Yes	Yes	Yes	Surveillance	NWIS
Tippecanoe 17	IN Water Mon. C.	Yes	Yes	Yes	Surveillance	NWIS
Tippecanoe 18	IN Water Mon. C.	Yes	Yes	Yes	Surveillance	NWIS
Wabash 4	IN Water Mon. C.	Yes	Yes	No	Trend	NWIS
Grant 10	IN Water Mon. C.	Yes	Yes	No	Trend	NWIS

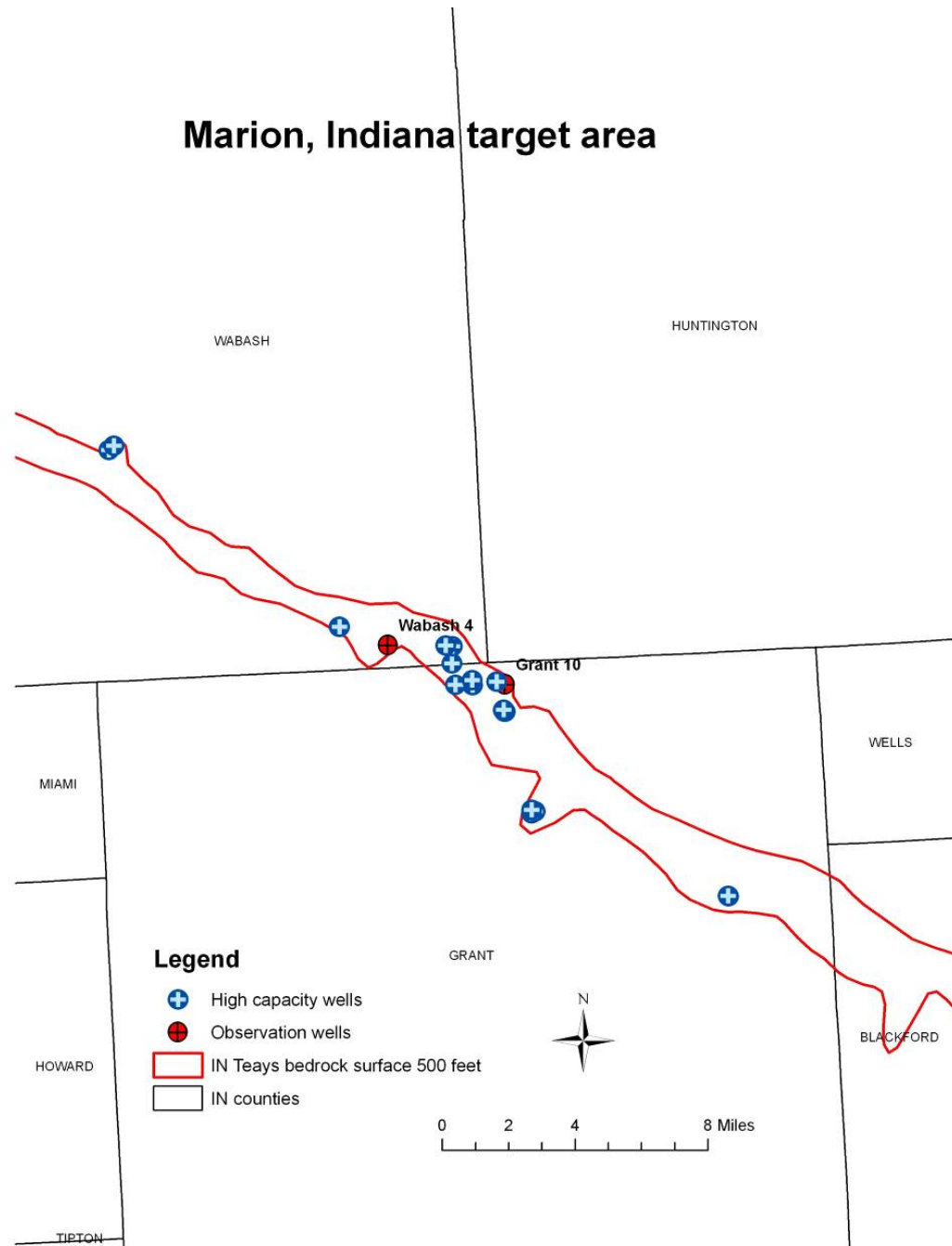
Observation wells Benton 4, Tippecanoe 17, and Tippecanoe 18; and registered high-capacity wells



Benton 4 Daily Water Levels



Marion, Indiana target area

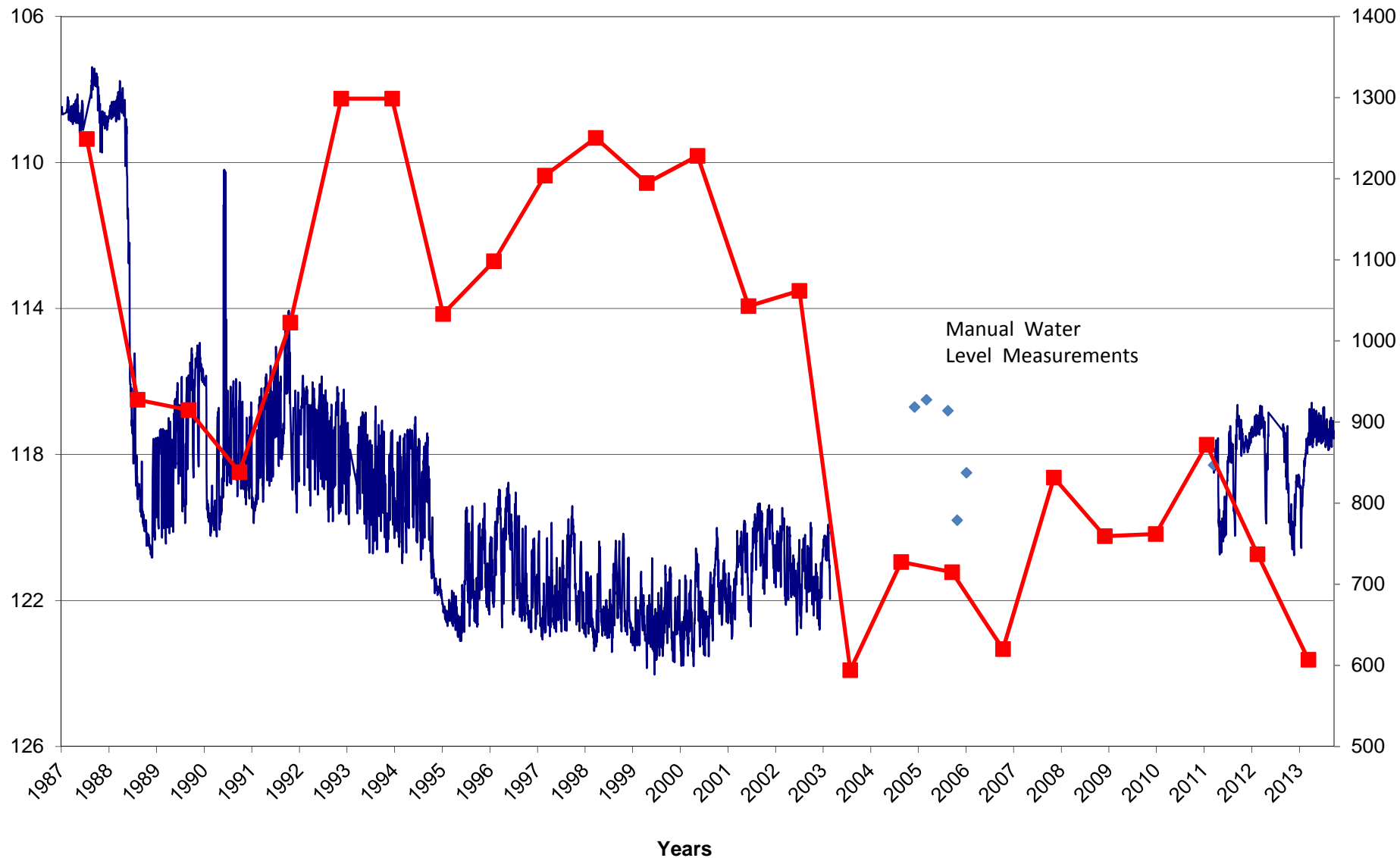


**Grant 10
Observation Well
Water Levels (ft) bgs**

— Grant 10 Daily Water Levels

—■— Yearly Withdrawals

**Annual Withdrawals by
Marion Water-North Well
Field (million gallons)**



**2014 DNR-USGS
Observation
Well Network
35 wells,
18 real-time,
all wells have
continuous
water level
recorders**

